



THE NEWFOUNDLAND AND LABRADOR GAZETTE

PART I

PUBLISHED BY AUTHORITY

Vol. 86 ST. JOHN'S, FRIDAY, APRIL 29, 2011 No. 17

MINERAL ACT

Situate near Noel Pauls Brook, Central NL
On map sheet 12A/09

NOTICE

Published in accordance with section 62 of CNLR 1143/96 under the *Mineral Act*, cM-12, RSNL 1990 as amended.

Mineral License 013978M
Held by Quinlan, Eddie
Situate near Pittmans Pond, Central NL
On map sheet 12H/08 12H/07

Mineral rights to the following mineral lands have reverted to the Crown:

A portion of license 012960M
Held by P. Walsh Jr., Joseph
Situate near Mortier Bay, Burin Peninsula
On map sheet 01M/03
more particularly described in an application on file at Department of Natural Resources

Mineral License 010757M
Held by Corner Brook Pulp and Paper Limited
Situate near Boswarlos, Western NL
On map sheet 12B/10

Mineral License 018297M
Held by French, Victor A.
Situate near Terra Nova North River, Eastern NL
On map sheet 02D/10

Mineral License 010754M
Held by Corner Brook Pulp and Paper Limited
Situate near Rainy Brook, Western NL
On map sheet 12B/02

Mineral License 016394M
Held by Hinchey, Stephen
Situate near Spout Cove, Avalon Peninsula
On map sheet 01N/14

Mineral License 017071M
Held by North Atlantic Iron Corporation
Situate near Churchill River
On map sheet 13F/08

Mineral License 017597M
Held by Mega Uranium Ltd.
Situate near Uivaluk Peak
On map sheet 13I/13 13J/16

Mineral License 011549M
Held by 61716 Newfoundland and Labrador Limited
Situate near Deer Lake, Western NL
On map sheet 12H/04

Mineral License 017599M
Held by Mega Uranium Ltd.
Situate near Jigger Tickle
On map sheet 13I/13 13J/16

Mineral License 011786M
Held by Quest Inc.

Mineral License 017600M
Held by Mega Uranium Ltd.
Situates near Jigger Tickle
On map sheet 13J/16

Mineral License 014484M
Held by Mega Uranium Ltd.
Situates near False Cape
On map sheet 13I/13

Mineral License 017593M
Held by Mega Uranium Ltd.
Situates near Abliuk Bight
On map sheet 13I/11

A portion of license 015887M
Held by Benton Resources Corp.
Situates near Alliger Lake
On map sheet 14E/01
more particularly described in an application on file at Department of Natural Resources

Mineral License 016975M
Held by Lewis, Leonard
Situates near Shirley Lake, Central NL
On map sheet 02E/03

Mineral License 016976M
Held by Lewis, Leonard
Situates near Shirley Lake, Central NL
On map sheet 02E/03

Mineral License 016999M
Held by Crocker, Calvin M.
Situates near Dead Wolf Brook, Central NL
On map sheet 02D/10

Mineral License 017000M
Held by Crocker, Calvin M.
Situates near Dead Wolf Brook, Central NL
On map sheet 02D/10

Mineral License 017002M
Held by Clode Sound Resources Inc
Situates near Tug Pond, Eastern NL
On map sheet 02D/01

A portion of license 017062M
Held by Newfoundland Fluorspar Exploration Ltd.
Situates near St. Lawrence, Burin Peninsula
On map sheet 01L/14
more particularly described in an application on file at Department of Natural Resources

Mineral License 017370M
Held by Altius Resources Inc.
Situates near Micmac Lake Area, Baie Verte Peninsula
On map sheet 12H/09

Mineral License 017392M
Held by Altius Resources Inc.
Situates near Parsons Pond, Great Northern Peninsula
On map sheet 12H/13

A portion of license 017832M
Held by Newfoundland Fluorspar Exploration Ltd.
Situates near St. Lawrence, Burin Peninsula
On map sheet 01L/14
more particularly described in an application on file at Department of Natural Resources

The lands covered by this notice except for the lands within Exempt Mineral Lands, the Exempt Mineral Lands being described in CNLR 1143/96 and NLR 71/98, 104/98, 97/2000, 36/2001, 31/2004, 78/2006, 8/2008 and 28/2009 and outlined on 1:50 000 scale digital maps maintained by the Department of Natural Resources, will be open for staking after the hour of 9:00 a.m. on the 32nd clear day after the date of this publication.

DEPARTMENT OF NATURAL RESOURCES
JIM HINCHEY, P. Geo
Manager - Mineral Rights

File #'s 774:5061, 5359, 6586, 6802, 6837, 7833, 8924, 9203, 9226, 9227, 9229, 9237; 775:0137, 0702, 0703, 0715, 0716, 0718, 0732, 0910, 0937, 1248

Apr 29

CITY OF ST. JOHN'S ACT



**ST. JOHN'S MUNICIPAL COUNCIL
NOTICE
ST. JOHN'S ADOPTION OF 2010
NATIONAL BUILDING CODE BY-LAW**

TAKE NOTICE that the St. John's Municipal Council has enacted the St. John's Adoption of 2010 National Building Code.

The said By-Law was passed by Council on the 18th day of April, 2011 so as to adopt the 2010 National Building Code for the following by-laws: The St. John's Commercial Maintenance By-Law, the St. John's Residential Property Standards By-Law, the St. John's Building By-Law and the St. John's Plumbing By-Law.

All persons are hereby required to take notice that any person who wishes to view such Regulations may view same at the Office of the City Solicitor of the St. John's Municipal Council at City Hall, and that any person who wishes to obtain a copy thereof may obtain it at the said office upon the payment of a reasonable charge as established by the St. John's Municipal Council for such copy.

Dated this 18th day of April, 2011.

CITY OF ST. JOHN'S
Neil Martin - City Clerk

Apr 29

URBAN AND RURAL PLANNING ACT, 2000

**NOTICE OF REGISTRATION
TOWN OF ST. ANTHONY
MUNICIPAL PLAN
AND DEVELOPMENT REGULATIONS**

Take notice that the TOWN OF ST. ANTHONY Municipal Plan and Development Regulations, adopted on the 14th day of December, 2010, and approved on the 25th day of January, 2011, has been registered by the Minister of Municipal Affairs.

The Municipal Plan and Development Regulations come into effect on the day that this notice is published in *The Newfoundland and Labrador Gazette*. Anyone who wishes to inspect a copy of them may do so at the Town Office, in the Town of St. Anthony during normal working hours.

TOWN OF ST. ANTHONY
Karen Hillier, Administrative Assistant

P.O.# 515769

Apr 29

LANDS ACT

**NOTICE OF INTENT
Lands Act c36, SNL 1991**

NOTICE is hereby given that ALBERT MEADUS of St. John's, intends to apply to the Department of Environment and Conservation, two months from the publication of this notice, to acquire title, pursuant to section 7(2)(e) of the said Act, to that piece of Crown Land situated within fifteen (15) metres of the waters of Ocean Pond in the Electoral District of Harbour Main-Whitbourne for the purpose of a boathouse and wharf and being more particularly described as follows:

*Bounded on the North by Crown Land
for a distance of 15 m;
Bounded on the East by Land granted to A. Meadus
for a distance of 40 m;
Bounded on the South by Crown Land
for a distance of 20 m;
Bounded on the West by Ocean Pond
for a distance of 26 m;
and containing an area of
approximately 400 square metres.*

Any person wishing to object to the application must file the objection in writing, within one month from the publication of this notice, with reasons for it, to the Minister of Environment and Conservation and mail to the nearest Regional Lands Office:

c/o Eastern Regional Lands Office, P.O. Box 8700, 5 Mews Place, St. John's, NL, A1B 4J6.

c/o Central Regional Lands Office, P.O. Box 2222, 230 Airport Boulevard, Fraser Mall, Gander, NL, A1V 2N9

c/o Western Regional Lands Office, P.O. Box 2006, 1 Riverside Drive, Noton Building, Corner Brook, NL, A2H 6J8

c/o Labrador Regional Lands Office, P.O. Box 3014, Station "B", Happy Valley-Goose Bay, NL, A0P 1E0

For further information on the proposed application, please contact: ALBERT MEADUS at (709) 753-5886

Apr 29

**NOTICE OF INTENT
Lands Act c36, SNL 1991**

NOTICE is hereby given that MICHELLE WHALEN of St. John's, intends to apply to the Department of Environment and Conservation, two months from the publication of this notice, to acquire title, pursuant to section 7(2) (e) of the said Act, to that piece of Crown Land situated within fifteen (15) metres of the waters of Bobby's Cove in the Electoral District of The Straits - White Bay North for the purpose of installing a slipway and being more particularly described as follows:

*Bounded on the North by Old St. Anthony
Bight Access Road
for a distance of 15 m;
Bounded on the East by property of Allan Pilgrim
for a distance of 10 m;
Bounded on the South by Bobby's Cove
for a distance of 15 m;
Bounded on the West by property of Reuben Simms
for a distance of 10 m;
and containing an area of
approximately 9000 square metres.*

Any person wishing to object to the application must file the objection in writing, within one month from the publication of this notice, with reasons for it, to the Minister of Environment and Conservation and mail to the nearest Regional Lands Office:

c/o Eastern Regional Lands Office, P.O. Box 8700, 5 Mews Place, St. John's, NL, A1B 4J6.

c/o Central Regional Lands Office, P.O. Box 2222, 230 Airport Boulevard, Fraser Mall, Gander, NL, A1V 2N9

c/o Western Regional Lands Office, P.O. Box 2006, 1 Riverside Drive, Noton Building, Corner Brook, NL, A2H 6J8

c/o Labrador Regional Lands Office, P.O. Box 3014, Station "B", Happy Valley-Goose Bay, NL, A0P 1E0

For further information on the proposed application, please contact: KENNETH WILLIAMS at (709) 747-9111.

Apr 29

QUIETING OF TITLES ACT

**2011 01G 3059
IN THE SUPREME COURT OF
NEWFOUNDLAND AND LABRADOR
TRIAL DIVISION (GENERAL)**

IN THE MATTER OF the *Quieting of Titles Act*, RSNL, 1990, cQ-3, as amended.

AND

IN THE MATTER OF a piece or parcel of land situate and being at or on Perrins Road, Conception Bay South, in the Province of Newfoundland and Labrador;

AND

IN THE MATTER OF an Application of RICHARD BUTLER of Ottawa, in the Province of Ontario.

NOTICE is hereby given to all parties that RICHARD BUTLER, has applied to the Supreme Court of Newfoundland and Labrador, Trial Division to have the title to all that piece or parcel of land more particularly described in schedule "A" annexed hereto, investigated for declaration that the said RICHARD BUTLER is the absolute owner thereof.

All persons having title adverse to the said title claimed by the RICHARD BUTLER shall file at the Registry of the Supreme Court of Newfoundland and Labrador, Trial Division, (General), particulars of such adverse claim and serve the same together, with an Affidavit certifying the same to the undersigned, Solicitors for the Applicants, on or before the 23rd day of May, 2011, after which date no party having any claim shall be permitted to file the same or to be heard except by leave of the Court and subject to such conditions as the Court may deem just.

All such adverse claims shall then be investigated in such manner as the Court may direct.

DATED AT the City of St. John's, in the Province of Newfoundland and Labrador, this 15th day of April, 2011.

CURTIS, DAWE
Solicitors for the Applicant
PER: Michael S. Ladha

ADDRESS FOR SERVICE:
P.O. Box 337
St. John's, NL A1C 5J9
Tel: (709) 722-5181
Fax:(709) 722-7521

SCHEDULE "A"

Richard Butler,
Perrins Road, Long Pond

All that piece or parcel of land situate and being on the southern side of Perrin's Road at Long Pond, in the Electoral District of Topsail, Newfoundland and Labrador, Canada and being abutted as follows, that is to say:

BEGINNING at a point, said point having NAD 83 coordinates of North 5263781.467 meters and East 307120.820 meters with reference to Crown Land Monument No. 83G 3220 having coordinates of North 5263816.573 meters and East 306426.331 meters and Crown Land Monument No. 83G 3248 having coordinates of North 5263383.148 meters and East 305938.551 meters of the Modified Three Degree Transverse Mercator Projection for Newfoundland and Labrador having a central Meridian of 53 degrees west longitude;

THENCE running along by Perrins Road South seventy-seven degrees sixteen minutes fourteen seconds East, fifteen decimal zero seven seven meters;

THENCE running south seventy-two degrees fifty-two minutes twenty-six seconds East, eleven decimal seven nine four meters;

THENCE running along by land belonging to Robert Francis Evans registered in roll 45 Frame 2534 of the Registry of Deeds in Newfoundland and Labrador, and;

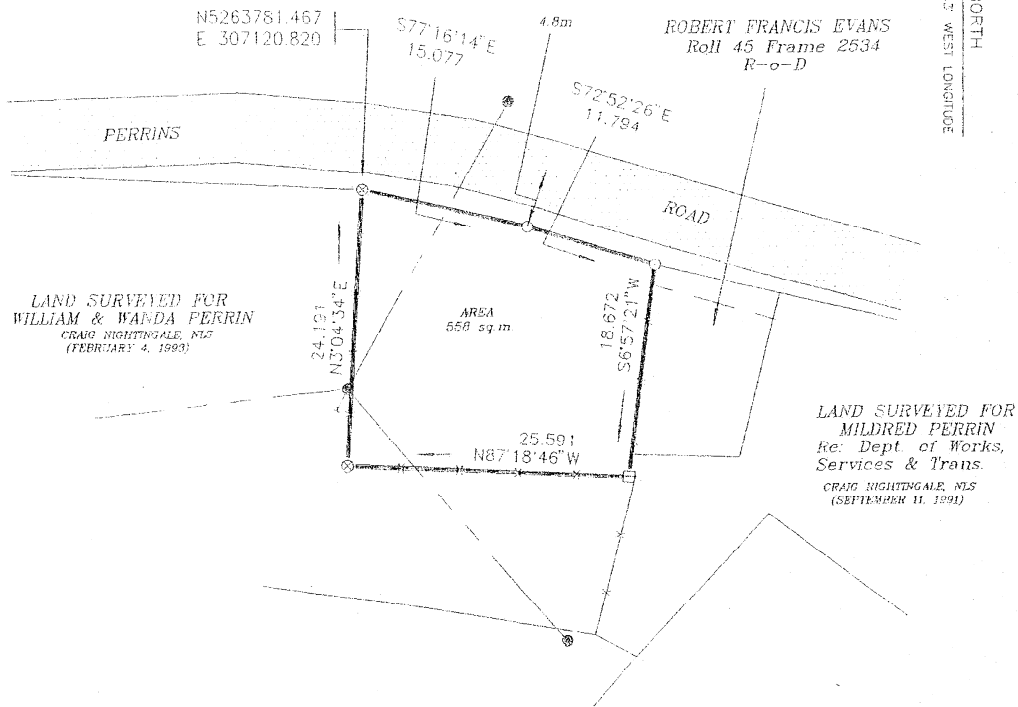
THENCE by land surveyed for Mildred Perrin by Craig Nightingale, NLS (September 11, 1991) South six degrees fifty-seven minutes twenty-one seconds West, eighteen decimal six seven two meters;

THENCE. Running by land belonging to William and Wanda Perrin surveyed by Craig Nightingale, NLS (February 4,1993) North eighty-seven degrees eighteen minutes forty-six seconds West, twenty-five decimal five nine one meters;

THENCE running North three degrees zero four minutes thirty-four seconds East, twenty-four decimal one nine one meters, more or less, to the point of beginning.

The above described parcel of land has an area of 558 square meters, more or less.; and is shown more fully delineated on the adjoining plan having Job No. 319297 dated March 21, 1997. The only visible sign of encroachment on the parcel of land are some utility lines as shown on the adjoining plan. All the bearings are referred to Grid North of the above mentioned projection. All distances are grid distances using a scale of 0.999398.

GRID NORTH
 ONE 1 C.M. 33 WEST LONGITUDE



NOTES

COORDINATES BASED ON NAD83.
 SCALE FACTOR USED IS 0.999898
 ALL DISTANCES ARE GRID DISTANCES AND IN METERS.

THIS PLAN CERTIFIES THE INFORMATION SHOWN AS OF MARCH 19, 1997 AND ONLY AS OF THAT DATE.

THIS PLAN AND THE ACCOMPANYING DESCRIPTION OF CRAIG NIGHTINGALE SURVEYS LIMITED FORM AN INTEGRAL PART OF THE WHOLE AND ARE NOT SEPARABLE.

© CRAIG NIGHTINGALE, NEWFOUNDLAND LAND SURVEYOR, 1997. UNAUTHORIZED USE, ALTERATION OR REPRODUCTION OF THIS SURVEY PLAN AND DESCRIPTION IS PROHIBITED BY LAW AS OUTLINED IN THE COPYRIGHT ACT. HOWEVER, USE AND REPRODUCTION THEREOF BY OR ON BEHALF OF THE PERSON TO WHOM THIS SURVEY IS CERTIFIED IS PERMITTED, PROVIDED THAT NO ALTERATIONS WHATSOEVER ARE MADE THERE TO.

LEGEND

- PROPERTY DEALT WITH
- FENCE LINES
- POWER/TELEPHONE LINES
- EASEMENTS
- GUY WIRE
- CONTROL MONUMENT
- PLACED IRON PIN
- FOUND IRON PIN
- POLE OR LIGHT STANDARD
- WELL
- FIRE HYDRANT
- CHAIN LINK FENCE POST

REFERENCE CONTROL USED

Description	C.L. Mon. 83G 3220	C.L. Mon. 83G 324
Northing	5263816.573	5263383.148
Eastng	306426.331	305938.551



CRAIG NIGHTINGALE SURVEYS LIMITED
 NEWFOUNDLAND LAND SURVEYOR
 TOPSAIL, NEWFOUNDLAND

TRUSTEE ACT

ESTATE NOTICE

IN THE MATTER of the Estate of EGBERT RANDELL,
late of the City of Corner Brook in the Province of
Newfoundland and Labrador, Retired Retail Clerk,
deceased.

All persons claiming to be creditors of or who have any
claims or demands upon or affecting the Estate of
EGBERT RANDELL, late of City of Corner Brook, in the
Province of Newfoundland and Labrador, deceased, are
hereby requested to send particulars of the same in writing,
duly attested to the undersigned Solicitors for the Executor
of the Estate on or before the 13th day of May, 2011, after
which date the said Executor will proceed to distribute the
said Estate having regard only to the claims of which he
shall then have had notice.

DATED at Corner Brook, Newfoundland and Labrador,
this 18th day of April, 2011.

POOLE ALTHOUSE
Solicitors for the Executor
PER: J. Annette Bennett

ADDRESS FOR SERVICE
P.O. Box 812
49-51 Park Street
Corner Brook, NL A2H 6H7
Tel: (709) 634-3136
Fax: (709) 634-8247

Apr 29



THE NEWFOUNDLAND AND LABRADOR GAZETTE

PART II

SUBORDINATE LEGISLATION FILED UNDER THE STATUTES AND SUBORDINATE LEGISLATION ACT

Vol. 86

ST. JOHN'S, FRIDAY, APRIL 29, 2011

No. 17

NEWFOUNDLAND AND LABRADOR

REGULATION

NLR 42/11



**NEWFOUNDLAND AND LABRADOR
REGULATION 42/11**

*Notice of Protected Water Supply Area of Clam Pond Fox Hill
Reservoir, WS-S-0448, Town of Marystown
under the
Water Resources Act*

(Filed April 26, 2011)

Under the authority of section 39 of the *Water Resources Act*, I designate the area generally known as the *Clam Pond Fox Hill Reservoir Water Supply Area* for the Town of Marystown as a protected water supply area.

Dated at St. John's, March 17, 2011.

Ross Wiseman
Minister of Environment and Conservation

NOTICE

This area includes all lands in the Provincial Electoral District of Burin-Placentia West abutted and bounded as follows:

Beginning at a point having scaled UTM coordinates of easting 640 795 metres and northing 5 228 544 metres;

Then running in a southwesterly direction for a distance of 561 metres, more or less, to a point having scaled UTM coordinates of easting 640 393 metres and northing 5 228 152 metres;

Then running in a westerly direction for a distance of 240 metres, more or less, to a point having scaled UTM coordinates of easting 640 155 metres and northing 5 228 179 metres;

Then running in a northerly direction for a distance of 155 metres, more or less, to a point having scaled UTM coordinates of easting 640 102 metres and northing 5 228 324 metres;

Then running in a westerly direction for a distance of 151 metres, more or less, to a point having scaled UTM coordinates of easting 639 954 metres and northing 5 228 353 metres;

Then running in a southwesterly direction for a distance of 101 metres, more or less, to a point having scaled UTM coordinates of easting 639 864 metres and northing 5 228 308 metres;

Then running in a northwesterly direction for a distance of 101 metres, more or less, to a point having scaled UTM coordinates of easting 639 779 metres and northing 5 228 364 metres;

Then running in a northerly direction for a distance of 558 metres, more or less, to a point having scaled UTM coordinates of easting 639 911 metres and northing 5 228 906 metres;

Then running in a northwesterly direction for a distance of 102 metres, more or less, to a point having scaled UTM coordinates of easting 639 832 metres and northing 5 228 970 metres;

Then running in a southwesterly direction for a distance of 155 metres, more or less, to a point having scaled UTM coordinates of easting 639 697 metres and northing 5 228 893 metres;

Then running in a northwesterly direction for a distance of 89 metres, more or less, to a point having scaled UTM coordinates of easting 639 618 metres and northing 5 228 933 metres;

Then running in a northerly direction for a distance of 127 metres, more or less, to a point having scaled UTM coordinates of easting 639 573 metres and northing 5 229 052 metres;

Then running in a northerly direction for a distance of 137 metres, more or less, to a point having scaled UTM coordinates of easting 639 607 metres and northing 5 229 184 metres;

Then running in a northwesterly direction for a distance of 212 metres, more or less, to a point having scaled UTM coordinates of easting 639 448 metres and northing 5 229 324 metres;

Then running in a northerly direction for a distance of 743 metres, more or less, to a point having scaled UTM coordinates of easting 639 181 metres and northing 5 230 018 metres;

Then running in a northerly direction for a distance of 388 metres, more or less, to a point having scaled UTM coordinates of easting 639 094 metres and northing 5 230 396 metres;

Then running in a northwesterly direction for a distance of 409 metres, more or less, to a point having scaled UTM coordinates of easting 638 766 metres and northing 5 230 639 metres;

Then running in a northwesterly direction for a distance of 1171 metres, more or less, to a point having scaled UTM coordinates of easting 637 969 metres and northing 5 231 498 metres;

Then running in a westerly direction for a distance of 320 metres, more or less, to a point having scaled UTM coordinates of easting 637 670 metres and northing 5 231 611 metres;

Then running in a northerly direction for a distance of 301 metres, more or less, to a point having scaled UTM coordinates of easting 637 705 metres and northing 5 231 909 metres;

Then running in a northerly direction for a distance of 887 metres, more or less, to a point having scaled UTM coordinates of easting 637 890 metres and northing 5 232 777 metres;

Then running in a northeasterly direction for a distance of 531 metres, more or less, to a point having scaled UTM coordinates of easting 638 173 metres and northing 5 233 227 metres;

Then running in a easterly direction for a distance of 187 metres, more or less, to a point having scaled UTM coordinates of easting 638 350 metres and northing 5 233 169 metres;

Then running in a easterly direction for a distance of 183 metres, more or less, to a point having scaled UTM coordinates of easting 638 533 metres and northing 5 233 174 metres;

Then running in a northeasterly direction for a distance of 125 metres, more or less, to a point having scaled UTM coordinates of easting 638 617 metres and northing 5 233 267 metres;

Then running in a northeasterly direction for a distance of 167 metres, more or less, to a point having scaled UTM coordinates of easting 638 768 metres and northing 5 233 338 metres;

Then running in a easterly direction for a distance of 631 metres, more or less, to a point having scaled UTM coordinates of easting 639 390 metres and northing 5 233 444 metres;

Then running in a easterly direction for a distance of 700 metres, more or less, to a point having scaled UTM coordinates of easting 640 078 metres and northing 5 233 314 metres;

Then running in a easterly direction for a distance of 312 metres, more or less, to a point having scaled UTM coordinates of easting 640 390 metres and northing 5 233 325 metres;

Then running in a northeasterly direction for a distance of 261 metres, more or less, to a point having scaled UTM coordinates of easting 640 612 metres and northing 5 233 463 metres;

Then running in a southeasterly direction for a distance of 287 metres, more or less, to a point having scaled UTM coordinates of easting 640 858 metres and northing 5 233 314 metres;

Then running in a northeasterly direction for a distance of 241 metres, more or less, to a point having scaled UTM coordinates of easting 641 068 metres and northing 5 233 433 metres;

Then running in a southeasterly direction for a distance of 293 metres, more or less, to a point having scaled UTM coordinates of easting 641 303 metres and northing 5 233 259 metres;

Then running in a easterly direction for a distance of 1059 metres, more or less, to a point having scaled UTM coordinates of easting 642 353 metres and northing 5 233 127 metres;

Then running in a southerly direction for a distance of 332 metres, more or less, to a point having scaled UTM coordinates of easting 642 420 metres and northing 5 232 801 metres;

Then running in a easterly direction for a distance of 637 metres, more or less, to a point having scaled UTM coordinates of easting 643 052 metres and northing 5 232 727 metres;

Then running in a southeasterly direction for a distance of 174 metres, more or less, to a point having scaled UTM coordinates of easting 643 208 metres and northing 5 232 650 metres;

Then running in a southeasterly direction for a distance of 206 metres, more or less, to a point having scaled UTM coordinates of easting 643 332 metres and northing 5 232 486 metres;

Then running in a southwesterly direction for a distance of 405 metres, more or less, to a point having scaled UTM coordinates of easting 643 092 metres and northing 5 232 161 metres;

Then running in a southerly direction for a distance of 268 metres, more or less, to a point having scaled UTM coordinates of easting 643 147 metres and northing 5 231 899 metres;

Then running in a southwesterly direction for a distance of 294 metres, more or less, to a point having scaled UTM coordinates of easting 642 949 metres and northing 5 231 682 metres;

Then running in a southerly direction for a distance of 364 metres, more or less, to a point having scaled UTM coordinates of easting 642 893 metres and northing 5 231 322 metres;

Then running in a southeasterly direction for a distance of 179 metres, more or less, to a point having scaled UTM coordinates of easting 643 049 metres and northing 5 231 235 metres;

Then running in a southerly direction for a distance of 251 metres, more or less, to a point having scaled UTM coordinates of easting 643 055 metres and northing 5 230 983 metres;

Then running in a southwesterly direction for a distance of 264 metres, more or less, to a point having scaled UTM coordinates of easting 642 875 metres and northing 5 230 790 metres;

Then running in a southwesterly direction for a distance of 201 metres, more or less, to a point having scaled UTM coordinates of easting 642 692 metres and northing 5 230 706 metres;

Then running in a northwesterly direction for a distance of 167 metres, more or less, to a point having scaled UTM coordinates of easting 642 584 metres and northing 5 230 833 metres;

Then running in a westerly direction for a distance of 207 metres, more or less, to a point having scaled UTM coordinates of easting 642 377 metres and northing 5 230 841 metres;

Then running in a southwesterly direction for a distance of 262 metres, more or less, to a point having scaled UTM coordinates of easting 642 171 metres and northing 5 230 679 metres;

Then running in a westerly direction for a distance of 222 metres, more or less, to a point having scaled UTM coordinates of easting 641 957 metres and northing 5 230 621 metres;

Then running in a westerly direction for a distance of 561 metres, more or less, to a point having scaled UTM coordinates of easting 641 406 metres and northing 5 230 729 metres;

Then running in a westerly direction for a distance of 222 metres, more or less, to a point having scaled UTM coordinates of easting 641 189 metres and northing 5 230 682 metres;

Then running in a westerly direction for a distance of 402 metres, more or less, to a point having scaled UTM coordinates of easting 640 803 metres and northing 5 230 793 metres;

Then running in a southwesterly direction for a distance of 178 metres, more or less, to a point having scaled UTM coordinates of easting 640 657 metres and northing 5 230 690 metres;

Then running in a southerly direction for a distance of 92 metres, more or less, to a point having scaled UTM coordinates of easting 640 687 metres and northing 5 230 602 metres;

Then running in a westerly direction for a distance of 200 metres, more or less, to a point having scaled UTM coordinates of easting 640 493 metres and northing 5 230 549 metres;

Then running in a southwesterly direction for a distance of 495 metres, more or less, to a point having scaled UTM coordinates of easting 640 266 metres and northing 5 230 110 metres;

Then running in a southerly direction for a distance of 255 metres, more or less, to a point having scaled UTM coordinates of easting 640 208 metres and northing 5 229 862 metres;

Then running in a southerly direction for a distance of 416 metres, more or less, to a point having scaled UTM coordinates of easting 640 221 metres and northing 5 229 446 metres;

Then running in a southeasterly direction for a distance of 380 metres, more or less, to a point having scaled UTM coordinates of easting 640 525 metres and northing 5 229 219 metres;

Then running in a southerly direction for a distance of 139 metres, more or less, to a point having scaled UTM coordinates of easting 640 544 metres and northing 5 229 081 metres;

Then running in a southwesterly direction for a distance of 197 metres, more or less, to a point having scaled UTM coordinates of easting 640 448 metres and northing 5 228 909 metres;

Then running in a easterly direction for a distance of 244 metres, more or less, to a point having scaled UTM coordinates of easting 640 692 metres and northing 5 228 896 metres;

Then running in a southerly direction for a distance of 367 metres, more or less, to the point of commencement.

All coordinates refer Zone 21 of the NAD 83 Universal Transverse Mercator Projection.

The Notice of Protected Water Supply Area of Linton Lake, Consolidated Newfoundland and Labrador Regulation 622/96, is repealed.

©William E. Parsons, Queen's Printer

Index

PART I

City of St. John's Act– Notice	152
Mineral Act– Notice	151
Lands Act– Notices.....	153
Quieting of Titles Act– Notice.....	154
Trustee Act– Notice	156
Urban and Rural Planning Act, 2000 – Notice.....	153

PART II

CONTINUING INDEX OF SUBORDINATE LEGISLATION

Title of Act and Subordinate Legislation made thereunder	CNLR or NL Reg.	Amendment	NL Gazette Date & Page No.
Water Resources Act			
Notice of Protected Water Supply Area of Clam Pond Fox Hill Reservoir, WS-S-0448, Town of Marystown	NLR 42/11	New & Repeals CNLR 622/96	Apr 29/11 p. 169

The Newfoundland and Labrador Gazette is published from the office of William E. Parsons, Queen's Printer.

Copy for publication must be received before **Friday, 4:30 p.m.**, seven days before publication, to ensure inclusion in next issue.

Advertisements should be typewritten or printed legibly, separate from covering letter. Number of insertions required must be stated and the names of all signing officers typewritten or printed.

Copy may be mailed to the address below, faxed to (709) 729-1900 or emailed to queensprinter@gov.nl.ca.

Advertising rates are available upon request. Subscription rate for *The Newfoundland and Labrador Gazette* is \$125.00 for 52 weeks plus applicable tax (\$131.25). Weekly issues of \$3.00 per copy, plus tax payable in advance.

All cheques, money orders, etc., should be made payable to THE NEWFOUNDLAND EXCHEQUER ACCOUNT and all correspondence should be addressed to: Office of the Queen's Printer, P. O. Box 8700, Ground Floor, East Block, Confederation Building, St. John's, NL A1B 4J6. Telephone (709) 729-3649. Fax: (709) 729-1900.

Web Site: <http://www.gs.gov.nl.ca/printer/index.html>

**Place your order by contacting:
Office of The Queen's Printer
Confederation Building, East Block
St. John's, NL A1B 4J6
Telephone: (709) 729-3649 Fax: (709) 729-1900
email: queensprinter@gov.nl.ca**

**Government Information Product
Publication Rate Mail
G.S.T. # R107442683**

All requests for Subscription and Legislation MUST be prepaid.