



THE NEWFOUNDLAND AND LABRADOR GAZETTE

PART I

PUBLISHED BY AUTHORITY

Vol. 89 ST. JOHN'S, FRIDAY, APRIL 11, 2014 No. 15

MINERAL ACT

NOTICE

Published in accordance with section 62 of CNLR 1143/96 under the *Mineral Act*, RSNL 1990 cM-12, as amended.

Mineral rights to the following mineral licenses have reverted to the Crown:

Mineral License 000674M
Held by New Dimension Resources Ltd.
Situates near Kogluktokoluk Brook
On map sheet 14D/08

Mineral License 020883M
Held by Cornerstone Resources Inc.
Situates near Southwest Gander River, Central NL
On map sheet 02D/11

A portion of license 020920M
Held by Kelloway, Keith
Situates near Burin, Burin Peninsula
On map sheet 01M/03
more particularly described in an application on file at Department of Natural Resources.

Mineral License 008276M
Held by Black Bart Prospecting Inc.
Situates near Glenwood, Central NL
On map sheet 02D/15

Mineral License 010551M
Held by 7980736 Canada Inc.
Situates near Buchans Lake, Central NL
On map sheet 12A/15

Mineral License 019573M
Held by Celtic Minerals Ltd
Situates near Trout Pond
On map sheet 14D/08

Mineral License 009883M
Held by Celtic Minerals Ltd
Situates near Trout Pond
On map sheet 14D/08

Mineral License 009898M
Held by Keats, Kevin D.
Situates near Valentine Lake, Central NL
On map sheet 12A/06

Mineral License 009917M
Held by Noel, Nathaniel
Situates near Great Gull River, Central NL
On map sheet 02D/11

Mineral License 010212M
Held by Prominex Resource Corp.
Situates near Tulks Hill, Central NL
On map sheet 12A/11, 12A/06

Mineral License 010236M
Held by Rambler Metals and Mining Canada Limited

THE NEWFOUNDLAND AND LABRADOR GAZETTE
April 11, 2014

Situate near On map sheet	Gull Pond, Baie Verte Peninsula 12H/16	On map sheet more particularly described in an application on file at Department of Natural Resources.	01L/14
Mineral License Held by Situate near On map sheet	010237M Dimmell, Peter Rambler, Baie Verte Penninsula 12H/16	A portion of license Held by Situate near On map sheet more particularly described in an application on file at Department of Natural Resources.	019378M Sokoman Iron Corp. Little St Lawrence, Burin Peninsula 01L/14, 01L/13
Mineral License Held by Situate near On map sheet	010349M Mega Uranium Ltd. West Micmac Lake 13K/09E	Mineral License Held by Situate near On map sheet	019154M Tawsho Mining Inc. Gull Pond Area, Central NL 12H/09
Mineral License Held by Situate near On map sheet	010367M Jet Metal Corp. Otter Lake 13K/03	Mineral License Held by Situate near On map sheet	020561M Zagrodnik, Michael Adam Middle Ridge, Burin Peninsula 01L/13, 01M/04
Mineral License Held by Situate near On map sheet	011376M Deep Sea Capital Limited Otter Lake 13K/03 13K/02	Mineral License Held by Situate near On map sheet	014236M Penney, Pearce Port Hope Simpson 13A/09
Mineral License Held by Situate near On map sheet	011454M Budden, Andy Dildo Run, Central NL 02E/10	Mineral License Held by Situate near On map sheet	014242M B&A Minerals Ltd. Port Hope Simpson 13A/09
A portion of license Held by Situate near On map sheet more particularly described in an application on file at Department of Natural Resources.	020928M Quinlan, Roland Northwest Gander River, Central NL 02D/05	Mineral License Held by Situate near On map sheet	017103M Tawsho Mining Inc. Winterhouse Cove, Baie Verte Peninsula 12H/09
A portion of license Held by Situate near On map sheet more particularly described in an application on file at Department of Natural Resources.	011799M 7980736 Canada Inc. Buchans, Central NL 12A/15	A portion of license Held by Situate near On map sheet more particularly described in an application on file at Department of Natural Resources.	022019M Alterra Resources Inc. St Lewis Inlet 13A/08
Mineral License Held by Situate near On map sheet	012695M Champion Iron Mines Limited Great Gull Pond, Central NL 12H/01	A portion of license Held by Situate near On map sheet more particularly described in an application on file at Department of Natural Resources.	015153M Alterra Resources Inc. St Lewis Inlet 13A/08
Mineral License Held by Situate near On map sheet	016786M Messina Minerals Inc. Red Indian Lake, Central NL 12A/10, 12A/15	A portion of license Held by Situate near On map sheet more particularly described in an application on file at Department of Natural Resources.	018046M Sweetapple, Walter Alexander Bay, Eastern NL 02D/09
Mineral License Held by Situate near On map sheet	012704M Hicks, Darrin Lawn, Burin Peninsula 01L/13	Mineral License Held by Situate near On map sheet	015751M Sceviour, John Southwest Gander River, Central NL 02D/11
Mineral License Held by Situate near On map sheet	012875M Merrex Gold Inc. Winterland, Burin Peninsula 01M/03	Mineral License Held by Situate near On map sheet	020681M Eagleridge International Limited Port Hope Simpson 13A/09
Mineral License Held by Situate near On map sheet	012892M Manitor Minerals Inc. Davis Pond, Central NL 02E/12	Mineral License Held by	015765M Eagleridge International Limited
A portion of license Held by Situate near	020098M Sokoman Iron Corp. Little St Lawrence, Burin Peninsula		

THE NEWFOUNDLAND AND LABRADOR GAZETTE
April 11, 2014

Situate near On map sheet	Port Hope Simpson 13A/09	Situate near On map sheet	Little Barachois Brook, Western NL 12A/05, 12B/08
Mineral License Held by Situate near On map sheet	015826M Kelloway, Keith Mortier, Burin Peninsula 01M/03	Mineral License Held by Situate near On map sheet	016925M Alterra Resources Inc. Alexis River 13A/09, 13A/10
Mineral License Held by Situate near On map sheet	015827M Sweetapple, Ronald Bloody Reach, Eastern NL 02C/13	Mineral License Held by Situate near On map sheet	019465M Alterra Resources Inc. Alexis River 13A/10, 13A/11, 13A/14
Mineral License Held by Situate near On map sheet	015828M Sweetapple, Walter Bloody Reach, Eastern NL 02C/13	Mineral License Held by Situate near On map sheet	016932M Alterra Resources Inc. Alexis River 13A/10, 13A/11
Mineral License Held by Situate near On map sheet	015829M Sweetapple, Walter Bloody Reach, Eastern NL 02C/13	Mineral License Held by Situate near On map sheet	016936M Alterra Resources Inc. Alexis River 13A/10
Mineral License Held by Situate near On map sheet	016591M Rare Earth Metals Inc. Letitia Lake 13L/01, 13L/08	A portion of license Held by Situate near On map sheet	016937M Alterra Resources Inc. St Lewis Inlet 03D/05, 13A/08 more particularly described in an application on file at Department of Natural Resources
Mineral License Held by Situate near On map sheet	016604M Day, Robin Isabella Falls 13E/15, 13L/02	Mineral License Held by Situate near On map sheet	016945M Alterra Resources Inc. Alexis River 13A/10
Mineral License Held by Situate near On map sheet	016622M Malhi, Kal Bunyans Cove, Eastern NL 02C/05	A portion of license Held by Situate near On map sheet	017303M Quinlan, Roland Red Indian Lake, Central NL 12A/10 more particularly described in an application on file at Department of Natural Resources
Mineral License Held by Situate near On map sheet	016662M Day, Robin Isabella Falls 13L/02	A portion of license Held by Situate near On map sheet	017328M Quinlan, Andrew Victoria Lake, Central NL 12A/06 more particularly described in an application on file at Department of Natural Resources
Mineral License Held by Situate near On map sheet	016673M Pike, Lloyd Bunyans Cove, Eastern NL 02C/05	A portion of license Held by Situate near On map sheet	017329M Quinlan, Andrew Victoria Lake, Central NL 12A/06 more particularly described in an application on file at Department of Natural Resources
Mineral License Held by Situate near On map sheet	016720M Quinlan, Andrew Rocky Ridge Pond Area, Central NL 12A/04	A portion of license Held by Situate near On map sheet	017329M Quinlan, Andrew Victoria Lake, Central NL 12A/06 more particularly described in an application on file at Department of Natural Resources
Mineral License Held by Situate near On map sheet	016732M Alterra Resources Inc. Alexis River 13A/10, 13A/11	A portion of license Held by Situate near On map sheet	021750M Quinlan, Marilyn Brinks Pond, Central NL 02E/02 more particularly described in an application on file at Department of Natural Resources
Mineral License Held by Situate near On map sheet	019619M Buchans Minerals Corporation Battle Pond, Central NL 12A/05, 12A/12	A portion of license Held by Situate near On map sheet	017997M Alterra Resources Inc. St Lewis Inlet 03D/05, 13A/08 more particularly described in an application on file at Department of Natural Resources
Mineral License Held by	020703M Buchans Minerals Corporation		

THE NEWFOUNDLAND AND LABRADOR GAZETTE

April 11, 2014

Mineral License Held by Situates near On map sheet	018026M Triassic Properties Ltd Rambler, Baie Verte Peninsula 12H/16	Held by Situates near On map sheet	Pinsent Jr, Nehemiah Paradise River 13H/04
Mineral License Held by Situates near On map sheet	020577M Triassic Properties Ltd Rambler, Baie Verte Peninsula 12H/16	Mineral License Held by Situates near On map sheet	018137M Great Western Minerals Group Ltd. Hamilton River Area 13C/13
Mineral License Held by Situates near On map sheet	018029M Unity Resources Inc. Gull Pond, Baie Verte Peninsula 02E/13, 12H/16	Mineral License Held by Situates near On map sheet	018138M Great Western Minerals Group Ltd. Hamilton River Area 13F/03
Mineral License Held by Situates near On map sheet	018032M Unity Resources Inc. Gull Pond, Baie Verte Peninsula 02E/13	Mineral License Held by Situates near On map sheet	018139M Great Western Minerals Group Ltd. Hamilton River Area 13F/03
Mineral License Held by Situates near On map sheet	018033M Unity Resources Inc. Gull Pond, Baie Verte Peninsula 02E/13	Mineral License Held by Situates near On map sheet	018140M Great Western Minerals Group Ltd. Hamilton River Area 13F/02, 13F/07
Mineral License Held by Situates near On map sheet	018038M Buchans Minerals Corporation Glover Island, Western NL 12A/13	Mineral License Held by Situates near On map sheet	018141M Great Western Minerals Group Ltd. Goose River 13F/07
Mineral License Held by Situates near On map sheet	018042M Labrador-Menihek Resources Inc. Rosemary Lake 23J/14	Mineral License Held by Situates near On map sheet	018796M Reid, Cyril Northwest Gander River, Central NL 02D/05
Mineral License Held by Situates near On map sheet	018047M Noel, E. Michele Sandy Harbour River, Burin Peninsula 01M/09, 01M/16	Mineral License Held by Situates near On map sheet	020745M, 020746M Altius Resources Inc. Pittmans Pond Area, Central NL 12H/07
Mineral License Held by Situates near On map sheet	018049M Lundrigan, Reg Burin, Burin Peninsula 01M/03	Mineral License Held by Situates near On map sheet	020748M Altius Resources Inc. Pipestone Pond, Central NL 02D/05, 12A/08
Mineral License Held by Situates near On map sheet	018058M Labrador-Menihek Resources Inc. Lac Clughny 23J/11	Mineral License Held by Situates near On map sheet	020743M Altius Resources Inc. Micmac Lake, Baie Verte Peninsula 12H/09, 12H/10
Mineral License Held by Situates near On map sheet	018062M Noel, E. Michele Rocky Pond Area, Central NL 02E/02	Mineral License Held by Situates near On map sheet	020742M Altius Resources Inc. Micmac Lake, Baie Verte Peninsula 12H/09
Mineral License Held by Situates near On map sheet	018083M Altius Resources Inc. Southwest Gander River, Central NL 02D/06, 02D/11	Mineral License Held by Situates near On map sheet	020744M Altius Resources Inc. Micmac Lake, Baie Verte Peninsula 12H/10
Mineral License Held by Situates near On map sheet	018098M Benton Resources Inc. Flat Bay Brook, Western NL 12B/08	Mineral License Held by Situates near On map sheet	020747M Altius Resources Inc. Pipestone Pond, Central NL 02D/05, 12A/08, 02D/12, 12A/09
Mineral License Held by Situates near On map sheet Mineral License	020677M Eagleridge International Limited Paradise River 13H/05 018135M	Mineral License Held by Situates near On map sheet	019699M 020741M Altius Resources Inc. Flatwater Pond, Baie Verte Peninsula 12H/16

THE NEWFOUNDLAND AND LABRADOR GAZETTE

April 11, 2014

Mineral License Held by Situates near On map sheet	018208M Noel, E. Michele Big Pond, Central NL 02E/02	Mineral License Held by Situates near On map sheet	019477M ACM Minerals Ltd. Bell Island, Avalon Peninsula 01N/10, 01N/11
Mineral License Held by Situates near On map sheet	018259M Tawsho Mining Inc. Kings Point Area, Central NL 12H/09	Mineral License Held by Situates near On map sheet	020595M MacDonald, David North of Shoulder Blade Lake, Central NL 12A/16
Mineral License Held by Situates near On map sheet	018260M Tawsho Mining Inc. Kings Point Area, Central NL 12H/09	Mineral License Held by Situates near On map sheet	019488M Reid, Patricia E. Great Rattling Brook, Central NL 02D/13
Mineral License Held by Situates near On map sheet	018261M Tawsho Mining Inc. Kings Point Area, Central NL 12H/09	Mineral License Held by Situates near On map sheet	019489M Reid, Patricia E. Great Rattling Brook, Central NL 02D/13
Mineral License Held by Situates near On map sheet	018262M Tawsho Mining Inc. Kings Point Area, Central NL 12H/09	Mineral License Held by Situates near On map sheet	019493M Metals Creek Resources Corp. Gander Lake, Central NL 02D/15
Mineral License Held by Situates near On map sheet	018281M Quinlan, Andrew Crabbes River, Western NL 12B/02	Mineral License Held by Situates near On map sheet	020157M Altius Resources Inc. Rocky Pond, Central NL 02E/01, 02E/02
Mineral License Held by Situates near On map sheet	018290M Rose, Shawn Stephenville, Western NL 12B/10	Mineral License Held by Situates near On map sheet	019498M McLennon, Tom Long Island Tickle, Central NL 02E/12
A portion of license Held by Situates near On map sheet more particularly described in an application on file at Department of Natural Resources.	018401M Quinlan, Roland Goobies Area, Avalon Peninsula 01N/13	Mineral License Held by Situates near On map sheet	019536M Altius Resources Inc. Hamilton River 13E/01
Mineral License Held by Situates near On map sheet	019302M Tawsho Mining Inc. Kings Point Area, Central NL 12H/09	Mineral License Held by Situates near On map sheet	019547M Hicks, Darrin Kivivic Lake 23J/14
Mineral License Held by Situates near On map sheet	019462M Ryan, Kevin Random Island, Eastern NL 02C/04	Mineral License Held by Situates near On map sheet	019551M Sweetapple, Walter Gambo, Central NL 02D/16
Mineral License Held by Situates near On map sheet	019463M Ryan, Kevin Random Island, Eastern NL 02C/04	Mineral License Held by Situates near On map sheet	019552M Kendell, Colin Albert Little River, Southern NL 01M/13
Mineral License Held by Situates near On map sheet	019475M ACM Minerals Ltd. Cape St Francis, Avalon Peninsula 01N/15	Mineral License Held by Situates near On map sheet	019554M Liao, Aimin Carpon Cove, Great Northern Peninsula 02M/05
Mineral License Held by Situates near On map sheet	019476M ACM Minerals Ltd. Bell Island, Avalon Peninsula 01N/10	Mineral License Held by Situates near On map sheet	019561M Quinlan, Eddie Chapel Island, Central NL 02E/07, 02E/10
		Mineral License Held by Situates near On map sheet	019565M Ryan, Kevin Random Island, Eastern NL 02C/04

THE NEWFOUNDLAND AND LABRADOR GAZETTE
April 11, 2014

Mineral License Held by Situates near On map sheet	019566M Ryan, Kevin Random Island, Eastern NL 02C/04	Mineral License Held by Situates near On map sheet	020461M McLennon, Tom Pilleys Island, Central NL 02E/05, 02E/12
Mineral License Held by Situates near On map sheet	020896M Benton Resources Inc. Goose Arm Pond, Western NL 12H/04, 12H/05	Mineral License Held by Situates near On map sheet	020532M Watson, Franklyn Steady Brook Pond, Western NL 12A/13
Mineral License Held by Situates near On map sheet	020897M Benton Resources Inc. Goose Arm Pond, Western NL 12H/04	Mineral License Held by Situates near On map sheet	020534M Lannon, Rosalind Stony Brook, Central NL 02D/13
Mineral License Held by Situates near On map sheet	019568M Golden Ridge Resources Ltd. Lake Bond Area, Central NL 12H/01	Mineral License Held by Situates near On map sheet	020536M Cornerstone Resources Inc. Micmac Lake, Baie Verte Peninsula 12H/09
Mineral License Held by Situates near On map sheet	019570M Lannon, Rosalind Grand Falls, Central NL 02D/13	Mineral License Held by Situates near On map sheet	020537M Jacobs, Daniel Indian Pond, Central NL 12H/08, 12H/07, 12H/09, 12H/10
Mineral License Held by Situates near On map sheet	019588M Griffin, Deirdre Thwart Island, Central NL 02E/06	Mineral License Held by Situates near On map sheet	020539M Hurley, Wayne Indian Pond, Central NL 12H/09, 12H/10
Mineral License Held by Situates near On map sheet	019589M Crocker, Calvin M. Thwart Island, Central NL 02E/06	Mineral License Held by Situates near On map sheet	020558M Courtney, Stephen Stony Brook, Central NL 02D/13
Mineral License Held by Situates near On map sheet	019590M Fraser, Dean Thwart Island, Central NL 02E/06	Mineral License Held by Situates near On map sheet	020559M Quinlan, Marilyn Inspector Island, Central NL 02E/07
Mineral License Held by Situates near On map sheet	019593M Fraser, Dean Stanhope, Central NL 02E/06	Mineral License Held by Situates near On map sheet	020565M Hurley, Peter West of Marble Cove Area, Baie Verte Peninsula 12H/16
Mineral License Held by Situates near On map sheet	019608M Fraser, Garry B. Stanhope Area, Central NL 02E/06	Mineral License Held by Situates near On map sheet	020566M Bolt, Darryl Grand Le Pierre, Fortune Bay 01M/10
A portion of license Held by Situates near On map sheet more particularly described in an application on file at Department of Natural Resources	019872M Pleasant Ridge Resources Inc. Wild Bight, Central NL 02E/10	Mineral License Held by Situates near On map sheet	020568M Sweetapple, Walter West of Paradise River 13B/10
A portion of license Held by Situates near On map sheet more particularly described in an application on file at Department of Natural Resources	021751M Quinlan, Roland Miles Cove, Central NL 02E/12	Mineral License Held by Situates near On map sheet	020570M Sweetapple, Walter West of Paradise River 13B/10
Mineral License Held by Situates near On map sheet	020248M Fox, Natasha Khan Rocky Pond Area, Western Nfld 12H/05	Mineral License Held by Situates near On map sheet	020571M Stokes, Mike Glenwood Area, Central NL 02D/15
		Mineral License Held by Situates near On map sheet	020572M Sweetapple, Walter St Paul River 13B/08, 13B/09

THE NEWFOUNDLAND AND LABRADOR GAZETTE

April 11, 2014

Mineral License Held by Situates near On map sheet	020574M Smith, Leroy Arnolds Cove, Avalon Peninsula 01N/13	Mineral License Held by Situates near On map sheet	020601M Martin, John Crooks Lake 13B/11
Mineral License Held by Situates near On map sheet	020575M Marathon Gold Corporation Wilding Lake, Central NL 12A/07	Mineral License Held by Situates near On map sheet	020607M Stares, Mike Frenchman Cove, Southern NL 01M/12
Mineral License Held by Situates near On map sheet	020576M Chafe, Alexander Friar Head, Fortune Bay 01M/11	Mineral License Held by Situates near On map sheet	020608M B&A Minerals Ltd. Great Gull Lake, Central NL 12H/01
Mineral License Held by Situates near On map sheet	020579M Ryan, Kevin Conception Bay South, Avalon Peninsula 01N/07	Mineral License Held by Situates near On map sheet	020610M B&A Minerals Ltd. Great Gull Lake, Central NL 12H/01
Mineral License Held by Situates near On map sheet	020580M Ryan, Kevin Conception Bay South, Avalon Peninsula 01N/07	Mineral License Held by Situates near On map sheet	020611M Strong, Paul Gull Pond, Baie Verte Peninsula 12H/16
Mineral License Held by Situates near On map sheet	020581M Keats, Allan E. T. Victoria Lake, Central NL 12A/06	Mineral License Held by Situates near On map sheet	020616M Kelly Jr, Daniel Clanceys Pond, Burin Peninsula 01M/03
Mineral License Held by Situates near On map sheet	020582M Keats, Allan E. T. Long Lake, Central NL 12A/06	Mineral License Held by Situates near On map sheet	020617M Stares, Mike Hungry Hill, Central NL 12A/10
Mineral License Held by Situates near On map sheet	020583M Keats, Christina Long Lake, Central NL 12A/06	Mineral License Held by Situates near On map sheet	020618M Stares, Mike Seal Cove Pond, Avalon Peninsula 01N/14
Mineral License Held by Situates near On map sheet	020584M Martin, Cameron Crooks Lake 13B/11	Mineral License Held by Situates near On map sheet	020625M LeDrew, Jeffrey Great Gull River, Central NL 02D/11 02D/12
Mineral License Held by Situates near On map sheet	020585M Martin, Jeffrey Crooks Lake 13B/11	Mineral License Held by Situates near On map sheet	020627M LeDrew, Jeffrey Great Gull River, Central NL 02D/12
Mineral License Held by Situates near On map sheet	020586M Stares, Mike Indian Bay Pond, Central NL 02E/01	Mineral License Held by Situates near On map sheet	020628M LeDrew, Jeffrey Dead Wolf Brook, Central NL 02D/10
Mineral License Held by Situates near On map sheet	020590M Turpin, Lindsay Clanceys Pond, Burin Peninsula 01M/03	Mineral License Held by Situates near On map sheet	020638M Marathon Gold Corporation Long Lake Area, Central NL 12A/06
Mineral License Held by Situates near On map sheet	020592M Molloy, Philip Clanceys Pond, Burin Peninsula 01M/03	Mineral License Held by Situates near On map sheet	020639M Quinlan, Andrew Seal Bay Area, Central NL 02E/05
Mineral License Held by Situates near On map sheet	020600M Liao, Aimin White Bear Bay, Southern NL 11P/14	Mineral License Held by Situates near On map sheet	020646M Eagleridge International Limited Panchia Lake 23H/02

THE NEWFOUNDLAND AND LABRADOR GAZETTE
April 11, 2014

Mineral License 020656M
Held by Stares, Robert T.
Situates near Home Pond Area, Central NL
On map sheet 02D/16

Mineral License 020663M
Held by Keats, Kevin D.
Situates near Jacksons Arm, White Bay Area
On map sheet 12H/15

Mineral License 020664M
Held by Keats, Kevin D.
Situates near Jacksons Arm, White Bay Area
On map sheet 12H/15

Mineral License 020667M
Held by Unity Resources Inc.
Situates near Baie Verte Area
On map sheet 12H/16

Mineral License 020706M
Held by Kelloway, Keith
Situates near Lawn, Burin Peninsula
On map sheet 01L/14, 01L/13

Mineral License 020707M
Held by Kelloway, Keith
Situates near Lunch Pond, Burin Peninsula
On map sheet 01M/03

Mineral License 020708M
Held by Kelloway, Keith
Situates near St. Lawrence Area, Burin Peninsula
On map sheet 01L/14

Mineral License 020713M
Held by Pike, Lloyd
Situates near Northwest Brook, Eastern NL
On map sheet 02C/04

Mineral License 020715M
Held by Pretty, Adam
Situates near Pine Cove Area, Baie Verte Peninsula
On map sheet 12H/16

Mineral License 020720M
Held by Michelin, Richard
Situates near Misty Lake
On map sheet 23H/05

Mineral License 020722M
Held by Ubique Minerals Ltd.
Situates near Wabush Lake
On map sheet 23G/02

Mineral License 021622M
Held by Fox, Natasha Khan
Situates near Fox Island River, Western NL
On map sheet 12B/10

Mineral License 021623M
Held by Fox, Natasha Khan

Situates near Fox Island River, Western NL
On map sheet 12B/10

Mineral License 021752M
Held by Natural Resources
Situates near Fortune Bay - Test Staking
On map sheet 01M/04

The lands covered by this notice except for the lands within Exempt Mineral Lands, the Exempt Mineral Lands being described in CNLR 1143/96 and NLR 71/98, 104/98, 97/00, 36/01, 31/04, 78/06, 8/08, 28/09 and 5/13 and outlined on 1:50 000 scale digital maps maintained by the Department of Natural Resources, will be open for staking after the hour of 9:00 a.m. on the 32nd clear day after the date of this publication.

DEPARTMENT OF NATURAL RESOURCES
JUSTIN LAKE
Manager - Mineral Rights

File #s 774: 0420, 3424, 3441, 4430, 4500, 5372, 5453, 5462, 5477, 5657, 5683, 5685, 5758, 5769, 6442, 6512, 6803, 6815, 7574, 7576, 7582, 7754, 7771, 7940, 7942, 8741, 8782, 9028, 9034, 9170, 9737, 9991,

775: 0043, 0046, 0052, 0097, 0098, 0099, 0100, 0459, 0472, 0490, 0515, 0525, 0564, 0567, 0588, 0590, 0591, 0665, 0670, 0672, 0676, 0678, 0685, 0860, 0884, 0885, 0947, 1391, 1419, 1421, 1422, 1425, 1426, 1429, 1433, 1436, 1437, 1446, 1450, 1464, 1473, 1497, 1504, 1506, 1507, 1508, 1509, 1510, 1511, 1517, 1520, 1526, 1528, 1540, 1575, 1622, 1623, 1624, 1625, 1644, 1653, 1757, 2559, 2689, 2690, 2693, 2694, 2695, 2705, 2706, 2707, 2710, 2712, 2715, 2749, 2758, 2762, 2763, 2764, 2772, 2777, 2778, 2779, 2780, 2782, 2797, 2798, 2799, 2802, 2817, 2957, 3106, 3239, 3388, 3456, 3458, 3460, 3461, 3463, 3475, 3476, 3479, 3480, 3482, 3484, 3485, 3486, 3487, 3488, 3489, 3491, 3492, 3493, 3494, 3495, 3496, 3497, 3498, 3499, 3500, 3502, 3503, 3505, 3506, 3508, 3509, 3514, 3515, 3516, 3523, 3525, 3526, 3529, 3530, 3537, 3547, 3554, 3555, 3558, 3568, 3569, 3570, 3571, 3572, 3575, 3576, 4151, 4152, 4219

Apr 11

CHANGE OF NAME ACT, 2009

Under the authority vested in me by the *Change of Name Act, 2009*, SNL 2009 cC-8.1, I hereby certify that the following names have been changed.

Legal Name Changes
Processed During the Period – MARCH, 2014

<u>FORMER SURNAME</u>	<u>FORMER GIVEN NAME</u>	<u>CHILD SURNAME</u>	<u>CHILD GIVEN NAMES</u>	<u>ADDRESS</u>
O'REILLY	JAMES MATTHEW	KENT	JAMES MATTHEW	Bishops Falls
HILLIS	NOAH MATTHEW	BYRNE	NOAH MATTHEW	Happy Valley-Goose Bay
LOVEMAN	BRIANNA BROOKLYNN ALYSSA	GUY	BRIANNA BROOKLYNN ALYSSA	Botwood
CASHIN	SHELLEY BERNETA	BARTLETT	SHELLEY BERNETA	Channel-Port aux Basques
LEONARD-MILLER	MARY MARGARET	LEONARD	MARY MARGARET	Clarenville
KEARLEY	MATTHEW CLYDE	FORSEY	MATTHEW CLYDE	Conception Bay South
DOWNTON	BEVERLY DIANE	GRANTER	DIANE BEVERLY	Mount Pearl
DICKS	MICHAEL KENNETH	COLLINS	MICHAEL KENNETH	St. John's
DOYLE	JOSHUA LIAM	JONES	JOSHUA LIAM	St. John's
LOVEMAN	ACEN RILEY	GUY	ACEN RILEY	Botwood
MURRINS	GERARD PATRICK	MURRIN	GERARD PATRICK	St. John's
MURPHY	NATHAN MICHAEL	GUEST	NATHAN MICHAEL	St. John's
MURPHY	HAYLEIGH MARIE BEATRICE	GUEST	HAYLEIGH MARIE BEATRICE	St. John's
KIELEY	WILLIAM BRENNOCK	KEILEY	WILLIAM BRENNOCK	St. John's
HANCOCK	KRYSTAL SAVANNAH MARY	KAVANAGH	KRY'S SAVANNAH MARY	Corner Brook
HENNEBURY	MOLLY ELIZABETH	HENNEBURY-BENMORE	MOLLY ELIZABETH	Paradise
ANSTY	BERNARD	ANSTEY	BERNARD MICHAEL	St. John's
CHIRKA	NOAH THOMAS RICHARD	GALLANT	NOAH THOMAS RICHARD	Port au Port
HOLMES	CAMERON WESLEY ROSS	SNOW	CAMERON WESLEY ROSS	Clarenville
BRACE	FREDRICK KEITH	CAMPBELL	FREDRICK JOHN	Botwood
BURRY-EDWARDS	CAMERON RYAN	BURRY-STONE	CAMERON JOSEPH	Mount Pearl
HILLIS	WILLIAM LLOYD HANDRIGAN	BYRNE	WILLIAM LLOYD HANDRIGAN	Happy Valley-Goose Bay
FORSEY WISEMAN	CALISTA BELLA	FORSEY	CALISTA BELLA	Fortune
RUSSELL	BYRON ROY CORWIN	HAYTER	BYRON ROY CORWIN	Happy Valley-Goose Bay
BROOMFIELD-CHUBBS	CHARLIE ANNABELLA	CHUBBS	CHARLIE ANNABELLA	North West River
CURL	CYRIL CLAYTON	CHUBBS	CYRIL CLAYTON	St. Lewis
BENNETT	MICHAEL JOSEPH	KING	MICHAEL JOSEPH	Stephenville Crossing
COLE	ANDREW GLENN GARY	BEST	ANDREW GLENN GARY	Flatrock
PORTER-CARTER	NADIAH EVANGELINE	PORTER	NADIAH EVANGELINE	Flatrock
FRANCIS	CHARLES TERRY HERBERT	PARSONS FRANCIS	CHARLES TERRY HERBERT	Conception Bay South
SPURRELL	MANISH ROBERT	COLLINS	MANISH ROBERT	Glenwood
PORTER-CARTER	BRENDAN CHRISTOPHER	PORTER	BRENDAN CHRISTOPHER	Flatrock
OWENS	DAVID PATRICK	OLIVER	DAVID PATRICK	St. John's
KAVANAGH	KOBE PETER	HAWKINS	KOBE PETER	Goulds
BYERS	SCOTT FREDERICK	NOEL-STEEVES	ADAM-JOSHUA BRENDEN ALEXANDER	St. John's

Dated this 2nd day of April, 2014.

SERVICE NL
Ken Mullaly
Registrar, Vital Statistics

URBAN AND RURAL PLANNING ACT, 2000

**NOTICE OF REGISTRATION
MOUNT PEARL DEVELOPMENT REGULATIONS
2010 AMENDMENT NO. 29, 2014
(APT – ROW DWELLING AMENDMENT)**

TAKE NOTICE that MOUNT PEARL Development Regulations 2010 Amendment No. 29, 2014, adopted by Council on the 25th day of February, 2014, has been registered by the Department of Municipal Affairs.

In general terms, the purpose of MOUNT PEARL Development Regulations 2010 Amendment No. 29, 2014 is to stipulate the development standards for row dwelling development within the Apartment (APT) use zone.

MOUNT PEARL Development Regulations 2010 Amendment No. 29, 2014 comes into effect on the day that this notice is published in *The Newfoundland and Labrador Gazette*. Anyone who wishes to inspect a copy of this Amendment may do so at Mount Pearl City Hall, 3 Centennial Street, during normal working hours.

CITY OF MOUNT PEARL
Per: Michele Peach, Chief Administrative Officer

Apr 11

**QUIETING OF TITLES ACT
2013 01G 1667
IN THE SUPREME COURT OF
NEWFOUNDLAND AND LABRADOR
TRIAL DIVISION (GENERAL)**

NOTICE OF APPLICATION under the *Quieting of Titles Act*, RSNL1990, cQ-3, as amended;

NOTICE IS HEREBY given to all parties that ADVENTURE BAY CHARTERS INC., has applied to the Supreme Court of Newfoundland and Labrador, Trial Division, at St. John's, to have title to all that piece or parcel of land situate and being on the southern side of Stanley's Road at Long Pond, in the Town of Conception Bay South, in the province of Newfoundland and Labrador, as more particularly described and set forth in the Schedule hereunto annexed marked "A" of which the Applicant claims to be the owner, investigated and for a Declaration that Adventure Bay Charters Inc., is the absolute owner thereof, subject to an easement in favour of Newfoundland Power Inc. and Bell Aliant Regional Communications Inc. registered as number 289385, an easement in favour of Audene Eason as contained in the deed of conveyance registered as number 227734 and an easement in favour of Patricia Nightingale registered as Roll 2678, Frame 1886.

By Deeds of Conveyance registered as numbers 146572, 227734 and Roll 2667, Frame 2353, ADVENTURE BAY CHARTERS INC., acquired the subject property. The Applicant has been ordered to publish notice of the application as required by the above named Act. All

persons having title adverse to the said title claimed by the Applicant shall file in the Registry of the Supreme Court of Newfoundland and Labrador at St. John's particulars of such adverse claim and serve the same together with an Affidavit verifying same on the undersigned solicitors for the Applicant on or before the 12th day of May, 2014, after which date no party having any claim shall be permitted to file the same or be heard except by leave of the Court and subject to such conditions as the Court may deem just. All such adverse claims shall be then investigated as the said Supreme Court of Newfoundland and Labrador at St. John's may direct.

DATED AT the City of St. John's, in the province of Newfoundland and Labrador, this 31st day of March, 2014.

FRENCH & ASSOCIATES
Solicitors for the Applicant
PER: Christopher E. Gill

ADDRESS FOR SERVICE:
Suite 122, Elizabeth Towers
100 Elizabeth Avenue
St. John's, NL A1B 1S1

Tel: (709) 754-1800
Fax: (709) 754-2701

SCHEDULE "A"

SURVEY OF ADVENTURE BAY
CHARTERS INC'S LAND
STANLEYS ROAD, LONG POND

All that piece or parcel of land situate and being on the southern side of Stanleys Road at Long Pond, in the electoral district of Conception Bay South, Newfoundland and Labrador, Canada and being abutted as follows, that is to say:

BEGINNING at a point, said point having NAD83 coordinates of North 5264197.844 metres and East 307080.723 metres with reference to Crown Land Monument No. 83G 3220 having coordinates of North 5263816.579 metres and East 306426.337 metres and Crown Land Monument No. 83G 3244 having coordinates of North 5264306.696 metres and East 306995.113 metres of the Modified Three Degree Transverse Mercator Projection for Newfoundland and Labrador having a central meridian of 53 degrees west longitude;

THENCE running along by land in the name Percy Greenslade now or formerly belonging to Malcolm Greenslade registered in volume 2007 folio 119 of the Registry of Deeds in Newfoundland and Labrador South seventy-six degrees fifty minutes zero zero seconds West, twelve decimal nine zero two metres;

AND THENCE running South eighty degrees twelve minutes thirty five seconds West, thirteen decimal zero eight four metres;

AND THENCE running South seventy-six degrees zero two minutes forty-six seconds West, eighteen decimal eight four five metres;

AND THENCE running South seventy-nine degrees zero nine minutes thirty-four seconds West, thirty decimal five seven eight metres;

AND THENCE running South eighty-one degrees fifty-four minutes twenty-eight seconds West, thirty-six decimal seven eight two metres;

AND THENCE running South eighty-six degrees twenty-seven minutes forty-four seconds West, seven decimal nine nine two metres;

AND THENCE running North eighty-seven degrees zero one minutes thirty-six seconds West, twenty-one decimal one five two metres;

AND THENCE running South eighty-seven degrees twenty-three minutes twenty-four seconds West, nineteen decimal eight nine four metres;

AND THENCE running South eighty-one degrees thirty-eight minutes thirty-eight seconds West, eight decimal four four seven metres;

AND THENCE running South seventy-six degrees thirty-five minutes zero zero seconds West, eight decimal four seven eight metres;

AND THENCE running South eighty-six degrees thirty-six minutes forty-five seconds West, nine decimal seven eight eight metres;

AND THENCE running South eighty-five degrees forty-eight minutes fifty-six seconds West, eight decimal four nine one metres;

AND THENCE running South eighty degrees thirty-nine minutes twenty-four seconds West, seventeen decimal four five seven metres;

AND THENCE running South eighty-six degrees zero eight minutes twenty-five seconds West, twenty decimal five nine zero metres;

AND THENCE running North eighty-seven degrees seventeen minutes nineteen seconds West, sixteen decimal six one two metres;

AND THENCE running North eighty-four degrees thirty-two minutes fifty seconds West, nineteen decimal three seven eight metres;

AND THENCE running North eighty-six degrees twenty-two minutes fifty-two seconds West, thirty-seven decimal six one zero metres;

AND THENCE running North eighty-four degrees thirty-five minutes fifty-seven seconds West, ten decimal five three two metres;

THENCE running along by the sinuosities of the Ordinary High Water Mark (OHWM) of the waters of Long Pond (1951) granted to Long Pond Harbour Authority Inc., having registration no. 621493 of the Registry of Deeds in Newfoundland and Labrador subtended by a bearing and

distance of North seven degrees zero seven minutes zero five seconds West, two hundred twelve decimal eight five three metres;

THENCE running along by land registered to Melvin Eason in roll 1166 frame 902 of the Registry of Deeds in Newfoundland and Labrador South seventy degrees twenty-three minutes zero zero seconds East, nine decimal six nine nine metres;

THENCE running along by Stanleys Road South thirty-one degrees thirty-one minutes zero zero seconds East, eight decimal one zero nine metres;

AND THENCE running South ten degrees fifty-eight minutes zero zero seconds East, ten decimal one seven zero metres;

AND THENCE running South fifty degrees fifty-two minutes zero eight seconds East, six decimal nine two six metres;

AND THENCE running South seventy-five degrees thirty-five minutes forty-eight seconds East, twenty-six decimal three zero one;

THENCE running along by land registered to the Town of Conception Bay South having registration no. 233235 and 9323 of the Registry of Deeds in Newfoundland and Labrador and thence by land registered to Patricia Nightingale in roll 2678 frame 1886 of the Registry of Deeds in Newfoundland and Labrador South one degree sixteen minutes forty seconds West, seventy-two decimal five nine zero metres;

THENCE running along by land registered to Fairview Investments Limited having registration no. 76879 of the Registry of Deeds in Newfoundland and Labrador South four degrees zero four minutes zero zero seconds East, fifty-nine decimal six eight zero metres;

AND THENCE running North eighty-eight degrees thirty-six minutes zero zero seconds East, six decimal four one zero metres;

AND THENCE running South eighty-six degrees thirteen minutes zero zero seconds East, nine decimal three nine zero metres;

AND THENCE running North eighty-eight degrees thirty-five minutes thirty seconds East, thirty-six decimal six two one metres;

AND THENCE running South eighty-four degrees fifty-two minutes thirty-seven seconds East, nineteen decimal nine seven three metres;

AND THENCE running South eighty-nine degrees forty-five minutes twenty-nine seconds East, eight decimal seven two four metres;

AND THENCE running South eighty-three degrees twenty-three minutes zero four seconds East, eighteen decimal seven nine eight metres;

AND THENCE running South seventy-seven degrees fifty-five minutes fifty-three seconds East, thirty-two decimal six four three metres;

AND THENCE running South eighty-five degrees zero eight minutes fifty-three seconds East, eight decimal seven five seven metres;

AND THENCE running North eighty-two degrees thirteen minutes twenty-four seconds East, fifteen decimal three nine seven metres;

AND THENCE running North seventy-nine degrees fifty-four minutes forty-one seconds East, twelve decimal nine two three metres;

AND THENCE running North eighty-two degrees fifty-six minutes forty-nine seconds East, six decimal four nine seven metres;

THENCE running by land registered to Steven Adams having registration no. 591905 of the Registry of Deeds in Newfoundland and Labrador South ten degrees forty-six minutes forty-three seconds East, twenty-seven decimal zero three zero metres;

AND THENCE running North eighty-six degrees twenty-seven minutes forty-four seconds East, two decimal zero three eight metres;

AND THENCE running North eighty-one degrees fifty-four minutes forty seconds East, thirty-five decimal nine six six metres;

THENCE running by land registered to Steven Adams having registration no. 591905 of the Registry of Deeds in Newfoundland and Labrador;

AND THENCE by land registered to Audene Eason in roll 817 frame 1421 and roll 817 frame 1411 of the Registry of Deeds in Newfoundland and Labrador North seventy-nine degrees zero nine minutes forty-six seconds East, twenty-nine decimal nine two three metres;

AND THENCE running North seventy-six degrees zero two minutes fifty-eight seconds East, eighteen decimal nine six three metres;

AND THENCE running North eighty degrees twelve minutes thirty five seconds East, thirteen decimal one seven two metres;

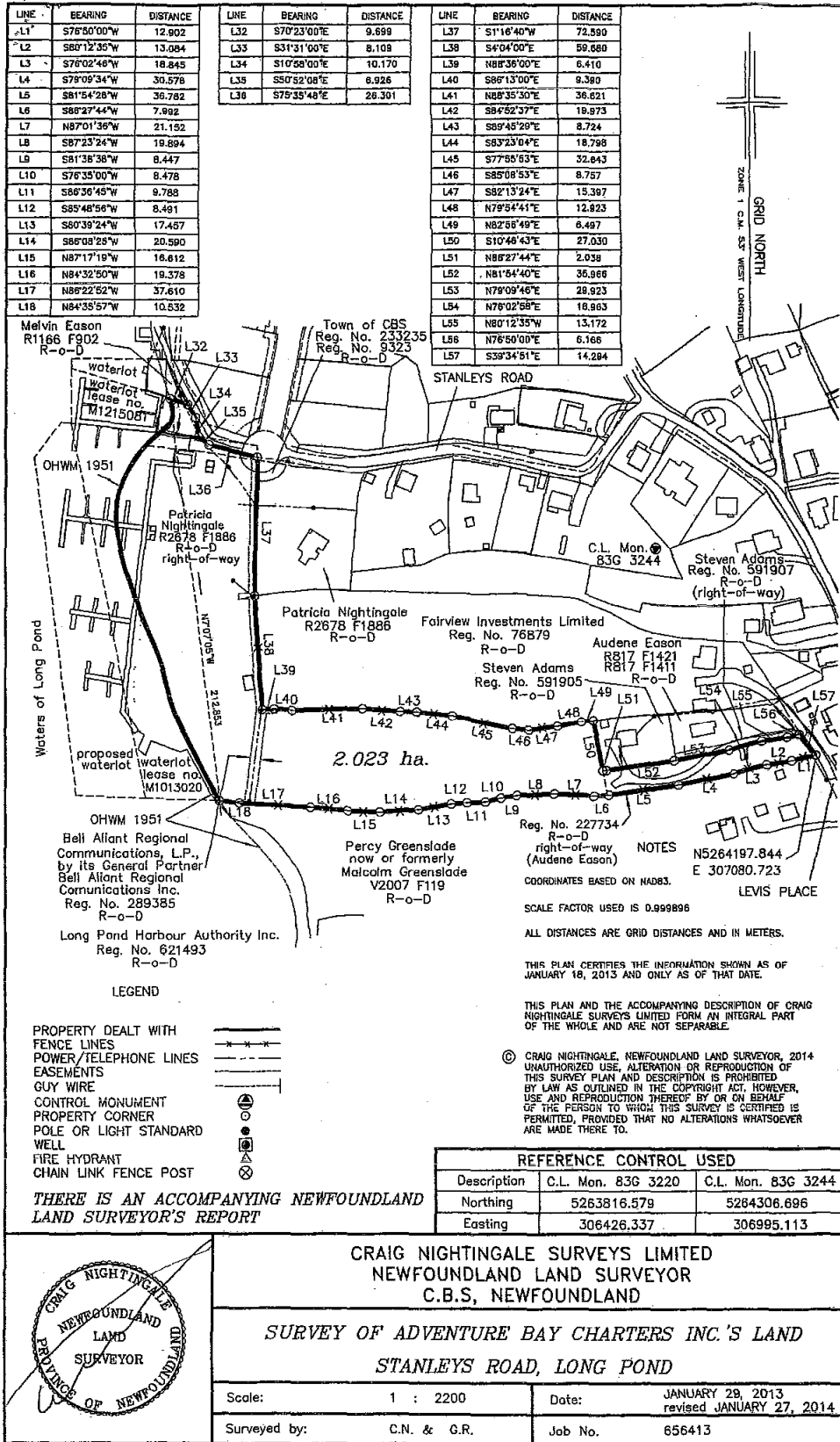
AND THENCE running North seventy-six degrees fifty minutes zero zero seconds East, six decimal one six six metres;

THENCE running by Levis Place South thirty-nine degrees thirty four minutes fifty-one seconds East, fourteen decimal two nine four metres, more or less, to the point of beginning.

The above described parcel of land has an area of 2.023 hectares more or less and is shown more fully delineated on the adjoining plan having Job no. 656413 dated January 29, 2013 revised January 27, 2014.

All the bearings are referred to Grid North of the above mentioned projection. SUBJECT TO, nevertheless, an easement registered to Bell Aliant Regional Communications, L.P., by its General Partner Bell Aliant Regional Communications Inc. having registration no. 289385 of the Registry of Deeds in Newfoundland and Labrador (R-o-D), a right-of-way to access Long Pond Harbour for the use of Patricia Nightingale as indicated in roll 2678 frame 1886 (R-o-D), another right-of-way for the use of Audene Eason as indicated in deed having registration no. 227734 (R-o-D) as shown on the adjoining plan. The only visible signs of encroachment on the parcel of land are three utility poles, one guy wire, overhead wires, a fenceline along by Melvin Eason's land and a portion of the asphalt on the cul-de-sac of Stanleys Road as shown on the adjoining plan. It should be noted that an uninterrupted and unimpeded pedestrian access be maintained along the shoreline area according to approval by the Town of Conception Bay South.

It also should be noted the shoreline has changed over the years to accommodate the wharves and wharf infrastructure as shown on the adjoining plan. All distances are grid distances using a scale factor of 0.999896.



TRUSTEE ACT

CORRECTION TO ESTATE NOTICE

IN THE ESTATE of GERARD FRANCIS GRIFFIN notice published in *The Newfoundland and Labrador Gazette* on March 28, 2014, Vol. 89, No 13.

The date by which all persons claiming to be creditors of the Estate of GERARD FRANCIS GRIFFIN are requested to send written particulars thereof to the Solicitor for the Personal Representative of the Estate is on or before May 5th 2014 and not May 25, 2014, as stated in the original Estate Notice published in *The Newfoundland and Labrador Gazette* on March 28, 2014, Vol. 89, No 13.

DATED at Stephenville, Newfoundland and Labrador this 3rd day of April, 2014.

PIKE LAW
Solicitor for the Personal Representative
PER: Roxanne Pike

ADDRESS FOR SERVICE:
P. O. Box 272
43 Main Street
Stephenville, NL A2N 2Z4

Tel: (709) 643-6436
Fax: (709) 643-9343

Apr 11

ESTATE NOTICE

IN THE MATTER of the Estate of MARGARET GRACE, Late of St. John's, in the Province of Newfoundland and Labrador, Deceased,

All persons claiming to be creditors of or who have any claims or demands either as beneficiaries or next of kin (by blood, legal adoption or marriage) upon or affecting the Estate of MARGARET GRACE, Gentlewoman, who died at St. John's, NL on or about June 20, 2013, are hereby requested to send particulars thereof in writing, duly attested, to the Office of the Public Trustee, 401 - 136 Crosbie Road, St. John's, NL, A1B 3K3, Administrator of the Estate of MARGARET GRACE, on or before May 14, 2014, after which date the said Administrator will proceed to distribute the Estate having regard only to the claims of which he then shall have had notice.

DATED at St. John's, this 4th day of April, 2014.

OFFICE OF THE PUBLIC TRUSTEE
Administrator of the
Estate of MARGARET GRACE

ADDRESS FOR SERVICE:
Suite 401, Viking Building
136 Crosbie Road, St. John's, NL A1B 3K3

Tel: (709) 729-3548 (direct)
(709) 729-0850 (reception)
Fax: (709) 729-3063

Apr 11

ESTATE NOTICE

IN THE MATTER OF the Estate and Effects of the Late EDMUND J. LEVALLIANT, Late of the Town of Gander, in the Province of Newfoundland and Labrador, Retired Engineer, Deceased.

All persons claiming to be creditors of or who have any claims or demands upon or affecting the Estate of EDMUND J. LEVALLIANT, Late of the Town of Gander, aforesaid, deceased, are hereby requested to send particulars thereof, in writing, duly attested, to the undersigned solicitors for the Executor of the Estate of the said deceased on or before the 25th day of April, 2014, after which date the said Executor will proceed to distribute the Estate having regard only to the claims of which they then shall have notice.

DATED at the Town of Gander, in the Province of Newfoundland and Labrador, this 28th day of March, 2014.

EASTON HILLIER LAWRENCE PRESTON
Solicitors for the Executor
PER: Mary (Waterman) Newton

ADDRESS FOR SERVICE:
Polaris Building
61 Elizabeth Drive
Gander, NL A1V 1G4

Tel: (709) 256-4006
Fax: (709) 651-2850

Apr 11

ESTATE NOTICE

IN THE ESTATE of THERESA FRANCES WHITE, Late of Stephenville, in the Province of Newfoundland and Labrador, deceased: October 27, 2012.

All persons claiming to be creditors of or who have any claims or demands upon or affecting the Estate of THERESA FRANCES WHITE, Late of Stephenville, in the Province of Newfoundland and Labrador, deceased, are hereby requested to send the particulars of the same in writing, duly attested, to the undersigned Solicitor for the Executrix of the Estate on or before the 12th day of May, 2014, after which date the said Executrix will proceed to distribute the said Estate having regard only to the claims of which notice shall have been received.

DATED at Stephenville, Newfoundland and Labrador, this
2nd day of April, 2014.

PIKE LAW
Solicitor for the Executrix
PER: Roxanne Pike

ADDRESS FOR SERVICE:
P. O. Box 272
43 Main Street
Stephenville, NL A2N 2Z4

Tel: (709) 643-6436
Fax: (709) 643-9343

Apr 11



THE NEWFOUNDLAND AND LABRADOR GAZETTE

PART II

SUBORDINATE LEGISLATION
FILED UNDER THE STATUTES AND SUBORDINATE LEGISLATION ACT

Vol. 89

ST. JOHN'S, FRIDAY, APRIL 11, 2014

No. 15

NEWFOUNDLAND AND LABRADOR
REGULATION

NLR 35/14



NEWFOUNDLAND AND LABRADOR REGULATION 35/14

*Members' Resources and Allowances Rules
(Amendment)
under the
House of Assembly Accountability, Integrity
and Administration Act*

(Filed April 8, 2014)

Under the authority of subsection 20(7) and section 64 of the *House of Assembly Accountability, Integrity and Administration Act*, as approved by the House of Assembly Management Commission on March 13, 2014 and tabled in the House of Assembly on March 31, 2014, and further to a resolution adopted by the House of Assembly on April 1, 2014, the House of Assembly Management Commission makes the following rules.

Dated at St. John's, April 7, 2014.

Ross Wiseman
Chairperson, House of Assembly Management Commission
and Speaker of the House of Assembly

REGULATIONS

Analysis

1. Sch. A R&S

SNL2007 cH-10.01
Sch. as amended

1. Schedule A of the *Members' Resources and Allowances Rules* is repealed and the following substituted:

Schedule A

House Operations
Estimates of Intra-constituency Costs

District No.	Electoral District	Total
1	Baie Verte - Springdale	\$11,900
2	Bay of Islands	12,500
3	Bellevue	13,100
4	Bonavista North	10,100
5	Bonavista South	10,100
6	Burgeo - LaPoile	11,300
7	Burin - Placentia West	8,200
8	Cape St. Francis	7,200
9	Carbonear - Harbour Grace	7,700
10	Cartwright - L'Anse au Clair	25,600
11	Conception Bay East - Bell Island	7,700
12	Conception Bay South	6,100
13	Exploits	10,100
14	Ferryland	10,100
15	Fortune Bay - Cape La Hune	16,300
16	Gander	7,700
17	Grand Bank	12,000
18	Grand Falls-Windsor - Buchans	9,100
19	Grand Falls-Windsor - Green Bay South	9,700
20	Harbour Main	6,900
21	Humber East	6,300
22	Humber Valley	12,000
23	Humber West	7,100
24	Kilbride	6,100
25	Labrador West	7,700
26	Lake Melville	6,900
27	Lewisporte	9,200
28	Mount Pearl North	6,000
29	Mount Pearl South	6,000
30	Placentia - St. Mary's	11,500
31	Port au Port	6,800
32	Port de Grave	7,700
33	Signal Hill - Quidi Vidi	6,000
34	St. Barbe	11,900
35	St. George's - Stephenville East	7,700
36	St. John's Centre	6,000

*Members' Resources and Allowances Rules
(Amendment)*

35/14

District No.	Electoral District	Total
37	St. John's East	6,000
38	St. John's North	6,000
39	St. John's South	6,000
40	St. John's West	6,000
41	Terra Nova	12,700
42	The Isle of Notre Dame	9,800
43	The Straits - White Bay North	10,800
44	Topsail	6,000
45	Torngat Mountains	20,700
46	Trinity - Bay de Verde	8,600
47	Trinity North	8,200
48	Virginia Waters	<u>6,000</u>
	Total	<u>\$445,100</u>

©Queen's Printer

Index

PART I

Change of Name Act, 2009 – Notice	151
Mineral Act – Notice	143
Quieting of Titles Act – Notice.....	152
Trustee Act – Notices	156
Urban and Rural Act, 2000 – Notice.....	152

PART II

CONTINUING INDEX OF SUBORDINATE LEGISLATION

Title of Act and Subordinate Legislation made thereunder	CNLR or NL Reg.	Amendment	NL Gazette Date & Page No.
House of Assembly Accountability, Integrity and Administration Act			
Members' Resources and Allowances Rules (Amdt.)	NLR 35/14	Amends SNL 2007 cH-10.01 Sch. A R&S	Apr 11/14 p. 163

The Newfoundland and Labrador Gazette is published from the Office of the Queen's Printer.

Copy for publication must be received by **Friday, 4:30 p.m.**, seven days before publication date to ensure inclusion in next issue.

Advertisements must be submitted in either PDF format or as a MSWord file. When this is not possible, advertisements must be either typewritten or printed legibly, separate from covering letter. Number of insertions required must be stated and the names of all signing officers typewritten or printed.

Copy may be mailed to the address below, faxed to (709) 729-1900 or emailed to queensprinter@gov.nl.ca.

Advertising rates are available upon request. Subscription rate for *The Newfoundland and Labrador Gazette* is \$125.00 for 52 weeks plus applicable tax (\$131.25). Weekly issues of \$3.00 per copy, plus tax payable in advance.

All cheques, money orders, etc., should be made payable to THE NEWFOUNDLAND EXCHEQUER ACCOUNT and all correspondence should be addressed to: Office of the Queen's Printer, P. O. Box 8700, Ground Floor, East Block, Confederation Building, St. John's, NL A1B 4J6. Telephone (709) 729-3649. Fax: (709) 729-1900.

Web Site: <http://www.servicenl.gov.nl.ca/printer/index.html>

**Place your order by contacting:
Office of the Queen's Printer
Confederation Building, East Block
St. John's, NL A1B 4J6
Telephone: (709) 729-3649 Fax: (709) 729-1900
email: queensprinter@gov.nl.ca**

**Government Information Product
Publication Rate Mail
G.S.T. # R107442683**

All requests for Subscription and Legislation MUST be prepaid.