



THE NEWFOUNDLAND AND LABRADOR GAZETTE

PART I

PUBLISHED BY AUTHORITY

Vol. 89

ST. JOHN'S, FRIDAY, SEPTEMBER 19, 2014

No. 38

MINERAL ACT

NOTICE

Published in accordance with section 62 of CNLR 1143/96 under the *Mineral Act*, cM-12, RSNL 1990 as amended.

Mineral rights to the following mineral licenses have reverted to the Crown:

Mineral License 008518M
Held by Mercer, William
Situates near Badger, Central NL
On map sheet 12A/16, 12H/01

Mineral License 010264M
Held by Mercer, William
Situates near Little Joe Glodes, Central NL
On map sheet 12H/01

A portion of license 019369M
Held by Alterra Resources Inc.
Situates near Fox Harbour
On map sheet 03D/05
more particularly described in an application on file at Department of Natural Resources.

A portion of license 019370M
Held by Alterra Resources Inc.
Situates near St Lewis Inlet

On map sheet 03D/05, 13A/08
more particularly described in an application on file at Department of Natural Resources.

A portion of license 019577M
Held by Alterra Resources Inc.
Situates near White Bear Bay
On map sheet 03D/04, 03D/05
more particularly described in an application on file at Department of Natural Resources.

Mineral License 019692M
Held by Gordon Franics Peddle(50%)/Donald R. Peddle(50%)
Situates near Georges Pond, Eastern NL
On map sheet 02D/01, 02D/08

Mineral License 022115M
Held by Gordon Franics Peddle(50%)/Donald R. Peddle(50%)
Situates near Clarenville Area, Eastern NL
On map sheet 02D/01

A portion of license 019693M
Held by Gordon Franics Peddle(50%)/Donald R. Peddle(50%)
Situates near Clarenville Area, Eastern NL
On map sheet 02D/01
more particularly described in an application on file at Department of Natural Resources.

THE NEWFOUNDLAND AND LABRADOR GAZETTE
September 19, 2014

Mineral License Held by Situates near On map sheet	019763M Eagleridge International Limited Alexis River 13A/10	Mineral License Held by Situates near On map sheet	019933M Turpin, Alexander J. Northwest of Lawn, Burin Peninsula 01L/13
Mineral License Held by Situates near On map sheet	020604M Roche, Vincent D. English Pond, Avalon Peninsula 01K/13, 01N/04	Mineral License Held by Situates near On map sheet	019934M Turpin, Alexander J. Northwest of Lawn, Burin Peninsula 01L/13
Mineral License Held by Situates near On map sheet	019790M MAC Minerals Ltd. Red Indian Lake, Central NL 12A/15	Mineral License Held by Situates near On map sheet	019950M Midland Exploration Inc. Lac Chapiteau Area 13M/11
Mineral License Held by Situates near On map sheet	019801M Hicks, David Northwest Cove, Southern NL 01M/13	Mineral License Held by Situates near On map sheet	019961M Maritime Resources Corp. Kings Point Area, Central NL 12H/09
Mineral License Held by Situates near On map sheet	019806M White, Jason Foxtrap Turnoff, Avalon Peninsula 01N/07	Mineral License Held by Situates near On map sheet	020029M Hicks, Darrin Fair and False Bay, Eastern NL 02C/12
Mineral License Held by Situates near On map sheet	019809M MAC Minerals Ltd. Red Indian Lake, Central NL 12A/15	A portion of license Held by Situates near On map sheet	021020M MacDonald, David North of Shoulder Blade Lake, Central NL 12A/16 more particularly described in an application on file at Department of Natural Resources.
Mineral License Held by Situates near On map sheet	019815M MAC Minerals Ltd. Red Indian Lake, Central NL 12A/15	Mineral License Held by Situates near On map sheet	020032M Hicks, David Fair and False Bay, Eastern NL 02C/12
Mineral License Held by Situates near On map sheet	019830M Eagleridge International Limited Alexis River 13A/10	Mineral License Held by Situates near On map sheet	020033M Hicks, Darrin Fair and False Bay, Eastern NL 02C/12
Mineral License Held by Situates near On map sheet	019885M Mercer, William Dawes Pond, Central NL 12H/01	Mineral License Held by Situates near On map sheet	020036M Thomas Resources Inc. Corner Brook Lake, Western NL 12A/13
Mineral License Held by Situates near On map sheet	019890M Malhi, Kal Alexis River 13A/10	Mineral License Held by Situates near On map sheet	020037M Thomas Resources Inc. Corner Brook Lake, Western NL 12A/13
Mineral License Held by Situates near On map sheet	019900M Eagleridge International Limited Paradise River Area 13H/04	Mineral License Held by Situates near On map sheet	020043M Shabogamo Mining & Exploration Limited Miles Lake 23B/14
Mineral License Held by Situates near On map sheet	019917M Rose, Shawn Southwest Brook, West - Central NL 12B/08	Mineral License Held by Situates near On map sheet	020045M Hicks, Darrin Long Point, Western NL 12B/10, 12B/11
Mineral License Held by Situates near On map sheet	019924M Rhino Exploration Ltd. Gull Pond Area, Central NL 12H/09	Mineral License Held by Situates near On map sheet	020046M Thomas Resources Inc. Corner Brook Lake, Western NL 12A/13
Mineral License Held by Situates near On map sheet	019925M Burt, Kenneth Southwest Brook, West - Central NL 12B/08	Mineral License Held by	020058M Thomas Resources Inc.

THE NEWFOUNDLAND AND LABRADOR GAZETTE
September 19, 2014

Situate near On map sheet	Corner Brook Lake, Western NL 12A/13	Mineral License Held by Situate near On map sheet	022159M Fox, Natasha Khan Fox Island, Western NL 12B/10
Mineral License Held by Situate near On map sheet	020059M Thomas Resources Inc. Corner Brook Lake, Western NL 12A/13	Mineral License Held by Situate near On map sheet	020505M Fox, Natasha Khan Fox Island, Western NL 12B/10
Mineral License Held by Situate near On map sheet	020082M Eagleridge International Limited Red Indian Lake Area, Central NL 12A/16, 12A/15	A portion of license Held by Situate near On map sheet	020526M Puddle Pond Resources Inc. Lamaline Area, Burin Peninsula 01L/13, 01M/04 more particularly described in an application on file at Department of Natural Resources.
Mineral License Held by Situise near On map sheet	020105M Eagleridge International Limited Paradise River 13H/03, 13H/04, 13H/06, 13H/05	Mineral License Held by Situise near On map sheet	020777M Lannon, George Sandy Brook Area, Central NL 02D/13
Mineral License Held by Situise near On map sheet	020106M Eagleridge International Limited Paradise River 13H/03, 13H/04	Mineral License Held by Situise near On map sheet	020782M Crocker, Calvin M. Rolling Pond, Central NL 02D/11
Mineral License Held by Situise near On map sheet	020114M Ryan, Kevin St. Lawrence, Burin Peninsula 01L/14	Mineral License Held by Situise near On map sheet	020783M Griffin, Deirdre Northwest Gander River, Central NL 02D/05
Mineral License Held by Situise near On map sheet	020117M Budden, Andy Beaver Cove, Central NL 02E/10	Mineral License Held by Situise near On map sheet	020784M Burt, Kenneth Little Barachois Brook, Western NL 12B/08
Mineral License Held by Situise near On map sheet	020119M Eagleridge International Limited Gilbert Lake 13A/09, 13A/16	Mineral License Held by Situise near On map sheet	020785M Pretty, Adam First Pond, Central NL 02E/07
Mineral License Held by Situise near On map sheet	020121M Eagleridge International Limited Gilbert Lake 13A/09	Mineral License Held by Situise near On map sheet	020786M Pretty, Adam Top Pond, Southern NL 11P/13
A portion of license Held by Situise near On map sheet more particularly described in an application on file at Department of Natural Resources.	020153M Pleasant Ridge Resources Inc. North Great Rattling Brook, Central NL 02D/12	Mineral License Held by Situise near On map sheet	020788M Quinlan, Marilyn Little Bay, Central NL 02E/12
A portion of license Held by Situise near On map sheet more particularly described in an application on file at Department of Natural Resources.	020154M Pleasant Ridge Resources Inc. North Great Rattling Brook, Central NL 02D/12	Mineral License Held by Situise near On map sheet	020789M Quinlan, Marilyn Friar Head, Fortune Bay 01M/11
A portion of license Held by Situise near On map sheet more particularly described in an application on file at Department of Natural Resources.	020198M Triassic Properties Ltd Rambler, Baie Verte Peninsula 12H/16	Mineral License Held by Situise near On map sheet	020790M Quinlan, Andrew Winterhouse Cove, Baie Verte Peninsula 02E/13
A portion of license Held by Situise near On map sheet more particularly described in an application on file at Department of Natural Resources.	020503M Fox, Natasha Khan Fox Island, Western NL 12B/10	Mineral License Held by Situise near On map sheet	020791M Pinsent Jr, Nehemiah St Brendans, Eastern NL 02C/13
A portion of license Held by Situise near On map sheet more particularly described in an application on file at Department of Natural Resources.	020503M Fox, Natasha Khan Fox Island, Western NL 12B/10	Mineral License Held by	020792M Pinsent Jr, Nehemiah

THE NEWFOUNDLAND AND LABRADOR GAZETTE
September 19, 2014

Situate near On map sheet	St Brendans, Eastern NL 02C/13	Situate near On map sheet	Northwest Bottom, Central NL 02E/06
Mineral License Held by Situate near On map sheet	020793M Pinsent Jr, Nehemiah Bloody Reach, Eastern NL 02C/13	Mineral License Held by Situate near On map sheet	021078M Burton, Jason Hardy Harbour, Baie Verte Peninsula 02L/04
Mineral License Held by Situate near On map sheet	020794M Pinsent Jr, Nehemiah Port Blandford, Eastern NL 02D/08	Mineral License Held by Situate near On map sheet	021080M Hicks, Darrin Doucers Brook, White Bay Area 12H/10
Mineral License Held by Situate near On map sheet	020278M Cap-Ex Iron Ore Ltd. Snelgrove Lake 23I/12	Mineral License Held by Situate near On map sheet	021081M LeDrew, Donald Weirs Pond, Central NL 02E/01
Mineral License Held by Situate near On map sheet	020279M Cap-Ex Iron Ore Ltd. Snelgrove Lake 23J/09, 23I/12	Mineral License Held by Situate near On map sheet	021082M Denty, Paul Culls Harbour, Eastern NL 02C/12
Mineral License Held by Situate near On map sheet	020280M Cap-Ex Iron Ore Ltd. Point Lake Area 23J/08, 23I/05	Mineral License Held by Situate near On map sheet	021085M Burton, Jason Coachmans Harbour, Baie Verte Peninsula 12I/01
Mineral License Held by Situate near On map sheet	019072M Ryan, Kevin Long Gully, Avalon Peninsula 01N/06	Mineral License Held by Situate near On map sheet	021090M Lilly, Colin Arnolds Cove, Avalon Peninsula 01N/13
Mineral License Held by Situate near On map sheet	020229M Eagleridge International Limited Paradise River 13H/04	A portion of license Held by Situate near On map sheet	021612M Jones, Brian Red Indian Lake, Central NL 12A/11 more particularly described in an application on file at Department of Natural Resources.
Mineral License Held by Situate near On map sheet	020230M Ryan, Kevin Nut Cove, Eastern Nfld 02C/04	A portion of license Held by Situate near On map sheet	021613M Jones, Brian Red Indian Lake, Central NL 12A/11 more particularly described in an application on file at Department of Natural Resources.
Mineral License Held by Situate near On map sheet	020235M Griffin, Deirdre Jacksons Arm Area, White Bay 12H/15		
Mineral License Held by Situate near On map sheet	020237M Eagleridge International Limited Paradise River 13H/05		
Mineral License Held by Situate near On map sheet	020250M Eagleridge International Limited Port Hope Simpson 13A/09		
Mineral License Held by Situate near On map sheet	020257M LeDrew, Jeffrey Brigus Bay Area, Avalon Peninsula 01N/11		
Mineral License Held by Situate near On map sheet	021075M LeDrew, Jeffrey Tickle Harbour Point, Avalon Peninsula 01N/12		
Mineral License Held by	021076M Pike, Lloyd		

DEPARTMENT OF NATURAL RESOURCES
JUSTIN LAKE
Manager - Mineral Rights

File #s 774: 4595, 5705,

775: 2352, 2353, 2361, 2602, 2603, 2786, 2856,
2857, 2869, 2882, 2896, 2907, 2912, 2915,
2920, 2923, 2968, 2973, 2983, 2999, 3006,
3007, 3015, 3016, 3027, 3033, 3078, 3086,
3087, 3088, 3089, 3090, 3091, 3092, 3093,

3099, 3101, 3102, 3114, 3115, 3125, 3143,
3144, 3152, 3155, 3157, 3158, 3179, 3180,
3197, 3228, 3229, 3231, 3232, 3241, 3247,
3424, 3426, 3450, 3595, 3596, 3599, 3601,
3604, 3606, 3609, 3610, 3611, 3616, 3617,
3618, 3619, 3620, 3622, 3623, 3624, 3625,
3626, 3627, 3628, 3824, 3825, 3827, 3830,
3831, 3832, 3834, 3835, 4142, 4143.

Sept 19

URBAN AND RURAL PLANNING ACT, 2000

**NOTICE OF REGISTRATION
ST. JOHN'S MUNICIPAL PLAN
AMENDMENT NO. 128, 2014**

TAKE NOTICE that the ST. JOHN'S Municipal Plan Amendment Number 128, 2014, adopted on the 15th day of July, 2014, and approved on the 11th day of August, 2014, have been registered by the Minister of Municipal and Intergovernmental Affairs.

In general terms, the purpose of Municipal Plan Amendment Number 128, 2014, is to allow development standards of the Commercial General Land Use District to be governed by the appropriate zone requirements of the ST. JOHN'S Development Regulations.

These amendments come into effect on the date that this notice is printed in *The Newfoundland and Labrador Gazette*. Anyone who wishes to inspect a copy of the amendments may do so at the Department of Planning, 3rd Floor, St. John's City Hall during regular business hours.

CITY OF ST. JOHN'S
Ken O'Brien, MCIP –Chief Municipal Planner

Sept 19

**NOTICE OF REGISTRATION
TOWN OF GLOVERTOWN
MUNICIPAL PLAN AMENDMENT NO. 2, 2014
AND
DEVELOPMENT REGULATIONS
AMENDMENT NO. 3, 2014.**

TAKE NOTICE that the TOWN OF GLOVERTOWN Municipal Plan Amendment No. 2, 2014 and Development Regulations Amendment No. 3, 2014 adopted on the 30th day of July, 2014, and approved (as amended) on the 28th day of August, 2014, has been registered by the Minister of Municipal and Intergovernmental Affairs.

In general terms, the purpose of Municipal Plan Amendment No. 2, 2014 and Development Regulations Amendment No. 3, 2014 is to:

Change the land use designation of a site on the side of Riverside Road from Future Development Area to Residential as shown on Future Land Map 1.2. The purpose of the amendment is to accommodate the development of new housing along this section of Riverside Road.

The amendment proposes to change the Future Land Use designation of approximately 2.2 hectares from Future Residential Area (FRA) to Residential.

The Municipal Plan Amendment No. 2, 2014 And Development Regulations Amendment No. 3, 2014 come into effect on the day that this notice is published in *The Newfoundland and Labrador Gazette*. Anyone who wishes to inspect a copy of the Municipal Plan Amendment No. 2, 2014 And Development Regulations Amendment No. 3, 2014 may do so at the Town Office, during normal working hours.

TOWN OF GLOVERTOWN
Laura Moss, Town Clerk

Sept 19

EMBALMERS AND FUNERAL DIRECTORS ACT, 2008

NOTICE

The following is a list of names and addresses of Funeral Directors to whom licenses and permits have been issued under the *Embalmers and Funeral Directors Act, 2008*, SNL2008 cE-7.1, as amended.

Embalmers and Funeral Directors Board of NL - Customer List as of 08/26/2014

Name	Street 1	City	Province	Postal Code
Anderson, Lisa D.	53 Blueberry Crescent	Carbonear	NL	A1Y 1A6
Anderson, Michelle	Suite 166	St. John's	NL	A1A 3R1
Andrews, Darrin W.	89 Brown Avenue	Grand Falls-Windsor	NL	A2A 2L2
Barrett, R. David	41 Angels Road	Paradise	NL	A1L 2C5
Barrett, Robert R.	328 Hamilton Avenue	St. John's	NL	A1E 1J9
Barry, Ann Marie	P. O. Box 267	Placentia	NL	A0B 2Y0
Broughton, Kenneth	P. O. Box 14	Brigus	NL	A0A 1K0
Brown, Holly	8 Dunfield Place	Corner Brook, NL	NL	A2H 1T7
Bulgin, Andrea	P. O. Box 552	Twillingate	NL	A0G 4M0
Burry, Amy	P. O. Box 18	Boyd's Cove	NL	A0G 1G0
Carnell, Geoffrey	6 Pringle Place	St. John's	NL	A1B 1A3
Chaulk, David	P. O. Box 230	Embree	NL	A0G 2A0
Colbourne, Coreen	P. O. Box 788	Lewisporte	NL	A0G 3A0

THE NEWFOUNDLAND AND LABRADOR GAZETTE
September 19, 2014

Coombs, Andrew	P. O. Box 267	Placentia	NL	A0B 2Y0
Coombs, Jeanette	P. O. Box 267	Placentia	NL	A0B 2Y0
Cumben, Thomas R.	P. O. Box 717	Grand Bank	NL	A0E 1W0
Fahey, Esther	General Delivery	Fermeuse	NL	A0A 2G0
Fahey, Gerald K.	General Delivery	Fermeuse	NL	A0A 2G0
Farr, Harley K.	P. O. Box 95	Carter's Cove	NL	A0G 1P0
Farr, Kimberly D.	P. O. Box 53	Carter's Cove	NL	A0G 1P0
Fillatre, Laura	28 Hann Crescent	Corner Brook	NL	A2H 0B2
Fillatre, Levinia	P. O. Box 753	Corner Brook	NL	A2H 6Z1
Fillatre, Margaret	218 Curling Street	Corner Brook	NL	A2H 3J1
Gibbons, Donald	P. O. Box 424	St. Mary's	NL	A0B 3B0
Gibbons, George	P. O. Box 424	St. Mary's	NL	A0B 3B0
Gibbons, Jean M.	P. O. Box 424	St. Mary's	NL	A0B 3B0
Goodyear, Sheila	27 Greenwood Avenue	Grand Falls-Windsor	NL	A2A 1S7
Green, Ruby S.	7 A Kennedy Place	Grand Falls-Windsor	NL	A2B 0A2
Green, Trevor D.	7 Kennedy Place	Grand Falls-Windsor	NL	A2B 0A2
Green, Winston N.	7A Kennedy Place	Grand Falls-Windsor	NL	A2B 0A2
Hancock, Gail	6 Noel's Place	Springdale	NL	A0J 1T0
Hansford, Christopher	P. O. Box 11	Hickman's Harbour	NL	A0C 1P0
Hansford, Kimberley	P. O. Box 11	Hickman's Harbour	NL	A0C 1P0
Hickey, Jamie N.	P. O. Box 309	Holyrood	NL	A0A 2R0
Hiscock, Gordon	211 Blackmarsh Road	St. John's	NL	A1E 4S9
Holloway, Ruby	P. O. Box 42	Whitbourne	NL	A0B 3K0
Hopkins, Carl	P. O. Box 71	Old Perlican	NL	A0A 3G0
Hopkins, William	P. O. Box 262	Old Perlican	NL	A0A 3G0
Hoskins, Debi	P. O. Box 189	Bishop's Falls	NL	A0H 1C0
Hulan, Amanda H.	12 Discovery Place	Carbonear	NL	A1Y 1A1
Kelly, Florence M.	34 Smith's Road	Corner Brook	NL	A2H 1V6
Lomond, Geoffrey	P. O. Box 1505	Marystown	NL	A0E 2M0
Maher, Gerard	P. O. Box 151	Freshwater	NL	A0B 1W0
Mercer, Wayne	28 Eltero Park	Bishop's Falls	NL	A0H 1C0
Moore, Clarence L. E.	P. O. Box 429	Clarke's Beach	NL	A0A 1W0
Moore, Lisa	29 Hill Avenue	Clarke's Beach	NL	A0A 1W0
Moore, Sheila	P. O. Box 429	Clarke's Beach	NL	A0A 1W0
Moore--Reid, Clarice	P. O. Box 429	Clarke's Beach	NL	A0A 1W0
Morgan, Chris	18 Boyles Crescent	Springdale	NL	A0J 1T0
Newport, Ellison	P. O. Box 147	Seal Cove	NL	A0H 2G0
Noel, Jonathan	6 Circular Road	Springdale	NL	A0J 1T0
Oram, Dawson	23 Bayview Heights	Glovertown	NL	A0G 2L0
Oram, Elizabeth	23 Bayview Heights	Glovertown	NL	A0G 2L0
Oram, Karen P.	P. O. Box 184	Glovertown	NL	A0G 2L0
Oram, Paul	P. O. Box 184	Glovertown	NL	A0G 2L0
Parsons, Brenda D.	63 North Main Street	Deer Lake	NL	A8A 1X1
Peach, Milton L.	82 Water Street	Carbonear	NL	A1Y 1B1
Pendergast, John F.	P. O. Box 215	Wabana-Bell Island	NL	A0A 4H0
Pritchett, David	P. O. Box 796	Gambo	NL	A0G 1T0
Roche, Edward	34 Bristol Street	St. John's	NL	A1A 2E6
Russell, Amanda	P. O. Box 586	Stephenville Crossing	NL	A0N 2C0
Russell, Marsha Ann	4 Park Avenue	Stephenville	NL	A2N 1G1
Short, Justin	P. O. Box 216	Port-Aux-Basques	NL	A0M 1C0
Slade, Elizabeth	P. O. Box 324	Carbonear	NL	A1Y 1B7
Slade, Krista	P. O. Box 324	Carbonear	NL	A1Y 1B7
Slade, Ross	P. O. Box 58	Western Bay	NL	A0A 4J0
Spencer, Mark D.	79 Sunset Blvd.	Massey Drive	NL	A2H 0B3
Stockley, Catherine J.	P. O. Box 775	Gambo	NL	A0G 1T0
Tucker, Twyla	P. O. Box 4	Bunyan's Cove	NL	A0C 1E0
Vanzuylen, Sherrie	6A Barnes Road, Unit 2	Shoal Harbour	NL	A5A 4C5
Vardy, Arthur R.	P. O. Box 69	Hickman's Harbour	NL	A0C 1P0
Vardy, Doris	P. O. Box 69	Hickman's Harbour	NL	A0C 1P0
Warren, G. Paul	P. O. Box 194	Dildo	NL	A0B 1P0
Warren, Gerald	P. O. Box 123	Dildo	NL	A0B 1P0
Warren, Wynn Anne	P. O. Box 194	Dildo	NL	A0B 1P0
Wimbleton--Butt, Lisa	P. O. Box 331	La Scie	NL	A0K 3M0
Wiseman, Tammy	P. O. Box 1534	Marystown	NL	A0E 2M0

Number of Customers listed: 77 - Generated On: 09/09/2014

Sept 19

The following is a list of names and addresses of Embalmers and Funeral Directors to whom licenses and permits have been issued under the *Embalmers and Funeral Directors Act, 2008*, SNL2008 cE-7.1, as amended.

Embalmers and Funeral Directors Board of NL - Customer List as of 08/26/2014.

Name	Street 1	City	Province	Postal Code
Abbott, Brent	P. O. Box 39	Wesleyville	NL	A0G 4R0
Anderson, John F.	Piperstock Hill	Torbay	NL	A1K 1A4
Anderson, John N.	39 Spratt Place	St. John's	NL	A1E 4M1
Anderson, Robert	5 Roehampton Place	Mount Pearl	NL	A1N 4M9
Andrews, Jessica M.	11 Diana Road	St. John's	NL	A1B 1H7
Avery, Edison F.	14 Fleming Road	Goulds	NL	A1S 1E7
Barrett, Colin	2 Callaghan Place	Paradise	NL	A1L 0C4
Barrett, Susan	2 Callaghan Place	Paradise	NL	A1L 0C4
Barrington, Martin	78 Bonaventure Avenue	St. John's	NL	A1C 3Z6
Belbin, Giselle	275 Thorburn Road	St. John's	NL	A1B 4R1
Bishop, Derek	24 Hazelwood Crescent	St. John's	NL	A1E 6B3
Blundon, Lorraine	P. O. Box 429	Burin Bay Arm	NL	A0E 1G0
Boyd, Rhonda	P. O. Box 486	Lewisporte	NL	A0G 3A0
Broughton, Wayne S.	P. O. Box 361	Brigus	NL	A0A 1K0
Burke, Amy	9 Valleyview Road	St. John's	NL	A1G 1M9
Cole, Lewis	23 Hoyles Road	Carbonear	NL	A1Y 1A8
Collier, Sarah	34 Main Street	Grand Falls-Windsor	NL	A2B 1H8
Coombs, Francis	P. O. Box 267	Placentia	NL	A0B 2Y0
Coombs, Thomas	P. O. Box 267	Placentia	NL	A0B 2Y0
Crann, Shawn	P. O. Box 920	Happy Valley-Goose Bay	NL	A0P 1C0
Cunning, Baden	62 Petley Street	Corner Brook	NL	A2H 3H1
Currie, Jennifer	P. O. Box 27, Site 7	Margaree	NL	A0M 1C0
Doody, Lisa Marie	17 Sycamore Place	Mount Pearl	NL	A1N 1P4
Dooley, Barry J.		Victoria	NL	A0A 4G0
Dowden, Peter	37 Albany Street	St. John's	NL	A1E 3C6
Dunphy, Barbara	P. O. Box 56	Holyrood	NL	A0A 2R0
Dunphy, Kenneth	P. O. Box 56	Holyrood	NL	A0A 2R0
Eddy, Roger W.	22 Imogene Crescent	Paradise	NL	A1L 1H4
Everard , Annette	9 Craig Newman Way	Conception Bay South	NL	A1X 0C2
Fahey, Gerald P.	General Delivery	Fermeuse	NL	A0A 2G0
Fahey, Justin	General Delivery	Fermeuse	NL	A0A 2G0
Farr, Thomas S.	P. O. Box 53	Carter's Cove	NL	A0G 1P0
Fewer, Desmond	58 Boyle Street	St. John's	NL	A1E 2H6
Fewer, Robert	8 Wilson Avenue	Clarenville	NL	A5A 2B6
Fillatre, A. Maxwell	P. O. Box 231	Corner Brook	NL	A2H 6C9
Fillatre, Ernest	P. O. Box 329	Stephenville Crossing	NL	A0N 2C0
Fillatre, Keith W.	218 Curling Street	Corner Brook	NL	A2H 3J1
Fitzgerald, Matthew	45 St. Andrews Avenue	Mount Pearl	NL	A1N 1E3
Flaherty, Joseph	P. O. Box 265	Marysvale	NL	A0A 2Z0
Flood, Raymond F.	53 Sutherland Drive	Grand Falls-Windsor	NL	A2A 2G2
Foster, Mark	P. O. Box 442	Triton	NL	A0J 1V0
Gillingham, Gurrin A.	Site 5, P. O. Box 37	Appleton	NL	A0G 2K0
Goodyear, Kenneth	19 Boyles Crescent	Springdale	NL	A0J 1T0
Goodyear, Michael T.	27 Greenwood Avenue	Grand Falls-Windsor	NL	A2A 1S7
Green, Andrew	P. O. Box 18	Hant's Harbour	NL	A0B 1Y0
Green, Donald	P. O. Box 18	Hant's Harbour	NL	A0B 1Y0
Green, Terry P.	57 Peddle Drive	Grand Falls-Windsor	NL	A2B 1K8
Hickey, Andrew	P. O. Box 419	Holyrood	NL	A0A 2R0
Hickey, James	P. O. Box 419	Holyrood	NL	A0A 2R0
Hill--Scammell, Nova Lee	P. O. Box 309	Lewisporte	NL	A0G 3A0
Hodder, Jeffrey	P. O. Box 436	Burin Bay Arm	NL	A0E 1G0
Holloway, Garry	P. O. Box 42	Whitbourne	NL	A0B 3K0
Holloway, Mindy	39A Hancock's Road	Deer Lake	NL	A8A 1M4
Hoskins, Paul L.	P. O. Box 189	Bishop's Falls	NL	A0H 1C0
Howe, Jonathan	6 Nathaniel Drive	Torbay	NL	A1K 1M5
Hulan, Jason	12 Discovery Place	Carbonear	NL	A1Y 1A1
Hynes, Sheldon	P. O. Box 265	St. Alban's	NL	A0H 2E0
Ivany, Maxine	P. O. Box 940	Port Aux Basques	NL	A0M 1C0
Jacobs, Gary	P. O. Box 878	Lewisporte	NL	A0G 3A0
Kean-Simms, Paula	15 Russell Street	Gander	NL	A1V 0A1
Keats, Garry	P. O. Box 13, RR 1	Joe Batt's Arm	NL	A0G 2X0
Kieley, Darren	61 Circular Road	Grand Falls-Windsor	NL	A2A 1B4
Lane, Erin	40 Blue Jay Place	Paradise	NL	A1L 0Z1
Legge, Eric (Rick)	P. O. Box 940	Port Aux Basques	NL	A0M 1C0

THE NEWFOUNDLAND AND LABRADOR GAZETTE
September 19, 2014

Lewis, Carol Ann	P. O. Box 419	Holyrood	NL	A0A 2R0
Lewis, Marcia	P. O. Box 419	Holyrood	NL	A0A 2R0
Loveridge, Gerald	P. O. Box 189	Twillingate	NL	A0G 4M0
Loveridge, Julianne	P. O. Box 189	Twillingate	NL	A0G 4M0
Lynch, Wayne	P. O. Box 197	Spaniard's Bay	NL	A0A 3X0
Maher, Paul	P. O. Box 290	Freshwater	NL	A0B 1W0
Maidment, James	7 Chamberlain St.	Grand Falls-Windsor	NL	A2A 2G5
Mauger, Siobhan	P. O. Box 652	St. Anthony	NL	A0K 4S0
McCormick, Paula	22 Whiteford Place	St. John's	NL	A1B 2A4
McGrath, Michelle	55 Westport Drive	Paradise	NL	A1L 0R6
Mercer, Michael	P. O. Box 129	Shearstown	NL	A0A 3V0
Mooney, David	67 Ohio Drive	Stephenville	NL	A2N 2V3
Moore, Alice D.	P. O. Box 337	Clarke's Beach	NL	A0A 1W0
Moore, Carl R.	P. O. Box 429	Clarke's Beach	NL	A0A 1W0
Mouland, Shane	44 Brodle Street	St. John's	NL	A1N 0B5
Mouland, Tracy	P. O. Box 95	Lumsden	NL	A0G 3E0
Nippard, Lee	P. O. Box 763	St. Anthony	NL	A0K 4S0
Nippard, Nathan	15A Massey Drive	Corner Brook	NL	A2H 6Z9
Noble, Teena	P. O. Box 8, Stn. B	Happy Valley-Goose Bay	NL	A0P 1E0
Noel, Kenneth E.	2 LeMarchant Street	Carbonear	NL	A1Y 1A9
Parsons, David E.	63 North Main Street	Deer Lake	NL	A8A 1X1
Parsons, Debra	8 Jean D'Arc Place	Clarenville	NL	A5A 1J4
Parsons, Dwayne S.	P. O. Box 3761, RR # 2	Corner Brook	NL	A2H 6B9
Pender, Jennifer	P. O. Box 270	New-Wes-Valley	NL	A0G 4R0
Penney, John F.	P. O. Box 385	Labrador City	NL	A2V 2K6
Pritchett, Kevin D.	P. O. Box 796	Gambo	NL	A0G 1T0
Quinton, Rodney	3021 Flora Crescent	Labrador City	NL	A2V 2T5
Roberts, Renetta	46 Legion Road	Conception Bay South	NL	A1X 6Y6
Ruelokke, Beatrice	107 Legion Road	Conception Bay South	NL	A1X 6Y3
Russell, Keith R.	P. O. Box 586	Stephenville	NL	A0N 2C0
Ryan, Joseph	P. O. Box 306	Bay Bulls	NL	A0A 1C0
Sampson, Jonathan	95 Circular Road	Grand Falls-Windsor	NL	A2A 1B6
Skiffington, Pamela	11 Maple Avenue	Clarenville	NL	A5A 1L1
Slade, Edward	P. O. Box 324	Carbonear	NL	A1Y 1B7
Slade--Ryan, Katherine	P. O. Box 324	Carbonear	NL	A1Y 1B6
Spencer, Creston	P. O. Box 248	Harbour Breton	NL	A0H 1P0
Spracklin, Danielle	7A Sheppard Street	Grand Falls-Windsor	NL	A2A 2S1
Stack, Wanda	40 Cedar Brae Crescent	St. John's	NL	A1B 4R1
Strathie, Cluny H.	P. O. Box 305	Bonavista	NL	A0C 1B0
Strathie, Robert R.	P. O. Box 305	Bonavista	NL	A0C 1B0
Thomas, Tracey	P. O. Box 198	Heart's Content	NL	A0B 1Z0
Tizzard, Shawn	63 Northmain Street	Deer Lake	NL	A8A 1X1
Trenchard, Barry	P. O. Box 429	Clarke's Beach	NL	A0A 1W0
Wade, Daryl R.	P. O. Box 228	Gambo	NL	A0G 1T0
Warren, Craig C.	P. O. Box 277	Dildo	NL	A0B 1P0
Warren, Shirley G.	P. O. Box 123	Dildo	NL	A0B 1P0
Weeks, William J.	P. O. Box 730	Springdale	NL	A0J 1T0
Whalen, Krista	66 Cormack Drive	Clarenville	NL	A5A 1C6
White, Connie E.	P. O. Box 539	Gander	NL	A1V 2E1
Wimbleton, Eddie	P. O. Box 582	Baie Verte	NL	A0K 1B0
Wiseman, Terry	P. O. Box 1534	Marystown	NL	A0E 2M0
Woolfrey, Gordon J. G.	Site 1, Box 3051	Lewisporte	NL	A0G 3A0
Woolfrey, Gordon R.	P. O. Box 121	Lewisporte	NL	A0G 3A0
Woolfrey, Robert	P. O. Box 100	Lewisporte	NL	A0G 3A0

Number of Customers listed: 118 - Generated On: 09/09/2014

Sept 19

The following is a list of names and addresses of Funeral Homes to whom licenses and permits have been issued under the *Embalmers and Funeral Directors Act, 2008*, SNL2008 cE-7.1, as amended.

Embalmers and Funeral Directors Board of NL - Customer List as of 08/26/2014

Name	Street 1	City	Province	Postal Code
Barrett's Funeral Home Mt. Pearl	73 Commonwealth Avenue	Mount Pearl	NL	A1N 1W7
Barrett's Funeral Home St. John's	328 Hamilton Avenue	St. John's	NL	A1E 1J9
Blundon's Funeral Home Clarenville	8 Harbour Drive	Clarenville	NL	A5A 4H6
Botwood Funeral Home	147 Commonwealth Drive	Botwood	NL	A0H 1E0

THE NEWFOUNDLAND AND LABRADOR GAZETTE
September 19, 2014

Broughton's Funeral Home	P. O. Box 14	Brigus	NL	A0A 1K0
Carnell's Funeral Home Ltd.	P. O. Box 8567	St. John's	NL	A1B 3P2
Caul's Funeral Home — St. John's	P. O. Box 2117	St. John's	NL	A1C 5R6
Caul's Funeral Home — Torbay	P. O. Box 2117	St. John's	NL	A1C 5R6
Central Funeral Home — Bishop's Falls	45 Union Street	Grand Falls-Windsor	NL	A2A 2C9
Central Funeral Home — Grand Falls - Windsor	45 Union Street	Grand Falls-Windsor	NL	A2A 2C9
Central Funeral Home — Springdale	45 Union Street	Grand Falls-Windsor	NL	A2A 2C9
Conway's Funeral Home	P. O. Box 193	Conception Harbour	NL	A0A 1Z0
Coomb's Funeral Home	P. O. Box 267	Placentia	NL	A0B 2Y0
Country Haven Funeral Home	167 Country Road	Corner Brook	NL	A2H 4M5
Don Gibbons Ltd. Funeral Home	P. O. Box 424	St. Mary's	NL	A0B 3B0
Dunphy's Funeral Home	P. O. Box 56	Holyrood	NL	A0A 2R0
East Haven Funeral Home Inc.	P. O. Box 940	Port Aux Basques	NL	A0M 1C0
Fahey's Funeral Home — Fermeuse	General Delivery	Fermeuse	NL	A0A 2G1
Fahey's Funeral Home — Trepassay	General Delivery	Fermeuse	NL	A0A 2G1
Families First Funeral Home	P. O. Box 309	Lewisporte	NL	A0G 3A0
Fewer's Funeral Home — Arnolds Cove	299 Memorial Drive	Clarenville	NL	A5A 1R6
Fewer's Funeral Home — Clarenville	299 Memorial Drive	Clarenville	NL	A5A 1R6
Fewer's Funeral Home — Little Heart's Ease	299 Memorial Drive	Clarenville	NL	A5A 1R6
Fewer's Funeral Home — Lethbridge	299 Memorial Drive	Clarenville	NL	A5A 1R6
Fillatre's Funeral Home — Corner Br	218 Curling Street	Corner Brook	NL	A2H 3J4
Fillatre's Funeral Home — Deer Lake	218 Curling Street	Corner Brook	NL	A2H 3J4
Fillatre's Funeral Home — HV/GB	218 Curling Street	Corner Brook	NL	A2H 3J4
Fillatre's Funeral Home — Mark's Ave	218 Curling Street	Corner Brook	NL	A2H 3J4
Fillatre's Stephenville Crossing	218 Curling Street	Corner Brook	NL	A2H 3J4
Fillatre's, Port Au Choix	218 Curling Street	Corner Brook	NL	A2H 3J4
Fillatre's, Port Aux Basques	218 Curling Street	Corner Brook	NL	A2H 3J4
Fogo Island Funeral Home	P.O. Box 13	Joe Batts Arm	NL	A0G 2X0
Green Bay Funeral Home	P. O. Box 730	Springdale	NL	A0J 1T0
Green's Funeral Home	P. O. Box 138	Winterton	NL	A0B 3M0
Hickey's Funeral Home — Kelligrews	P. O. Box 419	Holyrood	NL	A0A 2R0
Holloway's Funeral Home	P. O. Box 42	Whitbourne	NL	A0B 3K0
Hopkin's Funeral Home — Northern Bay	P. O. Box 262	Old Perlican	NL	A0A 3G0
Hopkin's Funeral Home — Old Perlican	P. O. Box 262	Old Perlican	NL	A0A 3G0
Hoskins' Funeral Home — Bishop's Falls	P. O. Box 189	Bishop's Falls	NL	A0H 1C0
Hoskins' Funeral Home — Botwood	P. O. Box 189	Bishop's Falls	NL	A0H 1C0
Hoskins' Funeral Home — Grand Falls-Windsor	P. O. Box 189	Bishop's Falls	NL	A0H 1C0
Hynes' Coast of Bays Funeral Home	P. O. Box 44	St. Alban's	NL	A0H 2E0
Isles Funeral Home Ltd.	P. O. Box 189	Twillingate	NL	A0G 4M0
James J. Hickey Memorial Funeral Home	P. O. Box 419	Holyrood	NL	A0A 2R0
K. M. Fillatre Funeral Home — Roddickton	P. O. Box 604	St. Anthony	NL	A0K 4S0
K.M. Fillatre Funeral Home — St. Anthony	P. O. Box 604	St. Anthony	NL	A0K 4S0
Kittiwake Funeral Home	P. O. Box 39	Wesleyville	NL	A0G 4R0
Kittiwake Funeral Home — Musgrave Harbour	P. O. Box 39	Wesleyville	NL	A0G 4R0
Lynch's Funeral Home Ltd. — Spaniard's Bay	P. O. Box 14	Spaniard's Bay	NL	A0A 3X0
Maher's Funeral Home	P. O. Box 290	Freshwater	NL	A0B 1W0
Moore's Funeral Home	P. O. Box 429	Clarke's Beach	NL	A0A 1W0
Moore's Funeral Home — Bay Roberts	P. O. Box 429	Clarke's Beach	NL	A0A 1W0
New World Island Funeral Home	P. O. Box 360	Summerford	NL	A0G 4E0
Noel's Funeral Home — Carbonear	106 Water Street	Carbonear	NL	A1Y 1A9
Noel's Funeral Home — Harbour Grace	P. O. Box 1001	Harbour Grace	NL	A0A 2M0
Noel's Funeral Home — Western Bay	P. O. Box 1001	Harbour Grace	NL	A0A 2M0
Oram's Funeral Home	P. O. Box 10	Glovertown	NL	A0G 2L0
Oram's Funeral Home — Dover	P. O. Box 10	Glovertown	NL	A0G 2L0
Parson's Funeral Home	63 North Main Street	Deer Lake	NL	A8A 1X1
Pendergast's Funeral Home	P. O. Box 906	Bell Island	NL	A0A 4H0
Peninsula Funeral Home	P. O. Box 548	Marystown	NL	A0E 2M0
Penney's Funeral Home	P. O. Box 385	Labrador City	NL	A2V 2K6
Pritchett's Funeral Home	P. O. Box 796	Gambo	NL	A0G 1T0
Random Island Funeral Home	P. O. Box 69	Hickman's Harbour	NL	A0C 1P0
Russell's Funeral Home — Pr. Rupert	P. O. Box 463	Stephenville	NL	A2N 2Z5
Russell's Funeral Home — Stephenville Crossing	1 Station Road	Stephenville Crossing	NL	A2N 2Y9
Ryan's Funeral Services Ltd.	P. O. Box 306	Bay Bulls	NL	A0A 1C0
Serenity Funeral Home — Burin	P. O. Box 429	Burin Bay Arm	NL	A0E 1G0
Sincerely Yours Funeral Home Limited	P. O. Box 270	New-Wes-Valley	NL	A0G 4R0
Sincerely Yours — Centreville	421 Pickersgill Blvd	Centreville	NL	A0G 4P0
Slade's Funeral Home — Bay Roberts	P. O. Box 324	Carbonear	NL	A1Y 1B7
Slade's Funeral Home — Upper Island Cove	P. O. Box 324	Carbonear	NL	A1Y 1B7
Slade's Memorial Services Ltd.	P. O. Box 324	Carbonear	NL	A1Y 1B7
Spencer's Funeral Home	P. O. Box 248	Harbour Breton	NL	A0H 1P0

Spencer's Funeral Home — St. Alban's	P. O. Box 248	Harbour Breton	NL	A0H 1P0
Squire's Funeral Home	P. O. Box 10	Glovertown	NL	A0G 2L0
Stacey's Funeral Home — Gander	P. O. Box 539	Gander	NL	A1V 2E1
Stacey's Funeral Home — Carmanville	P. O. Box 539	Gander	NL	A1V 2E1
Strathie's Funeral Home	P. O. Box 305	Bonavista	NL	A0C 1B0
Strathie's Funeral Home — Catalina	P. O. Box 305	Bonavista	NL	A0C 1B0
Sunset Memorial Funeral Home	10 Bayley Street	Grand Falls-Windsor	NL	A2A 2T5
Warren's Funeral Home — Dildo	P. O. Box 123	Dildo	NL	A0B 1P0
Warren's Funeral Home — Gr. Bank	P.O. Box 309	Grand Bank	NL	A0E 1W0
Wimbleton's Funeral Home	22 Main Street	Baie Verte	NL	A0K 1B0
Wiseman's Funeral Homes — Burin	P. O. Box 548	Marystown	NL	A0E 2M0
Wiseman's Funeral Homes — Fortune	P. O. Box 548	Marystown	NL	A0E 2M0
Wiseman's Funeral Homes — Marystown	P. O. Box 548	Marystown	NL	A0E 2M0
Woolfrey, Gordon Funeral Home	P. O. Box 340	Lewisporte	NL	A0G 3A0

Number of Customers listed: 88 - Generated On: 09/09/2014

EMBALMERS AND FUNERAL DIRECTORS BOARD
OF NEWFOUNDLAND AND LABRADOR
Valda Pitcher, Office Secretary

Sept 19

QUIETING OF TITLES ACT

**2014 06G 0126
IN THE SUPREME COURT OF
NEWFOUNDLAND AND LABRADOR
TRIAL DIVISION (General)**

DATED AT Clarenville, in the Province of Newfoundland
and Labrador, this 24th day of July, 2014.

MILLS PITTMAN & TWYNE
Solicitors for the Applicant
PER: Corwin Mills, Q.C.

NOTICE OF APPLICATION under the *Quieting of Titles Act*, RSNL1990 cQ-3.

ADDRESS FOR SERVICE:
111 Manitoba Drive
Suite 201
Clarenville, NL A5A 1K2

Tel: (709) 466-2641
Fax: (709) 466-7109

SCHEDULE "A"

NOTICE IS HEREBY given to all parties that KAY PRINCE, of Southern Bay, in the District of Bonavista South, in the Province of Newfoundland and Labrador, has applied to the Supreme Court, Trial Division, Grand Bank, to have title to all that piece or parcel of property situate at Princeton, in the Province of Newfoundland and Labrador, which property is more particularly described in Schedule "A" hereto annexed and shown in Schedule "B" hereto annexed.

Kay Prince
Job No, 03-121
Princeton, NL

All bearings aforementioned, for which KAY PRINCE claims to be the owner investigated and for a Declaration that she is the absolute owner in fee simple in possession and the said KAY PRINCE has been ordered to public Notice of Application as required by the above named Act.

ALL THAT piece or parcel of land situate at Princeton, in the Electoral District of Bonavista South, in the Province of Newfoundland and Labrador, abutted and bounded as follows, that is to say:

All persons having title adverse to the said title claimed by the said KAY PRINCE shall file in the Registry of the Supreme Court of Newfoundland and Labrador, Trial Division, Grand Bank, particulars of such adverse claim and serve the same together with an Affidavit verifying same on the undersigned Solicitors for the Petitioner on or before the 19th day of October, 2014, after which date no party having any claim shall be permitted to file the same or to be heard except by special leave of the Court and subject to such conditions as the Court may deem just.

BEGINNING at a point, the said point being distant (65.975) metres, as measured on a bearing of south (67) degrees (27) minutes (37) seconds east from Coordinate Monument No. 834064, which Monument is on a bearing of south (78) degrees (33) minutes (32) seconds east to Coordinate Monument No. 86G6070;

THENCE running by a Local Road, south (36) degrees (55) minutes (32) seconds east, a distance of (31.747) metres;

THENCE running by land claimed by Boyd Ivany, south (39) degrees (04) minutes (08) seconds west, a distance of (53.136) metres;

All such adverse claims shall be investigated then in such manner as the Supreme Court of Newfoundland, Trial Division, Grand Bank, may direct.

THENCE running by land claimed by Frances Prince, south (87) degrees (32) minutes (58) seconds west, a distance of (18.200) metres;

THENCE north (50) degrees (13) minutes (22) seconds west, a distance of (6.665) metres;

THENCE running by land occupied by Bessie Prince, north (21) degrees (50) minutes (29) seconds east, a distance of (37.571) metres;

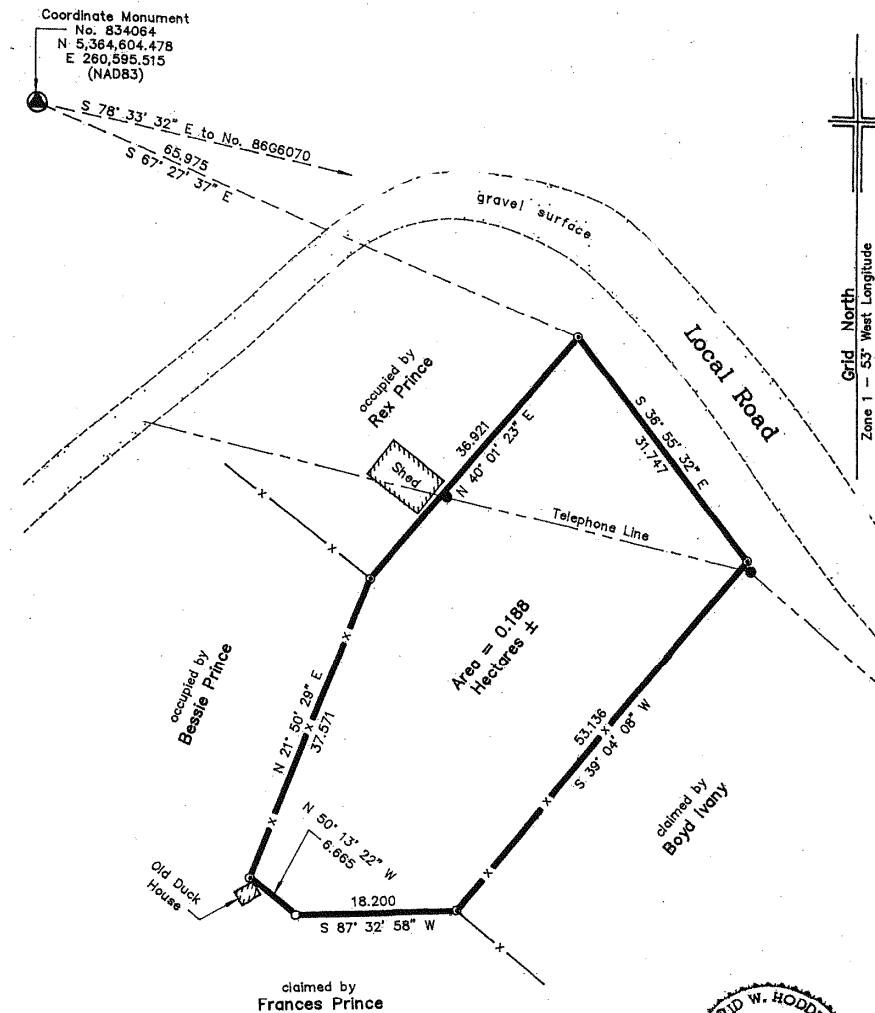
THENCE running by land occupied by Rex Prince, north (40) degrees (01) minute (23) seconds east, a distance of (36.921) metres, more or less, to the point of beginning and

being more particularly shown and delineated on the attached plan;

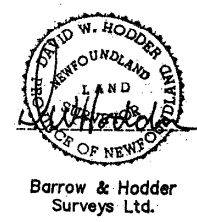
CONTAINING an area of (0.188) hectares, more or less;

ALL BEARINGS being referred to the meridian of (53) degrees west longitude of the Three Degree Transverse Mercator Projection. (NAD83)

Copyright "2003". D.W.Hodder. NLS
Barrow & Hodder Surveys Ltd.



- Note:
- fd = Found
O = Iron Pin
⊙ = Capped Iron Pin
-x- = Fence Line
 - Copyright 2003, D. W. Hodder, NLS
Barrow & Hodder Surveys Ltd.



PLAN SHOWING LAND SURVEYED FOR
Kay Prince
Princeton, NL

TRUSTEE ACT
ESTATE NOTICE

IN THE MATTER of the Estate of DORIS GWENDOLYN RENDELL, late of St. John's, in the Province of Newfoundland and Labrador, Widow, Deceased.

All persons claiming to be creditors of, or who have any claims or demands upon or affecting the Estate of the above named DORIS GWENDOLYN RENDELL, Deceased, are hereby requested to send particulars of same, in writing, duly attested, to the undersigned Solicitors for the Executrix of the Estate of the said DORIS GWENDOLYN RENDELL, on or before the 6th day of October, 2014, after which date the Executrix will proceed to distribute the said Estate, having regard only to the claims of which she then shall have had notice.

DATED at St. John's, Newfoundland and Labrador, this 5th day of September, 2014.

BENSON BUFFETT PLC INC.
Solicitors for the Executrix
PER: J. David B. Baird, QC

ADDRESS FOR SERVICE:
Suite 900, Atlantic Place
215 Water Street
P.O. Box 1538
St. John's, NL A1C 5N8

Sept 5 & 19



THE NEWFOUNDLAND AND LABRADOR GAZETTE

PART II

**SUBORDINATE LEGISLATION
FILED UNDER THE STATUTES AND SUBORDINATE LEGISLATION ACT**

Vol. 89

ST. JOHN'S, FRIDAY, SEPTEMBER 19, 2014

No. 38

**NEWFOUNDLAND AND LABRADOR
REGULATION**

NLR 78/14



NEWFOUNDLAND AND LABRADOR REGULATION 78/14

Labour Standards Regulations (Amendment)
under the
Labour Standards Act
(O.C. 2014-245)

(Filed September 16, 2014)

Under the authority of sections 26 and 27 of the *Labour Standards Act*, the Lieutenant-Governor in Council makes the following regulations.

Dated at St. John's, September 15, 2014.

Julia Mullaley
Clerk of the Executive Council

REGULATIONS

Analysis

- | | |
|----------------------------|-----------------------------|
| 1. S.8 R&S
Minimum wage | 2. S.9 R&S
Overtime wage |
| | 3. Commencement |

CNLR 781/96
as amended

1. Section 8 of the *Labour Standards Regulations* is repealed and the following substituted:

Minimum wage

8. (1) Effective October 1, 2014, every employer shall pay to every employee a wage rate of not less than \$10.25 per hour.

(2) Effective October 1, 2015, every employer shall pay to every employee a wage rate of not less than \$10.50 per hour.

2. Section 9 of the regulations is repealed and the following substituted:

Overtime wage

9. (1) Effective October 1, 2014, for the purpose of section 25 of the Act, overtime wages shall be paid at a rate of not less than \$15.38 an hour.

(2) Effective October 1, 2015, for the purpose of section 25 of the Act, overtime wages shall be paid at a rate of not less than \$15.75 an hour.

(3) Section 25 of the Act does not apply to a person employed

(a) in the planting, cultivating and harvesting of farm produce other than the production of fruit and vegetables in greenhouse and nursery operations;

(b) in the raising of livestock; or

(c) as a live-in housekeeper or baby-sitter where there is an arrangement by which that employee is entitled to time off with pay for hours worked in excess of 40 hours per week.

Commencement

3. These regulations come into force on October 1, 2014.

©Queen's Printer

Index

PART I

Embalmers and Funeral Directors Act, 2008 – Notice.....	339
Mineral Act – Notice	335
Quieting of Titles Act – Notice.....	344
Trustee Act – Notice.....	346
Urban and Rural Planning Act, 2000 – Notices	339

PART II

CONTINUING INDEX OF SUBORDINATE LEGISLATION

Title of Act and Subordinate Legislation made thereunder	CNLR or NL Reg.	Amendment	NL Gazette Date & Page No.
Labour Standards Act			
Labour Standards Regulations (Amdt.)	NLR 78/14	Amends CNLR 781/96 S.8 R&S S.9 R&S	Sept 19/14 p. 625

The Newfoundland and Labrador Gazette is published from the Office of the Queen's Printer.

Copy for publication must be received by **Friday, 4:30 p.m.**, seven days before publication date to ensure inclusion in next issue.

Advertisements must be submitted in either PDF format or as a MSWord file. When this is not possible, advertisements must be either typewritten or printed legibly, separate from covering letter. Number of insertions required must be stated and the names of all signing officers typewritten or printed.

Copy may be mailed to the address below, faxed to (709) 729-1900 or emailed to queensprinter@gov.nl.ca.

Advertising rates are available upon request. Subscription rate for *The Newfoundland and Labrador Gazette* is \$125.00 for 52 weeks plus applicable tax (\$131.25). Weekly issues of \$3.00 per copy, plus tax payable in advance.

All cheques, money orders, etc., should be made payable to THE NEWFOUNDLAND EXCHEQUER ACCOUNT and all correspondence should be addressed to: Office of the Queen's Printer, P. O. Box 8700, Ground Floor, East Block, Confederation Building, St. John's, NL A1B 4J6. Telephone (709) 729-3649. Fax: (709) 729-1900.

Web Site: <http://www.servicenl.gov.nl.ca/printer/index.html>

**Place your order by contacting:
Office of the Queen's Printer
Confederation Building, East Block
St. John's, NL A1B 4J6
Telephone: (709) 729-3649 Fax: (709) 729-1900
email: queensprinter@gov.nl.ca**

**Government Information Product
Publication Rate Mail
G.S.T. # R107442683**

All requests for Subscription and Legislation MUST be prepaid.