



THE NEWFOUNDLAND AND LABRADOR GAZETTE

PART I

PUBLISHED BY AUTHORITY

Vol. 80

ST. JOHN'S, FRIDAY, SEPTEMBER 30, 2005

No. 39

URBAN AND RURAL PLANNING ACT

NOTICE OF REGISTRATION CITY OF MOUNT PEARL DEVELOPMENT REGULATIONS AMENDMENT NO. 152, 2005

TAKE NOTICE that the City of Mount Pearl Development Regulations Amendment Number 152, 2005, adopted by Council on the 6th day of September, 2005, has been registered by the Minister of Municipal and Provincial Affairs.

In general terms, the purpose of Development Regulations Amendment Number 152, 2005 is to amend Schedule A to revise the definition of Bed & Breakfast.

The Mount Pearl Development Regulations Amendment Number 152, 2005 comes into effect on the day that this notice is published in *The Newfoundland & Labrador Gazette*. Anyone who wishes to inspect a copy of this Amendment may do so at the Mount Pearl City Hall, 3 Centennial Street during normal working hours.

CITY OF MOUNT PEARL
Per: Gerard Lewis, Chief Administrative Officer

Sept 30

NOTICE OF REGISTRATION CITY OF MOUNT PEARL DEVELOPMENT REGULATIONS AMENDMENT NO. 153, 2005

TAKE NOTICE that the City of Mount Pearl Development Regulations Amendment Number 153, 2005, adopted by Council on the 6th day of September, 2005, has been registered by the Minister of Municipal and Provincial Affairs.

In general terms, the purpose of Development Regulations Amendment Number 153, 2005 is to amend Schedule A to add a definition for Retail Warehouse, and to amend Schedule D, Off-Street Parking Requirements, to add requirements for Retail Warehouse and to amend the requirements for Shopping Centre.

The Mount Pearl Development Regulations Amendment Number 153, 2005 comes into effect on the day that this notice is published in *The Newfoundland & Labrador Gazette*. Anyone who wishes to inspect a copy of this Amendment may do so at the Mount Pearl City Hall, 3 Centennial Street during normal working hours.

CITY OF MOUNT PEARL
Per: Gerard Lewis, Chief Administrative Officer

Sept 30

**TRUSTEE ACT
ESTATE NOTICE**

**IN THE MATTER OF the Estate of Lynette Chaffey,
late of the Town of St. David's, in the Province of
Newfoundland and Labrador, deceased.**

All persons claiming to be creditors of or who have any claims or demands upon or affecting the Estate of Lynette Chaffey, also known as Lenetta Chaffey, late of the Town of St. David's, in the Province of Newfoundland and Labrador, deceased, are hereby requested to send particulars thereof in writing duly attested to the undersigned solicitors for the Administratrix of the Estate of the said deceased on or before the 31st day of October, 2005, after which date the said Administratrix will proceed to distribute the said Estate having regard only to the claims of which she then shall have notice.

BROTHERS & BURDEN
Solicitors for the Estate of Lynette Chaffey
Per: Lorilee A. Sharpe

ADDRESS FOR SERVICE:
89 West Valley Road
Corner Brook, NL
A2H 2X4

Sept 30

QUIETING OF TITLES ACT

2005 01T 8699

**IN THE SUPREME COURT OF
NEWFOUNDLAND AND LABRADOR
TRIAL DIVISION**

IN THE MATTER OF the *Quieting of Titles Act*, Chapter Q-3 of the *Revised Statutes of Newfoundland and Labrador*, RSN 1990

AND IN THE MATTER OF all that piece or parcel of land situate and being South of Shoal Bay Road, and East of Park Lane, Goulds, St. John's, in the Province of Newfoundland and Labrador, Canada, and being collectively known as 98-106 and 114 Shoal Bay Road, Goulds, St. John's, NL

AND IN THE MATTER OF an application of Robert Rideout, of Goulds, St. John's, in the Province of Newfoundland and Labrador.

NOTICE OF APPLICATION UNDER THE *QUIETING OF TITLES ACT* RSN 1990, c. Q-3, AS AMENDED

Notice is hereby given to all parties that Robert Rideout has applied to the Supreme Court of Newfoundland and Labrador, Trial Division, in the Judicial Centre of St. John's, to have title to ALL THAT piece or parcel of land

situate and being to the south of Shoal Bay Road and to the east of Park Lane, Goulds, St. John's, in the Province of Newfoundland and Labrador, Canada, and collectively known as 98-106 and 114 Shoal Bay Road, Goulds, St. John's, NL, and being more particularly described in the Schedule marked "A" annexed hereto, of which parcel he claims on his own behalf to be the owner, investigated and for a declaration that he is the absolute owner thereof. All persons having a claim adverse to this title claimed by the Petitioner shall file in the Registry of the Supreme Court, Trial Division, Judicial Centre of St. John's, at the Court House building, Duckworth Street, St. John's, Newfoundland and Labrador, Canada, A1C 5M3, particulars of such adverse claim and serve the same together with an Affidavit verifying the same on the undersigned Solicitor for the Petitioner on or before the 28th day of October, 2005, after which date no party having any claim shall be permitted to file the same or to be heard except by special leave of the Court and subject to such conditions as the Court may deem just. All such adverse claims shall then be investigated in such manner as the Supreme Court of Newfoundland and Labrador, Trial Division, may direct.

Dated at St. John's, Newfoundland and Labrador, this 23rd day of September, 2005.

LEARMONTH, DUNNE & CLARKE
Solicitors for the Petitioner
Per: Joseph F. Boulos

ADDRESS FOR SERVICE:
22 Church Hill
PO Box 700
St. John's, NL
A1C 5L4

Sept. 30

Schedule "A"

Boundary Description

Civic # 114 Shoal Bay Road, Goulds, St. John's, Newfoundland and Labrador.

BEGINNING at a point, said point having the following NAD83 coordinates in Zone 1 of the Transverse Mercator Projection as modified for the Province of Newfoundland N 5 255 068.333 and E 322 853.019;

THENCE along the grid bearing of N 15° 56' 40" W for a distance of 221.778 metres;

THENCE along the arc of a curve having a radius of 238.750 metres, on a chord distance of 26.477 metres, on a grid bearing of N 12° 45' 58" W;

THENCE along the grid bearing of N 09° 35' 16" W for a distance of 47.434 metres;

THENCE along the arc of a curve having a radius of 6.000 metres, on a chord distance of 9.653 metres, on a grid bearing of N 51° 33' 11" E;

THENCE along the grid bearing of S 67° 18' 23" E for a distance of 69.247 metres;

THENCE along the grid bearing of S 58° 48' 22" E for a distance of 20.825 metres;

THENCE along the grid bearing of S 49° 44' 26" E for a distance of 51.553 metres;

THENCE along the grid bearing of S 13° 18' 57" W for a distance of 75.803 metres;

THENCE along the grid bearing of S 14° 41' 44" W for a distance of 111.670 metres;

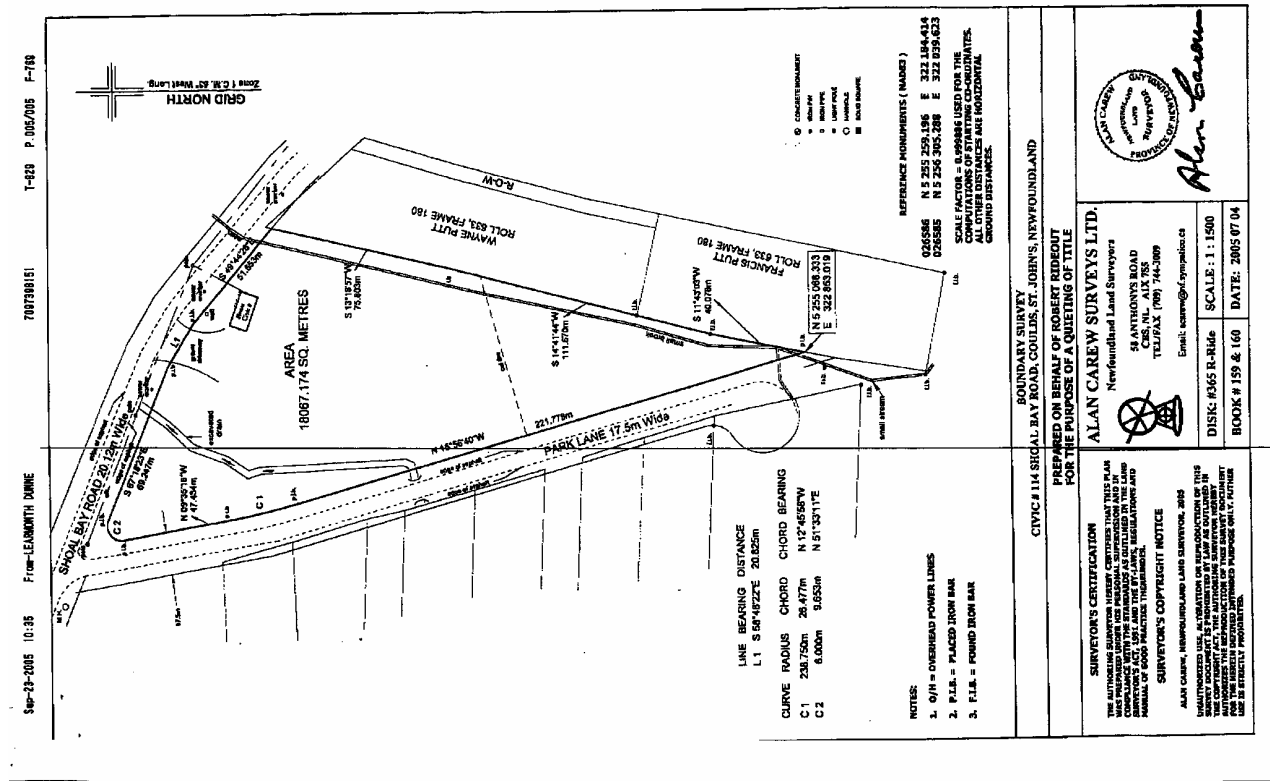
THENCE along the grid bearing of S 11° 43' 03" W for a distance of 40.078 metres to the point of beginning;

All bearings are Grid North NAD83 in Zone 1 of the Transverse Mercator Projection as modified for the Province of Newfoundland;

The above described piece or parcel of land contains an area of 18067.174 square metres, more or less, and is more particularly shown on the plan hereto attached dated 2005 07 04.

Note: There is a small brook running through the said Lot inside the southeastern boundary as shown. There is also an excavated drain extending through the said Lot as shown. There is a cut line extending through the said Lot as shown. There is a house and a gravel driveway erected on the said parcel of land as shown.

This description and accompanying plan are integral parts necessary to adequately reflect the legal boundary of the subject property and therefore cannot be separated.



CORPORATIONS ACT
NOTICE - SECTION 341(2)

NOTICE IS HEREBY GIVEN pursuant to section 341(2) of the *Corporations Act* that the Registrar, under authority of s.341(1), has decided to dissolve the following corporations effective 120 days from September 23, 2005:

| Number | Company Name | | |
|---------------|--|-------|--|
| 36093 | 10466 Newfoundland Ltd. | 11194 | Barachois Development Association |
| 36227 | 10477 Nfld. Inc. | 36724 | Baricor Minerals Inc |
| 36502 | 10486 NEWFOUNDLAND INC. | 8701 | BARTLETT, LINEHAN, ASSOCIATES LIMITED |
| 36588 | 10492 NFLD LTD. | 36678 | Bay St. George Progress Club Inc. |
| 36715 | 10495 NFLD LTD. | 7218 | Bay St. George Senior Citizens Home |
| 37056 | 10505 NEWFOUNDLAND LIMITED | 36767 | Bay-Lin Enterprises Ltd. |
| 37058 | 10506 NEWFOUNDLAND LIMITED | 36320 | BEACH FISHERIES LTD. |
| 37126 | 10510 Newfoundland Limited | 4859 | Beck Construction Limited |
| 37272 | 10518 NFLD. LTD. | 6374 | Becker Contractors Limited |
| 4881 | 10569 Newfoundland Limited | 36432 | BELCAN TRADING INC. |
| 36276 | 4 SEASONS MOTORSPORTS & RENTALS LTD. | 23032 | BERGS LIMITED |
| 18109 | A. Mitchell and Son Limited | 36211 | Beverage Industry Association of Newfoundland and Labrador Inc. |
| 36178 | ABATRAD HOLDINGS INC. | 18765 | Bishop's Falls Senior Citizens Housing Committee |
| 24535 | ABBOTT'S CONTRACTORS LIMITED | 23683 | BJANES ENTERPRISES INC. |
| 37505 | ABC HOLDINGS INC. | 36508 | Black Tickle Fishermens Committee Incorporated |
| 36779 | Accomp Business Services Inc. | 17578 | BLUE FOAM III LIMITED |
| 13958 | Advanced Concepts Engineering Limited | 37488 | BMN Gas & Convenience Ltd. |
| 36257 | AFTERMARKET EQUIPMENT SERVICES LTD. | 37377 | Body Gear Enterprises inc |
| 36404 | AIR TORNGAT INC. | 21145 | BOTWOOD AREA ASSOCIATION OF COMMUNITY LIVING INC. |
| 37683 | ALEXANDER'S CONVENIENCE INC. | 37460 | Browne's Convenience Ltd. |
| 36154 | Altus Investments Inc. | 36233 | BRS Inspections Ltd. |
| 14025 | ANCHOR ENTERPRISES INC. | 37536 | BRUNO'S FINE FOODS INC. |
| 22697 | ART'S AUTO CENTRE LIMITED | 24402 | Brush-Up Painting Inc. |
| 7365 | Artistic Hairstyling Limited | 36693 | BRYZAK CORPORATION |
| 14168 | Astro Construction Limited | 9885 | BURIN PENINSULA DRYCLEANERS LIMITED |
| 37235 | ATLANTIC CANADA TRUCKING LIMITED | 36208 | BusinessTel Ltd. |
| 36874 | ATLANTIC CARPET CARE LTD. | 7414 | Butler's Grocery Limited |
| 37365 | ATLANTIC SEAWEED FARMS LTD. | 36976 | BYRNE'S AUTO REPAIR LTD. |
| 37626 | Aubern Enterprises Ltd. | 5352 | C & G ENTERPRISES LIMITED |
| 36453 | AURORA OFFSHORE INC. | 20329 | C.S.C. Holdings Limited |
| 18945 | AUSTIN ADVERTISING (1985) LIMITED | 7876 | C.W. FLEMING LIMITED |
| 17928 | AUTOMOTIVE SERVICES LIMITED | 21531 | Cable Holdings Limited |
| 37629 | AVALON AQUACULTURE INC. | 37680 | Cabot Shipping Holdings Limited |
| 36640 | Avalon Audiology Services Inc. | 36076 | CAD SOLUTIONS NFLD. INC. |
| 36457 | Avalon Convenience Stores Ltd. | 11075 | CADILLAC CONSTRUCTION COMPANY LIMITED |
| 36382 | AVALON OFFSHORE ALLIANCE INC. | 36566 | Canadian Associates for Training and Education International, Inc. |
| 14183 | Avalon Roofing Limited | 36244 | Canadian International Scholastic Investment Group Inc. |
| 37123 | Avatuk Adventures Ltd. | 35997 | CANARY OILFIELD LTD. |
| 36836 | B & C Drycleaners (1996) Limited | 21867 | CAPE RAY RECREATION ASSOCIATION INC. |
| 20385 | B & C MUSSEL GROWERS LIMITED | 37109 | Carey & Sons Enterprises Ltd |
| 19169 | B & E TRUCKING LIMITED | 21246 | Carter Agencies Ltd. |
| 36354 | B. & R. Convenience Ltd. | 36909 | CASTLE ROCK RESTAURANT LTD. |
| 6693 | B. & S. Electrical Limited | 36503 | CBS Photo Studio Ltd. |
| 19057 | B.A. TRUCKING LIMITED | 36892 | CD Holdings Inc |
| 5350 | Baceo Limited | 36925 | CELEBRITY PROMOTIONS NFLD 1996 INC. |
| 36990 | Baine Harbour Fishermen's Committee Incorporated | 9868 | Centennial Arena Association |
| 17225 | Baltimore Realities Limited | 22451 | Central Fabric & Crafts Limited |
| | | 37213 | Central Newfoundland Tire Ltd. |
| | | 36280 | CENTURY 21 Bay Realty Inc. |
| | | 23873 | CFA Plazas (Torbay) Limited |
| | | 20469 | CFA Plazas Limited |

THE NEWFOUNDLAND AND LABRADOR
September 30, 2005

| | | | |
|-------|--|-------|--|
| 23051 | CFP BUILDERS LIMITED | 37677 | EKWETE CONSULTING INC |
| 36644 | Cheng Xin International, Inc. | 37654 | ELDER-CARE LIMITED |
| 19342 | Churchill Enterprises Limited | 36493 | Endico Trucking & Contracting Ltd |
| 37214 | Civil Prosecution Services Inc. | 21922 | Eringlo Corporation |
| 19413 | CLEAN-CARE LIMITED | 37212 | Ernest Hardy Limited |
| 36694 | COACHING COUNCIL OF NEWFOUNDLAND AND LABRADOR INC. | 11074 | Exploits Valley Young Men's Christian Association |
| 36906 | COASTAL DIVING INTERNATIONAL INC. | 36202 | FAMILY PAK LTD. |
| 2340 | Col-Dor Limited | 22796 | FELKER'S SALES & SERVICES LTD. |
| 36616 | Colin Enterprise Ltd. | 36885 | FIRE RISK LTD. |
| 36757 | Collins Gas Bar and Convenience Ltd. | 36649 | First Labrador Resources Ltd. |
| 20488 | Combdon's Logging and Lumber Limited | 37454 | FLYNN MARITIME INCORPORATED |
| 36550 | Communication Devices & Equipment Inc. | 36196 | FORTUNE ATLANTIC LIMITED |
| 36179 | Community Economic Development Strategies Inc. | 37326 | FOUR SEASONS RENTALS INC. |
| 36759 | COMPETITIVE CONTRACTING LIMITED | 9128 | FRANK BROPHY LIMITED |
| 17795 | COMPLETE DRUG MART LIMITED | 14387 | FRED KEEPING & SON LIMITED |
| 4505 | COMPLETE RENT-ALLS, LIMITED | 37049 | FRESHWATER COMMUNITY IMPROVEMENT INC. |
| 37321 | ComTech Computer Repair Ltd | 36872 | FUSHELL INCORPORATED |
| 36816 | CONCORD INDUSTRIES INC | 37717 | Future Technology Information Services Inc. |
| 36229 | Condon Industries Ltd. | 36336 | FUTURES PLUS INC. |
| 37185 | CONNOLLY HUMAN RESOURCES INC. | 36828 | G. P. Machinery Inc. |
| 37509 | CONWAY'S PLANT STOP LTD. | 4238 | G.J. Shortall, Limited |
| 13470 | COOMBS BODY & WELDING SHOP LIMITED | 36660 | GARY COOK LTD. |
| 5151 | Corner Brook Minor Hockey Association | 36425 | Gators Swamp Limited |
| 19817 | CORNER CONSTRUCTION Limited | 36664 | Ge Feng Trading Company, Inc. |
| 36509 | CORNET (Community On-Line Resource NETwork) Inc. | 8308 | Gemini Holdings Company Limited |
| 37004 | Corthom Wood Corporation | 36468 | GeoMar Satellite Inc. |
| 37521 | COTTON CREATIONS LIMITED | 36980 | Get Active Inc. |
| 36169 | CoWal Educational Inc. | 35949 | Global Atlantic Inc. |
| 20235 | Cromers Property Limited | 37564 | Globex International Corporation |
| 37348 | Crown Caps & Accesories Inc. | 37279 | Goodies Wholesale Limited |
| 23250 | Cyberspace Design Limited | 37384 | GOOSE BAY MAINTENANCE INC |
| 36459 | D & D Engraving Limited | 5285 | Gordon Holdings Limited |
| 17665 | D. J. HEALEY & SON LIMITED | 36282 | GOSPEL MUSIC CELEBRATION INCORPORATED |
| 37539 | DANNY'S DINER LIMITED | 11956 | Gosse's Nursing Home Limited |
| 36043 | Dawe's Snowclearing & Landscaping Ltd. | 36342 | Grand Dynasty Restaurant & Lounge Limited |
| 36883 | DealerNet Inc. | 15398 | GRANT'S SUPERETTE LIMITED |
| 19209 | DENCO LIMITED | 19455 | Great Northern Construction (1985) Limited |
| 36194 | Development Council Holdings Limited | 37115 | GREMLIN ENTERPRISES LTD. |
| 37284 | DMC Restorations Inc. | 12909 | Grenfell Investments Limited |
| 9727 | Domestic Cleaners Limited | 37102 | Gros Morne Ventures Ltd. |
| 10073 | Dominion Paving Limited | 19244 | H. & J. LUMBER LIMITED |
| 36488 | DOYLE'S ATLANTIC ENTERPRISES LIMITED | 18658 | H. & R. Wholesale Limited |
| 37239 | Dr. P. Wenig Ltd. | 37369 | HABITAT HOLDINGS INC. |
| 10845 | DRAKE'S SERVICE STATION LIMITED | 37252 | HALCO ENTERPRISE LTD. |
| 36623 | Dylan Construction Ltd. | 22100 | HALLEY, HUNT HOLDINGS LIMITED |
| 37018 | DYMO INTERNATIONAL LIMITED | 36497 | HAMILTON SYSTEMS & SALES LIMITED |
| 36806 | E. L. and L. Fishermen's Committee Inc. | 36891 | Happy Days Diner Limited |
| 18869 | E. M. & F. CONSTRUCTION LIMITED | 37457 | Harding Holdings Limited |
| 37332 | E.W.H. INVESTMENTS LIMITED | 21044 | Heatherton-Highlands Recreation Assoc. Inc. |
| 36890 | East Coast Watersports Ltd. | 20441 | Helitactics Limited |
| 37266 | Eat Rite Deli Inc. | 37584 | Hide-Away Park Inc. |
| 37168 | Ebony Granite Limited | 36494 | Highlander Exploration Services Limited |
| 36594 | ECCO ENTERPRISES INC. | 18001 | HILLYARD ENTERPRISES LIMITED |
| 13625 | Econo Home Heat Limited | 8924 | Home Decor Limited |

THE NEWFOUNDLAND AND LABRADOR
September 30, 2005

| | | | |
|-------|---|-------|---|
| 36771 | HOPEDALE STATUS OF WOMEN COUNCIL INC. | 36448 | MARTIAL ASSOCIATIONS OF NEWFOUNDLAND INC. |
| 23544 | Hospitality Inc. | 16241 | Martineau and Sons Limited |
| 15918 | Humber Valley Cemetery Association | 37246 | Master Enterprises Limited |
| 37456 | Hurley's Funeral Home Inc. | 36595 | MATA Enterprises Ltd. |
| 37417 | IMAGE CONSULTANTS INC. | 10701 | McNeil's Transport Limited |
| 20674 | Innu Development Corporation | 23870 | MENKHOR LIMITED |
| 6097 | Investment Dealer Co. Limited | 36348 | Mid-Atlantic Tours Ltd. |
| 35945 | Invitations To Imagine Inc. | 36381 | Mobile 1 Inc. |
| 36750 | J & R Paving Ltd. | 36945 | MOFFATT MOVING & STORAGE (NEWFOUNDLAND) LIMITED |
| 36714 | J. P. FOREST PRODUCTS LTD. | | Mor-Tare Transport Limited |
| 37101 | J.D. Tires Ltd. | 17238 | MOTORSPORT DIRECT INCORPORATED |
| 36511 | J.M.B. Enterprises Company Limited | 37479 | |
| 36430 | JCK HOLDINGS LTD. | | Mount Pleasant Developers Inc. |
| 37721 | JCM Deep Sea Fishing Consultants Limited | 37044 | Munn & Oke Limited |
| 24245 | JIM MERCER'S WELDING LIMITED | 4943 | Mushuau Air Limited |
| 36600 | Joh & Col Enterprises Ltd. | 36507 | N. J. ROBBINS CONSULTANTS INC. |
| 36483 | JOYCO ENTERPRISES LIMITED | 37064 | N.F.L.D. Clearance Ltd |
| 24417 | K & C AUTO BODY LTD. | 36738 | N.F.L.D. HOME CONTRACTING CO. LTD. |
| 17647 | K & R VARIETY LIMITED | 36572 | |
| 23445 | KANAKI INDUSTRIES INC. | | Nain Slipway and Boathouse Committee Inc. |
| 37684 | Karen's Hair Studio Inc. | 37476 | |
| 37462 | KDM CONSTRUCTION LIMITED | | Nain Storage Inc. |
| 37571 | KELLIGREWS MASSAGE & HYDROTHERAPY INC. | 36948 | Networth Management Inc. |
| | | 36380 | NEVIK ENTERPRISES LIMITED |
| 36646 | Kenton International, Inc. | 36489 | New Founde Masters Inc. |
| 14278 | Kilbride Auto Body (1981) Limited | 37357 | New Ground Holdings Ltd. |
| 23987 | Killiney Farm Inc. | 36337 | New Image Restorations Inc. |
| 24145 | KINETTE CLUB OF GRAND BANK INC. | 36300 | New Ocean Enterprises Ltd. |
| 36744 | King's Cove Historical Society Inc. | 37303 | NEWFOUND TECHNOLOGIES INC. |
| 36428 | KIRBY CONSTRUCTION INC. | 37019 | Newfoundland & Labrador Arbitration & Mediation Society Inc. |
| 37099 | KITCHENS AND MORE LIMITED | 36847 | Newfoundland & Labrador Paralegal Training Institute Inc. |
| 36900 | L.P. SQUIRES INC. | | Newfoundland and Labrador Association of Municipal Administrators |
| 36275 | La Scie Convenience and Snack Bar Inc. | 36871 | Newfoundland and Labrador Outfitters Association Inc. |
| 13191 | LAB ELECTRIC LIMITED | | Newfoundland Brokerage (1976) Limited |
| 36705 | LABRADOR CITY YOUTH CENTRE INC | 18130 | Newfoundland Driver Training Limited |
| 36185 | LABRADOR HELICOPTERS LTD | | NEWFOUNDLAND INDEPENDENT MOTORCYCLIST ASSOCIATION INC. |
| 37428 | LABRADOR WEST AIRPORT CORPORATION | 36203 | NEWFOUNDLAND MARKETING INTERNATIONAL INVESTMENTS INC. |
| | | | Newfoundland Marketing International Trading Inc. |
| 22924 | LAURIE ZON FISHERIES LIMITED | 9268 | NEWFOUNDLAND MOVER LIMITED |
| 9914 | LAW'S RESTAURANTS LIMITED | 37166 | Newfoundland Sea Farms Inc. |
| 16068 | Layden's Trucking Limited | 36547 | Newfoundland Sport Fishing Ltd. |
| 37372 | LEEVOY'S Custom Computer Services Inc. | | Newland Limited |
| 12942 | Leo's Variety Limited | 37550 | NewPhase Enterprises Ltd. |
| 12769 | Lewisporte Mall Merchants Association | | NEWTOR TRADING INC. |
| 37270 | Lifetime Systems Ltd. | 37551 | Nfld. & Lab. Fund Raising Promo Inc. |
| 18512 | Linda Murphy Interior Design Limited | | NIKAT HOLDINGS LIMITED |
| 37024 | Lite-Hearted Inc. | 36835 | NikStar Resturants Co. Ltd. |
| 37162 | Lord God Father Almighty, Creator & King of Heaven & Earth Community Health Care Services Corp. | 36774 | NMI/SINO Worldwide Economic Interest Group Inc. |
| | | 36039 | Northern Lights Fisheries Inc. |
| 37570 | M & I Enterprises Inc. | 17126 | NORTHERN LIGHTS SALES LIMITED |
| 19293 | M. & J. FISHERIES COMPANY LIMITED | 36981 | Northland Associates Limited |
| 37523 | M. & P. Convenience Limited | 37247 | Northlight Photographic (82) Limited |
| 16714 | M. E. P. Services Limited | 37615 | |
| 37124 | M.D.W. Enterprises Ltd. | 37286 | |
| 37065 | M.L. White Enterprises Ltd. | 36478 | |
| 36788 | M.T.K. Pizza Ltd. | 36242 | |
| 36692 | Main St. Financial Services Group (Nfld.) INC. | 36487 | |
| | | 23119 | |
| 8420 | Major Building Supplies Limited | 9029 | |
| | | 15810 | |

THE NEWFOUNDLAND AND LABRADOR
September 30, 2005

| | | | |
|-------|--|-------|--|
| 11096 | Notre Dame Club | 36991 | Red Harbour Fishermen's Committee Incorporated |
| 36074 | O'Brien Oilfield Properties Ltd. | | |
| 16297 | O'Neill Holdings Limited | 24414 | Red Indian Lake Ground Search Team Inc. |
| 37147 | OCEANCREST SEAFOODS INC. | 36091 | Red Rover Inc. |
| 36427 | OLIVE BRANCH MUSIC COMPANY CANADA INC. | 37281 | REDLAND ELECTRIC LTD. |
| 7224 | OLIVEGROVE LIMITED | 22166 | Renedessa's Limited |
| 13947 | One Stop Convenience Stores Limited | 37003 | Renovation Plus Incorporated |
| 36485 | Osmond Tree Services Ltd. | 21130 | REPROGRAPHICS LIMITED |
| 37306 | Our Place Campers Assoc. Incorporated | 37395 | RESIDUAL HOLDINGS LIMITED |
| 24213 | P & P Siding Systems Ltd. | 37403 | Rice Bros. Ltd. |
| 37471 | P.H.J. ENTERPRISES INC. | 3816 | RICHARD & B.A. RYAN (NFLD) LIMITED |
| 36265 | P.L. Food Services Inc. | 21727 | Richard Seypka & Associates Limited |
| 10050 | Pab Limited | 21842 | RIGOLET RADIO SOCIETY INCORPORATED |
| 36848 | Paralegal Society of Newfoundland and Labrador Inc. | 36815 | RIVER BEND COUNTRY INNS INC. |
| 8961 | PAT'S SERVICES LIMITED | 37223 | RJ JEWELRY REPAIRS LIMITED |
| 36289 | Patricks Cove Fisheries Gear Shed Committee Incorporated | 36753 | Roche's Auctioneering Services Ltd. |
| 5966 | PATTEN'S SERVICE CENTRE LIMITED | 17662 | Rod's Cabinet Shop Limited |
| 36915 | PAYDIRT DRILLING INC. | 5746 | Roderick Davis & Sons Limited |
| 36285 | PEARLVIEW AUTO SALES LTD. | 21454 | Rols Masonry Ltd. |
| 37013 | Peg's Place Incorporated | 37465 | ROY HUGHES LTD. |
| 17880 | Philpotts Enterprises Ltd. | 37181 | Royal Designs Ltd. |
| 36965 | PICTURE PERFECT ENTERPRISES LIMITED | 36707 | RUBY SILVER INC. |
| 36377 | Pieroway Enterprizes Ltd. | 36310 | Rushoon Fishermen's Committee Incorporated |
| 36378 | Pieroway's Loader Services Ltd. | 12431 | S & D Enterprises Limited |
| 21581 | PiKalujak Fisheries Limited | 36549 | S. HRISTOS CO. LIMITED |
| 4352 | PIKE ENTERPRISES, LIMITED | 22713 | SAGONA INVESTMENTS LIMITED |
| 22401 | PIKO LIMITED | 36629 | Salmonid Resources Incorporated |
| 36956 | PIONEER MARINE SERVICES LTD. | 36082 | SAMMS INVESTMENTS LIMITED |
| 36199 | PIZZA GREEK INC. | 37150 | Samskip Ltd. |
| 11911 | Placentia West Development Association | 37280 | Sante Fe Trading Company Inc. |
| 37182 | POSTVILLE FISHERMEN'S COMMITTEE INC. | 37238 | Santo Antonio Foods Inc. |
| 22019 | POWELL'S CONVENIENCE STORE LIMITED | 37245 | SATELLITE CITY INC. |
| 36234 | POWER BUILDING CONTRACTORS LTD. | 37255 | SCANA/ALUMA OFFSHORE PARTNERING LIMITED |
| 36639 | Practical Home Holdings Inc. | 22791 | SCANDINAVIAN SHOP LIMITED |
| 36297 | PREMO CONTRACTORS LTD. | 22831 | SEA SONS II LTD. |
| 35966 | PRIMEVAL RESOURCES INC. | 36315 | SEAL COVE FISHERMAN'S COMMITTEE INC. |
| 17015 | PROVINCIAL ELEVATOR SERVICES LIMITED | 37443 | Seanic Canada Inc. |
| 36560 | PROVINCIAL MORTGAGE BROKERS LIMITED | 11858 | SHEARS LIMITED |
| 37304 | PT & W DESIGNS LIMITED | 18684 | SHELSHER HOLDINGS LIMITED |
| 37190 | Punjab Holdings Limited | 36213 | SHORE TAXI LTD |
| 36652 | Qiang Hui (Canada) Ltd. | 36832 | SIGNAL COMMUNICATIONS INC |
| 10023 | Quikmart Limited | 37713 | Simpson Management Inc. |
| 36440 | QUINELLA TRADING INC. | 36723 | SINO/CANADA INTERNATIONAL ECONOMIC INVESTMENT GROUP INC. |
| 21493 | R T POWER & ASSOCIATES LIMITED | 6508 | Skinner Agencies Limited |
| 36335 | R. & S. Convenience Incorporated | 20247 | Skippers Limited |
| 36226 | R. C. TECHNOLOGIES INC | 37199 | SLIMPLICITY WEIGHT LOSS LTD. |
| 36617 | RanRod Investments Limited | 37231 | SMP Ventures Limited |
| 18836 | RAYCO CONSTRUCTION COMPANY LIMITED | 37029 | SNAPS PHOTO LIMITED |
| 36984 | RDC GROUP INC. | 14838 | Snellen Holding Company Limited |
| 19939 | RDS (Canada) Limited | 12788 | South West Coast Historical Society |
| 6643 | RECON LIMITED | 36475 | SPEEDY REAL ESTATE INC |
| | | 36710 | Sport Logo Inc. |
| | | 37706 | St. Bernard's-Jacques Fontaine Community Hall Association Inc. |
| | | 20749 | St. Pius X Parent-Teachers' Association |
| | | 37133 | Standard Electrical Limited |

THE NEWFOUNDLAND AND LABRADOR
September 30, 2005

| | | | |
|-------|---|------------------|---|
| 36482 | Starbright Mobile Welding Ltd. | 37180 | TOUCHE GAMES INC |
| 36200 | STASSIS FOODS INC. | 37050 | Transactional Developers (11) Limited |
| 36761 | Stemark Enterprises Ltd. | 36261 | Transitions In Progress (TIP) Limited |
| 36820 | Stephenville Home Comfort Centre Inc. | 36519 | TRI - CITY CONSULTANTS LIMITED |
| 35936 | STONE HOUSE EATERY & CATERING COMPANY LTD. | 37026 | TRIBAR ENTERPRISES INC. |
| 21844 | STORAGE EAST INCORPORATED | 36643 | TRINITY - CONCEPTION MOBILITY CLUB INC. |
| 18544 | STRICKLAND'S STORE LIMITED | 2384 | Trinity Brick Products Limited |
| 10177 | Studio 2 Limited | 37545 | Trinity Conception Paralegal Corporation |
| 14258 | STYLECHANGE ENTERPRISES LIMITED | 37085 | TRM International Inc. |
| 9304 | Sunrise Industries (Nfld.) Limited | 36661 | U-CAMP LTD. |
| 36647 | Sunshine International Marketing, Inc. | 36637 | ULTRA VISION LTD. |
| 37060 | SUPERIOR FOOD MARKET INC. | 36181 | UNIVERSAL EMBROIDERERS LTD. |
| 19711 | SUPERWOOD LIMITED | 36574 | Universal Fabricators and Erectors Inc. |
| 16058 | Synchro Newfoundland and Labrador Inc. Association, Inc. - L'Association Canadienne de Nage Synchronisee Inc. | 36632 | VALMA'S SPECIALTIES LIMITED |
| 37192 | Systems Technology Group Inc. | 36591 | VERMICO INDUSTRIES INC. |
| 36545 | T & S SERVICES LTD. | 36072 | Vichary Enterprises Ltd. |
| 7412 | T and A Amusements Limited | 36651 | Viking Pets and Supplies Limited |
| 36635 | TAYLOR DEVELOPMENT MANAGEMENT LIMITED | 36554 | Viking Trailblazers Snowmobile Club Inc. |
| 36645 | Tele Lab Incorporated | 37700 | VINCENT VARIETY LTD. |
| 36833 | Temple & Associates Inc. | 37524 | Virginia Video Inc. |
| 37292 | TERRA NOVA AEROTECH LTD. | 36570 | VORTEXT PUBLISHING INC. |
| 10787 | Terra Nova Security Limited | 37105 | VRI VIRTUAL REALITY IMAGING INC. |
| 23264 | TEXTILE PRODUCTS INC | 22397 | WALSH ELECTRICAL LIMITED |
| 5361 | The 1997 Corporation | 37424 | WCS Central Ltd. |
| 37184 | The Candy Shack (1996) Limited | 37422 | WCS Eastern Ltd. |
| 19908 | THE CLOTHES CLOSET LIMITED | 37423 | WCS Grenfell Ltd. |
| 36034 | The Computer Tutor Inc. | 36325 | WEST COAST PHOTO LIMITED |
| 15096 | The Dress-Her Limited | 37574 | WESTERN CONCRETE FLOORS LTD. |
| 37703 | The Fish Shack Limited | 18928 | Wheelchair Sports Association of Newfoundland and Labrador |
| 37503 | The Hair Gallery Ltd. | 36850 | WHITECAP ADVENTURES CORPORATION |
| 14136 | The Horwood Recreation Commission Association | 36498 | Whoppers Trout Farm Inc. |
| 36364 | The Iapetus Marble Company Ltd. | 36232 | WILDFIRE PRODUCTS LTD. |
| 10876 | THE NEWFOUNDLAND TRANSPORT HISTORICAL SOCIETY | 36048 | WILDLIFE SURVEYS INCORPORATED |
| 18613 | The Old Bonaventure Recreation Association | 9666 | William R. Parsons Limited |
| 6068 | THE PLACENTIA AREA HISTORICAL SOCIETY | 36628 | WILLIAM'S HARBOUR FISHERMEN'S COMMITTEE INCORPORATED |
| 16188 | The Royal Newfoundland Constabulary Association | 36312 | Woodfax Ltd. |
| 20990 | The Shoe Shop Limited | 37204 | Y. & C. Property Holdings Limited |
| 37320 | The Southern Post Limited | 36439 | YELLOW DORY INC. |
| 37041 | THE SPORTS PAGE LIMITED | 11637 | Young's Sales & Service Limited |
| 36955 | The Sunflower Cafe & Gallery Ltd. | 24027 | Youngs' Wholesale (1989) Limited |
| 5211A | The West Coast Inter-faith Social Welfare Council | 37634 | ZIGGY PEELGOOD'S ENTERPRISES LIMITED |
| 37388 | THE WOORKS CLUB LIMITED | | |
| 36634 | THUNNUS LURE LTD. | | |
| 36742 | TOTAL SPORTS INC | | |
| | | Total Companies: | 500 |
| | | | DOUGLAS LAING Registrar of Companies |
| | | Sept 30 | |

CHANGE OF NAME ACT

C-8 RSN 1990

**NOTICE OF APPLICATION
FOR CHANGE OF NAME**

NOTICE is hereby given that an application will be made to the Minister of Government Services for a change of name, pursuant to the provisions of the *Change of Name Act*, by me:-

PENNY RAYANN HUNT

of 132 Gerogetown Road, Corner Brook, A2H 3X2, in the Province of Newfoundland and Labrador, as follows:

To change my minor unmarried child's name from

BRADY NICHOLAS HANN
to
BRADY NICHOLAS HUNT

DATED this 19th day of September, 2005.

PENNY HUNT
(Signature of Applicant)

Sept 30

**NOTICE OF APPLICATION
FOR CHANGE OF NAME**

NOTICE is hereby given that an application will be made to the Minister of Government Services for a change of name, pursuant to the provisions of the *Change of Name Act*, by me:-

JEFF JOSEPH CAMMIE

of 26 Carter Avenue, Corner Brook, A2H 6Y9, in the Electoral District of Humber West, in the Province of Newfoundland and Labrador, as follows:

To change my minor unmarried child's name from

MITCHELL NATHAN DANIEL BALDWIN
to
MITCHELL DANIEL CAMMIE

DATED this 20th day of September, 2005.

JEFF CAMMIE
(Signature of Applicant)

Sept 30

**NOTICE OF APPLICATION
FOR CHANGE OF NAME**

NOTICE is hereby given that an application will be made to the Minister of Government Services for a change of name, pursuant to the provisions of the *Change of Name Act*, by me:-

WILLIAM WHITE

of General Delivery, South East Bight, A0E 3B0, in the Province of Newfoundland and Labrador, as follows:

To change my name from

WILLIAM WHITE
to
WILLIAM FRANCIS WHYTE

DATED this 2nd day of September, 2005.

WILLIAM WHITE
(Signature of Applicant)

Sept 30

**NOTICE OF APPLICATION
FOR CHANGE OF NAME**

NOTICE is hereby given that an application will be made to the Minister of Government Services for a change of name, pursuant to the provisions of the *Change of Name Act*, by me:-

TAMMY LOCKYER

of PO Box 306, Arnold's Cove, A0B 1A0, in the Province of Newfoundland and Labrador, as follows:

To change my minor unmarried child's name from

JORDAN GERMAIN TRAVERSE
to
JORDAN GERMAIN LOCKYER

DATED this 7th day of September, 2005.

TAMMY LOCKYER
(Signature of Applicant)

Sept 30

**NOTICE OF APPLICATION
FOR CHANGE OF NAME**

NOTICE is hereby given that an application will be made to the Minister of Government Services for a change of name, pursuant to the provisions of the *Change of Name Act*, by me:-

JEANANN BIGGIN

of Box 154, Port Saunders, A0K 4H0, in the Province of Newfoundland and Labrador, as follows:

To change my minor unmarried child's name from
ASHLYN BRIDGET JOYCE PLOWMAN
to
ASHLYN BRIDGET JOYCE BIGGIN

DATED this 22nd day of September, 2005.

JEANANN BIGGIN
(Signature of Applicant)

Sept 30

**NOTICE OF APPLICATION
FOR CHANGE OF NAME**

NOTICE is hereby given that an application will be made to the Minister of Government Services for a change of name, pursuant to the provisions of the *Change of Name Act*, by me:-

ELVENA FAITH CARROLL

of PO Box 10, RR 3, Margaree – Fox Roost, A0M 1C0, in the Province of Newfoundland and Labrador, as follows:

To change my minor unmarried child's name from
RYAN BUNTER
to
RYAN DANIEL ALVIN CARROLL

DATED this 21st day of September, 2005.

ELVENA CARROLL
(Signature of Applicant)

Sept 30



THE NEWFOUNDLAND AND LABRADOR GAZETTE

PART II

SUBORDINATE LEGISLATION
FILED UNDER THE STATUTES AND SUBORDINATE LEGISLATION ACT

Vol. 80

ST. JOHN'S, FRIDAY, SEPTEMBER 30, 2005

No. 39

NEWFOUNDLAND AND LABRADOR

REGULATIONS

NLR 89/05

NLR 90/05

NLR 91/05



NEWFOUNDLAND AND LABRADOR REGULATION 89/05

Child Care Services Regulations, 2005
under the
Child Care Services Act

(Filed September 23, 2005)

Under the authority of section 16 of the *Child Care Services Act*, the minister makes the following regulations.

Dated at St. John's, September 22, 2005.

John Ottenheimer
Minister of Health and Community Services

REGULATIONS

Analysis

- | | |
|--|---|
| 1. Short title | 14. Service |
| 2. Definitions | 15. Ratios and group sizes |
| 3. Application for agency licence | 16. Family child care |
| 4. Application for centre based child care service licence | 17. Qualifications of operators |
| 5. Application for family child care licence | 18. Home room staff |
| 6. Application for renewal | 19. Family child care qualifications |
| 7. Agency | 20. Child care services consultants |
| 8. Building requirements | 21. Waiver of qualifications |
| 9. Child care service requirements | 22. Equivalency |
| 10. Records | 23. Continuing education |
| 11. Notification of change | 24. Transitional education requirements |
| 12. Transportation | 25. Transitional |
| 13. Inspectors and inspection | 26. New licence required |
| | 27. Transitional: play spaces |

- 28. Day camps
- 29. Repeal
Schedule

Short title

1. These Regulations may be cited as the *Child Care Services Regulations, 2005*.

Definitions

2. In these Regulations

- (a) "Act" means the *Child Care Services Act*;
- (b) "centre based child care" means child care that is provided under the direction and management of an operator;
- (c) "certification" means the certification levels and classifications of levels described in the Schedule;
- (d) "family child care" means the provision of child care by a licensee, or a person who is supervised by an agency, in that licensee's or person's home; and
- (e) "home room" means a separate area in a child care centre that is equipped and supplied with developmentally appropriate material sufficient for the use of the children in the group using that area.

Application for
agency licence

3. (1) A corporation that applies under subsection 7(7) of the Act for a licence to operate an agency shall do so on the form provided for the purpose by the director.

(2) An application for a licence referred to in subsection (1) shall be accompanied by the following documentation and information in support of the application:

- (a) proof of incorporation;
- (b) certificates of conduct from the Royal Newfoundland Constabulary or the Royal Canadian Mounted Police satisfactory to the director for the directors and officers of the corporation who will have contact with children, or the records of children, in a child care service under the supervision of the agency;

- (c) 3 references each satisfactory to the director for the directors and officers of the corporation who will have contact with children, or the records of children, in a child care service under the supervision of the agency;
 - (d) child protection records checks satisfactory to the director for the directors and officers of the corporation who will have contact with children, or the records of children, in a child care service under the supervision of the agency;
 - (e) with respect to directors and officers of the corporation who will have contact with children, a current record of immunization;
 - (f) proof of necessary municipal approvals; and
 - (g) proof of having obtained \$1 million commercial general liability insurance or its equivalent or a statement from an insurer of an intention to provide the insurance.
- (3) An agency shall ensure, as a condition of retaining its licence, that
- (a) its employees and persons providing family child care under its supervision who will have contact with the records of children in a child care service satisfy the requirements imposed on directors and officers under subsection (2);
 - (b) its employees who may have contact with children, in addition to the requirement contained in paragraph (a), provide a current record of immunization; and
 - (c) the persons providing family child care under its supervision, shall, in addition to the requirements contained in paragraphs (a) and (b), provide evidence that they have a current first aid certificate from an organization recognized by the minister as being qualified to give the certificate.
- (4) An application for a licence referred to in subsection (1) shall be accompanied by a program prepared in accordance with the program policy approved by the minister and containing information respecting:

- (a) the duties and responsibilities of officers and employees of the corporation; and
- (b) the supports to be provided to family child care services under the agency's supervision.

(5) It is a condition of the continuance of its agency licence that a corporation shall

- (a) implement its program;
- (b) not change its program; or
- (c) not make changes to its directors or officers who have contact with children, or the records of children, in family child care homes for which the agency is responsible,

without the prior approval of the director.

(6) An agency licence may be issued for up to 3 years.

Application for
centre based child
care service licence

4. (1) A person who applies under subsection 7(1) of the Act for a licence to operate a centre based child care service shall do so on the form provided for the purpose by the director.

(2) An application for a licence referred to in subsection(1) shall be accompanied by the following documentation and information in support of the application:

- (a) where the applicant is
 - (i) a corporation,
 - (A) proof of incorporation,
 - (B) certificates of conduct from the Royal Newfoundland Constabulary or the RCMP satisfactory to the director for the directors and officers of the corporation who will have contact with children or the records of children to whom child care is provided,
 - (C) 3 references each satisfactory to the director for the directors and officers of the corporation who will

have contact with children or the records of children to whom child care is provided,

- (D) child protection records checks satisfactory to the director for the directors and officers of the corporation who will have contact with children, or the records of children, to whom child care is provided,
- (E) with respect to the directors and officers of the corporation who will have contact with children, a current record of immunization, and
- (F) the name of the person who will serve as the operator of the child care service together with proof satisfactory to the director that the person meets the requirements of these regulations to be an operator, or

(ii) not a corporation,

- (A) certificates of conduct from the Royal Newfoundland Constabulary or the RCMP satisfactory to the director for the applicant and, where the applicant is not the operator, the operator, who will have contact with children or the records of children to whom child care is provided,
- (B) 3 references each satisfactory to the director for the applicant and, where the applicant is not the operator, the operator, who will have contact with children or records of children to whom child care is provided,
- (C) child protection records checks satisfactory to the director for the applicant and, where the applicant is not the operator, the operator, who will have contact with children, or the records of children, to whom child care is provided,
- (D) proof that the applicant, where the applicant is the operator, meets the educational and other requirements of these regulations,

- (E) a current record of immunization for the applicant and, where the applicant is not the operator, the operator,
 - (F) with respect to an applicant, and where the applicant is not the operator, the operator, who will be directly involved in caring for children, evidence that he or she has a current first aid certificate from an organization recognized by the minister as being qualified to give the certificate,
 - (G) the name of the person who will serve as the operator if different from the applicant together with proof satisfactory to the director that the person meets the requirements of these regulations to be an operator;
- (b) proof of necessary municipal approvals;
 - (c) proof of having obtained \$1 million commercial general liability insurance or its equivalent or a statement from an insurer of an intention to provide the insurance; and
 - (d) professionally drawn plans showing
 - (i) the area of the building and associated areas where the child care service will be provided,
 - (ii) the home rooms,
 - (iii) the sleep room for infants, if applicable,
 - (iv) washroom facilities,
 - (v) the kitchen location, where one is on site; and
 - (e) certification that there has been compliance with building and outdoor play area standards set by the minister.
- (3) An application for a licence referred to in subsection (1) shall be accompanied by a program prepared in accordance with the program policy approved by the minister and containing information respecting

- (a) the principles on which the program has been developed;
 - (b) equipment;
 - (c) room arrangements;
 - (d) the outdoor play area;
 - (e) the daily routine;
 - (f) play materials description; and
 - (g) policies on how children will be oriented to the service, on health and safety issues, on parental involvement, on the guidance of children's behaviour, on transportation of children, on outings for children and admission to and departure from the service.
- (4) A licensee shall ensure, as a condition of retaining its licence, that its employees
- (a) who will have contact with the records of children in a child care service satisfy the requirements imposed on directors and officers under subsection (2);
 - (b) who will have contact with children but not be directly involved in caring for them, in addition to meeting the requirements of paragraph (a), provide a current record of immunization; and
 - (c) who will be directly involved in caring for children, in addition to meeting the requirements of paragraphs (a) and (b), provide evidence that they have a current first aid certificate from an organization recognized by the minister as being qualified to give the certificate.
- (5) A person who is not an employee of a licensee but who, as a result of an education or training program, or as a result of an assistance program,
- (a) may have contact with the records of children in a child care service;

(b) may have contact with children but will not be directly involved in carrying for children; or

(c) is directly involved in caring for children

shall comply with paragraph (4)(a), (b) or (c) as if the person were an employee of the licensee.

(6) It is a condition of the continuance of a licence referred to in subsection (1)

(a) that a licensee shall not make any changes to its directors or officers who have contact with children, or the records of children, in the child care centre without the prior approval of the director; and

(b) that all modifications and changes made to areas of the building and associated areas where child care is provided have the prior approval of a director.

(7) The appointment by a licensee of an operator is subject to the prior approval of the director.

(8) A licence to provide centre based child care may be issued for up to 3 years.

Application for
family child care
licence

5. (1) A person who applies under subsection 7(1) of the Act for a licence to operate a family child care service shall do so on the form provided for the purpose by the director.

(2) An application for a licence referred to in subsection (1) shall be accompanied by the following documentation and information in support of the application:

(a) certificates of conduct from the Royal Newfoundland Constabulary or the RCMP satisfactory to the director for the applicant and other persons living in the home;

(b) 3 references satisfactory to the director for the applicant;

(c) child protection records checks satisfactory to the director for the applicant and other persons living in the home;

- (d) proof that the applicant meets the educational requirements under these regulations;
- (e) proof of necessary municipal approvals;
- (f) proof of having obtained \$1 million commercial general liability insurance or its equivalent or a statement from an insurer of an intention to provide the insurance;
- (g) a sketch to scale of the home and outdoor play area where the child care will be provided showing the area of the home where the family child care service will be provided; and
- (h) certification there has been compliance with the building and outdoor play area standards set by the minister.

(3) Subsection 4(4) applies to an applicant and other persons living in the home.

(4) A person who intends to live in a home from which a family child care service is operated shall satisfy the requirements of subsections (2) and (3) before he or she begins to live there.

(5) An application for a licence referred to in subsection (1) shall be accompanied by a program prepared in accordance with the program policy approved by the minister and containing information respecting

- (a) the principles on which the program has been developed;
- (b) equipment;
- (c) room arrangements;
- (d) the outdoor play area;
- (e) the daily routine;
- (f) play materials description; and
- (g) policies on how children will be oriented to the service, on health and safety issues, on parental involvement, on the guidance of children's behaviour, on transportation of chil-

dren, on outings for children and admission to and departure from the service.

(6) It is a condition of the continuance of a licence issued under subsection (1) that all modifications and changes made to areas of the building and associated areas where child care is provided have the prior approval of a director.

(7) A licence to provide family child care may be issued for up to 3 years.

Application for
renewal

6. (1) An application for a renewal or variation of a licence shall be on the form provided by the director for the purpose and shall be accompanied by the documentation referred to in the form.

(2) An application for a renewal of a licence shall be made not later than 60 days prior to the expiry of the current licence, but an application for a variation may be made at any time.

Agency

7. (1) An agency shall

- (a) receive applications and approve persons to provide family child care services in accordance with the requirements for licensing a family child care service under these regulations;
- (b) shall supervise family child care services under its control to ensure compliance with the Act and these regulations;
- (c) shall provide supports to family child care services under its supervision; and
- (d) shall appoint a person as a home visitor.

(2) The appointment of a home visitor is subject to the prior approval of the director.

(3) A home visitor shall visit a family child care service at least once a month.

(4) All approved family child care services under the supervision of an agency are subject to the requirements imposed on licensed family child care under these regulations.

Building require-
ments

8. (1) A child care service

- (a) shall, if it is centre based,
 - (i) be located in premises which are not more than one floor above the ground floor and a home room for the care of children aged birth to 24 months shall be at grade level,
 - (ii) have a home room for each group of children attending that centre with floor space of not less than 3.3 square metres per child in that home room, excluding fixed equipment,
 - (iii) have a separate sleep room directly accessible to the home room of children aged from birth to 24 months,
 - (iv) provide diapering stations if licensed for children not of school age,
 - (v) provide washroom facilities which are available for the exclusive use of that child care service and which meet the requirements of the National Building Code (Canada),
 - (vi) if it operates more than 4 hours a session, have access to an outdoor play area on-site, surfaced, enclosed, of a size and equipped in the manner determined by the minister, and
 - (vii) if it operates for 4 or fewer hours a session, have access to an outdoor play area which, if it is on-site, shall conform to the requirements of subparagraph (vi), but if it is not on-site, which is safe and appropriate for the purpose, in the opinion of a director; and
- (b) if it is a family child care service which has an on-site outdoor play area, it shall conform to the requirements of subparagraph (vi), but if it does not have an on-site outdoor play space, then with subparagraph (vii).

(2) A building or a part of a building that has been approved for the operation of a centre based child care service shall not be used for another purpose during the hours of operation of the service.

(3) Where more than one centre based child care service is operated from a building, each service shall fulfil all the requirements of these regulations as if it alone operated from the building.

(4) Where an application is made for a licence by a person who was licensed under the *Day Care and Homemaker Services Act* on June 4, 1999 the person shall comply with the relevant health and life safety standards applicable to that person's application immediately before that date, subject to safety and other standards which the provincial director may impose.

Child care service
requirements

9. (1) A child care service

- (a) shall have a telephone that is in working order;
- (b) shall have a first aid kit which meets the requirements of the Standards and Guidelines for Health in Child Care Settings Manual approved by the minister;
- (c) shall provide and maintain safe play materials, furniture and equipment which is developmentally appropriate and sufficient for the children cared for in the service in conformity with standards established under the *Hazardous Products Act* (Canada);
- (d) shall not allow the use of baby walkers or infant or older children jumping apparatus;
- (e) where it is necessary to administer prescription medication to a child, shall first obtain the written permission of a parent or guardian of the child for the administration of the medication;
- (f) shall administer an over-the-counter medication to a child only as directed by a physician, dentist or nurse practitioner, but a person providing care to a child in a child care service may administer fever-reducing medication to the child with the prior, written consent of the parent or guardian of the child;

- (g) shall keep medication to be administered to a child in a safe, secure and appropriate place as well as the records pertaining to the administration of the medication;
- (h) shall ensure a child being cared for in the child care service is appropriately supervised at all times;
- (i) shall not permit a child to leave the child care service premises with a person who is not that child's parent or legal guardian without the written consent of that parent or legal guardian;
- (j) shall carry out a monthly fire and emergency evacuation drill from the premises in which that child care service is operated;
- (k) shall provide meals to children in accordance with the requirements of the Canada Food Guide to Healthy Eating;
- (l) shall prepare food and ensure food handling and food handling facilities are in accordance with the requirements of the Standards and Guidelines for Health in Child Care Settings Manual approved by the minister;
- (m) shall ensure a child sleeps, is fed and offered food appropriate to the child's stage of development and individual capability;
- (n) shall, daily, provide to the parent or guardian of a child who is less than 24 months of age a written record of the child's eating, sleeping and elimination patterns;
- (o) shall, where a child becomes seriously ill, injured or dies while in the care of a child care service, immediately notify a parent, guardian or other person named under paragraph 10(1)(c) and the director of that illness, injury or death and the notification shall be given by the licensee for that child care service, the operator, provider or an agency which supervises that child care service;
- (p) shall, where a child care service is operated by one person, have the services of a second person who is more than 18

years of age immediately available in case of an emergency;
and

(q) shall implement the program approved for that child care service at the time of being licensed.

(2) Notwithstanding paragraph (q), a program may be changed with the prior approval of the director.

(3) A centre based child care service may only provide child care between the hours of 6:30 a.m. and 8:30 p.m.

Records

10. (1) A child care service shall keep and maintain records with respect to each child at the child care service, including

- (a) the name, address and date of birth of the child;
- (b) the name, home and work address and telephone number of the parent or guardian of the child;
- (c) the name, address and telephone number of a person other than the parent or guardian who may be contacted in the case of an emergency;
- (d) the date of the child's admission into the child care service;
- (e) the date of the child's departure from the child care service;
- (f) the name and address and telephone number of the child's physician;
- (g) a daily register maintained by a person designated for the purpose or child care provider indicating the date of birth of each child and the time of arrival and departure of each child from the child care service premises;
- (h) a current health record;
- (i) an administration of medications record;
- (j) an injury and incident report; and

(k) the other records required to be kept by the Standards and Guidelines for Health in Child Care Settings Manual.

(2) A child care service shall keep and maintain at the service's operating location, and an agency, at the office of the agency,

(a) the most recent fire and health inspection report of the premises where that child care service is located; or

(b) the most recent fire and health inspection report of premises where child care services under the supervision of that agency are carried out;

(c) copies of violation orders and corrective action notices for the current licence period; and

(d) information required to be provided by these regulations about child care operators, providers, employees and other persons.

(3) The records required to be kept by a child care service by this section shall be retained on file at the premises of the child care service or agency to which it relates and that information shall be made available to an inspector upon his or her request for that information.

(4) The parent of a child shall have access to the records of his or her child referred to in paragraphs (1)(a) to (k) and records referred to in paragraphs (2)(a) to (c) upon request.

(5) A person shall not destroy, alter, deface or obliterate an employee, child or other record referred to in this section.

Notification of
change

11. (1) A child care service and an agency shall notify, in writing, a parent or guardian of a child in a service

(a) of a variation, suspension or cancellation of a licence or approval applicable to that child care service;

(b) of the closure or sale of a child care service or agency, not fewer than 2 weeks before that closure or sale, where possible;

- (c) as soon as is practicable after becoming aware of the commencement of an investigation by a director of child, youth and family services, the Royal Newfoundland Constabulary or the Royal Canadian Mounted Police into a matter involving a child cared for in the child care service and an employee or other person associated with the child care service, unless the constabulary, police or the director of child, youth and family services directs otherwise; and
- (d) of conditions imposed upon the renewal of a licence, if considered appropriate by the director.

(2) Where an agency ceases to supervise a family child care service, the agency shall immediately notify a parent or guardian of a child to whom child care is provided.

(3) Where notice is given under this section, confirmation of the notice shall be given to the director.

Transportation

12. (1) Where children are being transported by or on behalf of a child care service, in addition to the driver a person 16 years of age or older shall accompany the children where more than

- (a) 8 children entitled to attend school are being transported;
- (b) 4 children between the ages of 24 and 69 months are being transported; or
- (c) 3 children who are less than 24 months are being transported.

(2) Where the children being transported belong to more than one of the age groups referred to in paragraphs (1)(a) to (c), the age of the youngest of the children determines which of the ratios set by paragraphs (1)(a) to (c) applies.

(3) Notwithstanding subsection (1) or (2), where a child is being transported on a snow vehicle or sled or on the device commonly known as a komatik, the child shall be accompanied by a person 18 years of age or older, in addition to the driver, who shall have the child in sight at all times.

(4) Notwithstanding subsection (1), (2) or (3), a child shall not be left unattended.

(5) Where children in a child care service are being walked to an outside activity away from the child care service premises, there shall be sufficient supervision to ensure that those children are safely and properly escorted to, from and at that activity.

Inspectors and inspection

13. (1) A child care service and an agency shall be inspected by an inspector at least once a year.

(2) An inspector may enter onto an agency at any time or a child care service premises at any time when children are being provided with care on those premises.

(3) An inspector who inspects agencies shall ensure that in a year, at least 10% or 5 of the family child care homes, whichever is greater, operated under the supervision of an agency are inspected.

(4) An inspector shall report annually on each child care service and agency licensed by a director to that director.

Service

14. (1) A violation order or notice of a decision made under subsection 10(2) of the Act shall be personally served on a licensee or operator of a child care service.

(2) Notwithstanding subsection (1), where personal service cannot be effected, service may be made by registered mail to the last known address of the licensee or child care service.

(3) A notification required to be given in writing may be personally served or sent by regular mail to the last known address of the person requiring notice.

Ratios and group sizes

15. (1) The following ratios of staff to children and child group sizes shall apply with respect to child care centres:

| Age of Child | Staff to Child Ratio | Maximum Group Size |
|-----------------|-----------------------|--------------------|
| 0 to 24 months | 1 staff to 3 children | 6 children |
| 24 to 36 months | 1 staff to 5 children | 10 children |

| | | |
|---|------------------------|-------------|
| 36 to 69 months | 1 staff to 8 children | 16 children |
| 57 to 84 months and entitled to attend school | 1 staff to 12 children | 24 children |
| 84 to 155 months | 1 staff to 15 children | 30 children |

(2) In a child care centre

(a) children aged from birth to 12 months shall not be included in a mixed age group; and

(b) notwithstanding subsection (1), in a group of children made up of more than one category of age group as set out in subsection (1), commonly known as a mixed age group of children,

(i) where the group consists of children who are more than 12 months and less than 69 months of age, the age of the youngest child shall determine the staff to child ratio and group size,

(ii) where the group consists of children ages 24 to 84 months, the maximum group size shall be 14 with an adult to child ratio of one to 7, but the group shall not comprise more than 4 children ages 24 to 36 months,

(iii) where the group consists of children ages 36 to 155 months, the maximum group size shall be 16 with an adult to child ratio of one to 8, but the group shall not comprise more than 4 children ages 84 to 155 months, and

(iv) where the group consists of children ages 57 to 155 months, the maximum group size shall be 30 with an adult to child ratio of one to 15, but the group shall not comprise more than 12 children ages 57 to 84 months who are entitled to attend school.

(3) The mixed age grouping required by subsection (2) does not apply during the last hour of operation of a child care service where the children are 24 months or older and there are no more than 5 children in attendance.

(4) For the purpose of determining a ratio under subsection (1) or (2), a child who continues to be placed in an age group beyond, or is moved before, the birthday at which he or she would ordinarily move to another age group because a period of transition is in the best interests of the child, shall be considered as belonging to that age group for a maximum of 3 months.

(5) A person who provides child care at a child care service shall be 18 years of age or older.

(6) When calculating staff to child ratios, only staff who are actually supervising children shall be considered.

(7) Notwithstanding subsection (1), a child care service licensed and operating under the *Day Care and Homemaker Services Act* on the day the Act came into force may have a ratio of one staff person to 6 children for a maximum group size of 12, for children aged 24 to 36 months.

Family child care

16. (1) An applicant for a licence to provide family child care may be licensed to provide care for a maximum of 6 children, the actual number to be determined by

- (a) the ages and needs of the children;
- (b) the number and ages of the applicant's own children who are living in the house;
- (c) the physical environment in which the children will be cared for; and
- (d) the program proposed for the children by the applicant.

(2) Where a person is providing family child care to more than 4 children, no more than 3 children shall be below the age of 36 months and no more than 2 of those 3 children shall be between the ages of birth and 24 months.

(3) Notwithstanding subsections (1) and (2), a person providing family care may provide care to 4 children below the age of 36 months but, in that case, no more than 2 of those children shall be between the ages of birth and 24 months and the maximum number of children to whom the person may provide care is 4.

(4) Notwithstanding subsections (1), (2) and (3), a person providing family child care may provide child care to 3 children between the ages of birth and 24 months, but in that case the person shall not provide care to more than those 3 children at a time.

(5) Where a director believes that the care of children would not be detrimentally affected by doing so, notwithstanding subsections (1) to (4), the director may permit a person providing family child care to provide care to 2 additional children who are entitled to attend school where 2 of the children to whom the person provides care are his or her own children who are not entitled to attend school.

(6) Where a director believes that the care of children would not be detrimentally affected by doing so, the director may permit a person providing family child care to provide care to a seventh child where the care is provided

(a) for no longer than 1.5 hours once a day; or

(b) for a continuous period of 12 hours once a week.

(7) A director shall not give an exemption under subsection (5) and a permission under subsection (6) to a person providing family child care so that the person would have the exemption and the permission at the same time.

(8) Where an exemption is given under subsection (5) or a permission given under subsection (6), the person to whom it is given shall nevertheless comply with subsections (2), (3) and (4).

Qualifications of operators

17. (1) A centre based child care service shall have an operator who directs and manages the operation of that service and an operator shall have

(a) not less than a Level 2 certification in the age range classifications referred to in Schedule A for which the child care centre is licensed; and

(b) 2 or more years of work experience in a licensed child care centre.

(2) One of the years of work experience referred to in paragraph (1)(b) may be in an unlicensed setting with school aged children.

Home room staff

18. (1) A home room shall have a person known as the lead staff person and that lead staff person shall have not less than a Level 1 certification in the age range classifications of the children cared for in that room and not less than one year of work experience in one of the classifications.

(2) A person employed in a child care centre who is considered to be a part of the ratio of staff to children referred to in section 15 or 25 and who is not the lead staff person, shall have not less than an entry level certification in the age range classifications of the children cared for in the home room to which that person is assigned and in the event there are infants in the home room a level one certification in infant care is required.

Family child care qualifications

19. (1) A home visitor shall have

(a) not less than a Level 2 certification in the family child care classification; and

(b) not less than 2 years experience in a family child care setting.

(2) A person who offers a child care service in his or her home under the supervision of an agency or under his or her own licence shall have not less than an entry level certification in family child care.

Child care services consultants

20. Where the department or a board employs a person as a child care services consultant to administer and monitor the licensing of child care services in the province or in a region under the jurisdiction of the board, that child care services consultant shall have

(a) a Level 4 certification; and

(b) not fewer than 3 years of working experience in a child care setting.

Waiver of qualifications

21. (1) The educational and work qualifications contained in sections 17 to 19 may be waived by a director where the director is satisfied that persons who meet the qualifications cannot be reasonably obtained by the child care service in the area in which the service is operated.

(2) In seeking a waiver of a director under subsection (1), a licensee shall provide the director with

- (a) a copy of the advertisement seeking qualified applicants;
- (b) the reasons why a person with suitable qualifications cannot be reasonably obtained and why the licensee has selected another person;
- (c) the conditions agreed to by the person selected for fulfilling the required qualifications; and
- (d) the conditions for satisfying the educational requirements contained in sections 17 to 19 agreed to by the applicant.

(3) A director may approve a person referred to in subsection (2) or may approve the person subject to the conditions the director may set.

Equivalency

22. Notwithstanding sections 17 to 20 the provincial director may determine a combination of education and experience as equivalent to the certification levels described in the Schedule.

Continuing education

23. In order to keep a certification valid, the holder of that certification shall complete not less than 30 hours of professional development training or continuing education every 3 years.

Transitional education requirements

24. Notwithstanding sections 17 to 20, a person approved as a group supervisor of a day care licensed under the *Day Care and Homemaker Services Act* for 10 or more years immediately before June 4, 1999 shall be considered to hold the certification required of an operator under these regulations.

Transitional

25. A day care centre licensed under the *Day Care and Homemaker Services Act* whose licence was in force on June 4, 1999 and that had, on that day an enrolment of children who were

- (a) more than 36 months and less than 69 months with more than 16 children in a group, may continue with that group to a maximum of 24 children with a ratio of one staff person to 8 children;

- (b) more than 24 months and less than 69 months, who do not attend school, and with more than 10 children in a mixed age group, may continue with that group to a maximum of 15 children with a ratio of one staff person to 5 children;
- (c) a group comprising more than 10 children who were between the ages of 24 and 155 months may continue with that age group to a maximum of 16 children, but the adult to child ratio shall be one to 8, no more than 4 children shall be between 24 and 36 months and no more than 4 children shall be between 84 to 155 months; and
- (d) a group comprising more than 16 children who were between the ages of 36 and 155 months may continue with that age group to a maximum of 24 children, but the adult to child ratio shall be one to 8 and no more than 4 children shall be 84 to 155 months.

New licence re-
quired

26. Where a child care centre referred to in subsection 15(7) or section 25 changes its location, capacity, physical structure or age range of children, that child care service shall apply for a new licence under the Act.

Transitional: play
spaces

27. A child care service licensed on the coming into force of these regulations that has an existing play space adjacent to the building where the service is provided that is unable to meet the space requirements for an outdoor play space imposed by these regulations may be exempted where the director is satisfied that the service's program contains compensatory measures that adequately address the deficiency.

Day camps

28. The activity commonly known as day camps is not considered to be a child care service to which the Act and these regulations applies.

Repeal

29. The *Child Care Services Regulations, Newfoundland and Labrador Regulation 37/99*, are repealed.

Schedule

Child Care Service Certification

| Classification | Entry Level | Level One | Level Two | Level Three | Level Four |
|--------------------------|---|---|---|---|---|
| Preschool | Preschool Orientation Course (PSOC) | Early Childhood Education (ECE) Certificate | ECE diploma | ECE diploma plus post-diploma specialization <i>or</i> ECE certificate plus related university degree | university degree in ECE <i>or</i> University degree plus ECE diploma |
| School-Age | School-age Orientation Course (SACCOC) | ECE Certificate plus SACCOC <i>or</i> related post-secondary certificate plus PSOC and SACCOC | ECE diploma plus SACCOC <i>or</i> related post-secondary diploma plus PSOC and SACCOC | preschool or school age level 2 plus post-diploma school age child care specialization <i>or</i> an Education degree plus SACCOC <i>or</i> related university degree plus PSOC and SACCOC | |
| Infant | No entry Level for Infant Child Care Services Certification | ECE certificate plus infant child care orientation course (ICCOC) | ECE diploma plus ICCOC | ECE diploma plus post-diploma infant-toddler specialization <i>or</i> related university degree plus ECE certificate plus ICCOC | |
| Family Child Care | Family Child Care Orientation Course (FCCOC) | Post-secondary Certificate in family child care <i>or</i> ECE certificate plus FCCOC | Family Child Care Level I plus ECE certificate <i>or</i> ECE diploma plus FCCOC | Family child care certificate plus ECE diploma <i>or</i> Family home child care level 1 plus related university degree | |

©Earl G. Tucker, Queen's Printer



**NEWFOUNDLAND AND LABRADOR
REGULATION 90/05**

Rules of the Supreme Court, 1986 (Amendment)
under the
Judicature Act

(Filed September 26, 2005)

Under the authority of section 55 of the *Judicature Act*, the Rules Committee of the Trial Division, on September 16, 2005, makes the following Rule.

Dated at St. John's, September 26, 2005.

Barry R. Sparkes, Q.C.
Registrar of the Supreme Court
Secretary, Rules Committee

RULES

Analysis

- | | |
|-----------------------------------|--------------------------------|
| 1. Rule 44A Added | 44A.02 Application |
| RULE 44A | 44A.03 Determination of amount |
| ADVANCE | 44A.04 Payment |
| PAYMENT OF | 44A.05 Multiple applications |
| DAMAGES | |
| 44A.01 Advance payment of damages | 2. Commencement |

1. The *Rules of the Supreme Court, 1986* are amended by adding immediately after Rule 44 the following:

**RULE 44A
ADVANCE PAYMENT OF DAMAGES**

Advance payment of damages

44A.01. Before damages are assessed, a judge may order the defendant to make an advance payment to the plaintiff on account of special damages if the court is satisfied that

- (a) the defendant against whom the order is sought has admitted liability for the plaintiff's damages, or
- (b) the plaintiff has obtained judgment against the defendant with damages to be assessed.

Application

44A.02. In any application for an advance payment of special damages, the plaintiff must specify, supported by affidavit evidence, the amount and nature of the special damages for which payment is sought.

Determination of amount

44A.03. In determining the amount of an advance payment, the judge may take into account any circumstances that the judge considers relevant, including

- (a) the amount of special damages already incurred or likely to be incurred before damages are assessed,
- (b) any counterclaim by the defendant,
- (c) the extent, if any, to which the plaintiff may be found to be contributorily negligent,
- (d) any failure by the plaintiff to mitigate the amount of special damages, and
- (e) the needs and resources of the plaintiff and the means of the defendant, including the availability to the defendant of in-

surance to indemnify the defendant in respect of the plaintiff's claim.

Payment

44A.04. The judge may order that payment under rule 44A.01 may be made by lump sum, by instalment, or by both.

Multiple applications

44A.05. A plaintiff may make more than one application pursuant to this Rule.

Commencement

2. This rule shall come into force on January 1, 2006.

©Earl G. Tucker, Queen's Printer



**NEWFOUNDLAND AND LABRADOR
REGULATION 91/05**

Employee Exemption Order, 2005
under the
Social Workers Association Act

(Filed September 27, 2005)

Under the authority of subsection 3(3) of the *Social Workers Association Act*, I make the following Order.

Dated at St. John's, September 27, 2005.

John Ottenheimer
Minister of Health and Community Services

REGULATIONS

Analysis

- | | |
|----------------|--------------|
| 1. Short title | 3. Exemption |
| 2. Definition | 4. Repeal |

Short title **1.** These Regulations may be cited as the *Employee Exemption Order, 2005*.

Definition **2.** In this Order, "Act" means the *Social Workers Association Act*.

Exemption **3.** (1) The following employees of the Government of the Province are exempt from the application of the *Act*:

- (a) adult probation officers;
- (b) classification officers; and
- (c) victim service coordinators.

(2) Employees exempted pursuant to section 3(1) and who meet the entry to practice requirements may register in accordance with the *Act*.

Repeal

4. The *Employee Exemption Order, Consolidated Newfoundland and Labrador Regulation 1131/96*, is repealed.

©Earl G. Tucker, Queen's Printer

Index

PART I

| | |
|--|-----|
| Change of Name Act – Applications | 561 |
| Corporations Act – Notice | 556 |
| Quieting of Titles Act– Application | 554 |
| Trustee Act – Notice | 554 |
| Urban and Rural Planning Act – Notices | 553 |

PART II

CONTINUING INDEX OF SUBORDINATE LEGISLATION

| Title of Act and Subordinate Legislation made thereunder | CNLR or NL Reg. | Amendment | NL Gazette Date & Page No. |
|--|--------------------|--|-------------------------------|
| Child Care Services Act | | | |
| Child Care Services Regulations, 2005 | NLR 89/05 | R & S 37/99, 1/00, 46/00 & 46/01 | Sept 30/05 p. 587 |
| Judicature Act | | | |
| Rules of the Supreme Court, 1986 (Amdt) | NLR 90/05 | Rules 44 A.01- 44A.05 Added In force Jan. 1/06 | Sept 30/05 p. 611 |
| Social Workers Association Act | | | |
| Employee Exemption Order, 2005 | NLR 91/05 | CNLR 1131/96 R & S | Sept 30/05 p. 615 |

The Newfoundland and Labrador Gazette is published from the office of Earl G. Tucker, Queen's Printer.

Copy for publication must be received before **Friday, 4:30 p.m.**, seven days before publication, to ensure inclusion in next issue. Advertisements should be typewritten or printed legibly, separate from covering letter. Number of insertions required must be stated and the names of all signing officers typewritten or printed.

Advertising rates are available upon request. Subscription rate for *The Newfoundland and Labrador Gazette* is \$125.00 for 52 weeks plus applicable tax (\$133.75). Weekly issues of \$3.00 per copy, plus tax payable in advance.

All cheques, money orders, etc., should be made payable to THE NEWFOUNDLAND EXCHEQUER ACCOUNT and all correspondence should be addressed to: Office of the Queen's Printer, P. O. Box 8700, Ground Floor, East Block, Confederation Building, St. John's, NL A1B 4J6. Telephone (709) 729-3649. Fax: (709) 729-1900.

Web Site: www.gov.nl.ca/queensprinter

Legislative History of the Judicature Act, 1791-1988

Price \$25.00 plus G.S.T.

(Plus \$2.00 postage and handling)

Place your order by contacting:

Office of The Queen's Printer

Confederation Building, East Block

St. John's, NL A1B 4J6

Telephone: (709) 729-3649 Fax: (709) 729-1900

Government Information Product

Publication Rate Mail

G.S.T. # R107442683

All requests for Subscription and Legislation MUST be prepaid.