



THE NEWFOUNDLAND AND LABRADOR GAZETTE

PART I

PUBLISHED BY AUTHORITY

Vol. 89

ST. JOHN'S, FRIDAY, February 21, 2014

No. 8

HIGHWAY TRAFFIC ACT

TOWN OF GANDER TRAFFIC REGULATIONS NOTICE

The TOWN OF GANDER is amending the fines stipulated in its Traffic Regulations under the provisions of Section 189 of the *Highway Traffic Act* and under section 414 of the *Municipalities Act, 1999*, as amended as follows:

1. The fine for violating Section 23 of the Traffic Regulations will be increased from \$27 to \$52.
2. The fine for violating Section 24 of the Traffic Regulations will be increased from \$52 to \$107.

ADOPTED by the Town Council of the TOWN OF GANDER on November 5, 2013.

TOWN OF GANDER
Garry Brown, Town Clerk

Feb 21

MINERAL ACT

NOTICE

Published in accordance with section 62 of CNLR 1143/96 under the *Mineral Act*, cM-12, RSNL 1990 as amended.

Mineral rights to the following mineral licenses have reverted to the Crown:

Mineral License 008276M
Held by Black Bart Prospecting Inc.
Situate near Glenwood, Central NL
On map sheet 02D/15

Mineral License 010551M
Held by 7980736 Canada Inc.
Situate near Buchans Lake, Central NL
On map sheet 12A/15

Mineral License 010212M
Held by Prominex Resource Corp.
Situate near Tulks Hill, Central NL
On map sheet 12A/11, 12A/06

Mineral License 010236M
Held by Rambler Metals and Mining Canada Limited
Situate near Gull Pond, Baie Verte Peninsula
On map sheet 12H/16

Mineral License 010237M
Held by Dimmell, Peter
Situate near Rambler, Baie Verte Peninsula
On map sheet 12H/16

Mineral License 010349M
Held by Mega Uranium Ltd.
Situate near West Micmac Lake
On map sheet 13K/09E

Mineral License 010367M
Held by Jet Metal Corp.
Situate near Otter Lake
On map sheet 13K/03

Mineral License 011376M
Held by Deep Sea Capital Limited
Situate near Otter Lake
On map sheet 13K/03, 13K/02

Mineral License 012695M
Held by Champion Iron Mines Limited
Situate near Great Gull Pond, Central NL
On map sheet 12H/01

Mineral License 016786M
Held by Messina Minerals Inc.
Situate near Red Indian Lake, Central NL
On map sheet 12A/10, 12A/15

Mineral License 012704M
Held by Hicks, Darrin
Situate near Lawn, Burin Peninsula
On map sheet 01L/13

Mineral License 015552M
Held by Metals Creek Resources Corp.

Situate near Victoria River, Central NL
On map sheet 12A/04

A portion of license 018046M
Held by Sweetapple, Walter
Situate near Alexander Bay, Eastern NL
On map sheet 02D/09
more particularly described in an application on file at Department of Natural Resources

Mineral License 015751M
Held by Sceviour, John
Situate near Southwest Gander River, Central NL
On map sheet 02D/11

Mineral License 020681M
Held by Eagleridge International Limited
Situate near Port Hope Simpson
On map sheet 13A/09

Mineral License 020316M
Held by Chan, Lai Lai
Situate near Baie Verte Area
On map sheet 12H/16

Mineral License 015765M
Held by Eagleridge International Limited
Situate near Port Hope Simpson
On map sheet 13A/09

Mineral License 016591M
Held by Rare Earth Metals Inc.
Situate near Letitia Lake
On map sheet 13L/01, 13L/08

Mineral License 016604M
Held by Day, Robin
Situate near Isabella Falls
On map sheet 13E/15, 13L/02

Mineral License 016622M
Held by Malhi, Kal
Situate near Bunyans Cove, Eastern NL
On map sheet 02C/05

Mineral License 016662M
Held by Day, Robin
Situate near Isabella Falls
On map sheet 13L/02

Mineral License 016673M
Held by Pike, Lloyd
Situate near Bunyans Cove, Eastern NL
On map sheet 02C/05

Mineral License 018049M
Held by Lundrigan, Reg
Situate near Burin, Burin Peninsula
On map sheet 01M/03

Mineral License 018058M
Held by Labrador-Menihek Resources Inc.
Situate near Lac Clughny
On map sheet 23J/11

Mineral License 018062M
Held by Noel, E. Michele
Situate near Rocky Pond Area, Central NL
On map sheet 02E/02

THE NEWFOUNDLAND AND LABRADOR GAZETTE
February 21, 2014

Mineral License Held by Situates near On map sheet	018083M Altius Resources Inc. Southwest Gander River, Central NL 02D/06, 02D/11	Situates near On map sheet	West of Marble Cove Area, Baie Verte Peninsula 12H/16
Mineral License Held by Situates near On map sheet	019302M Tawsho Mining Inc. Kings Point Area, Central NL 12H/09	Mineral License Held by Situates near On map sheet	020566M Bolt, Darryl Grand Le Pierre, Fortune Bay 01M/10
Mineral License Held by Situates near On map sheet	020595M MacDonald, David North of Shoulder Blade Lake, Central NL 12A/16	Mineral License Held by Situates near On map sheet	020568M Sweetapple, Walter West of Paradise River 13B/10
Mineral License Held by Situates near On map sheet	019493M Metals Creek Resources Corp. Gander Lake, Central NL 02D/15	Mineral License Held by Situates near On map sheet	020570M Sweetapple, Walter West of Paradise River 13B/10
Mineral License Held by Situates near On map sheet	020157M Altius Resources Inc. Rocky Pond, Central NL 02E/01, 02E/02	Mineral License Held by Situates near On map sheet	020571M Stokes, Mike Glenwood Area, Central NL 02D/15
Mineral License Held by Situates near On map sheet	019498M McLennon, Tom Long Island Tickle, Central NL 02E/12	Mineral License Held by Situates near On map sheet	020572M Sweetapple, Walter St Paul River 13B/08, 13B/09
Mineral License Held by Situates near On map sheet	020534M Lannon, Rosalind Stony Brook, Central NL 02D/13	Mineral License Held by Situates near On map sheet	020574M Smith, Leroy Arnolds Cove, Avalon Peninsula 01N/13
Mineral License Held by Situates near On map sheet	020536M Cornerstone Resources Inc. Micmac Lake, Baie Verte Peninsula 12H/09	The lands covered by this notice except for the lands within Exempt Mineral Lands, the Exempt Mineral Lands being described in CNLR 1143/96 and NLR 71/98, 104/98, 97/00, 36/01, 31/04, 78/06, 8/08, 28/09 and 5/13 and outlined on 1:50 000 scale digital maps maintained by the Department of Natural Resources, will be open for staking after the hour of 9:00 a.m. on the 32 nd clear day after the date of this publication.	
Mineral License Held by Situates near On map sheet	020537M Jacobs, Daniel Indian Pond, Central NL 12H/08, 12H/07, 12H/09, 12H/10	DEPARTMENT OF NATURAL RESOURCES JUSTIN LAKE Manager - Mineral Rights	
Mineral License Held by Situates near On map sheet	020539M Hurley, Wayne Indian Pond, Central NL 12H/09, 12H/10	File #'s	774: 4430, 4500, 5657, 5683, 5685, 5758, 5769, 6442, 7574, 7576, 7582, 9987, 9991,
Mineral License Held by Situates near On map sheet	020558M Courtney, Stephen Stony Brook, Central NL 02D/13		775: 0032, 0043, 0046, 0047, 0052, 0459, 0472, 0490, 0515, 0525, 1437, 1446, 1450, 1464, 2559, 2705, 2710, 2712, 2715, 3458, 3460, 3461, 3463, 3475, 3476, 3479, 3480, 3482, 3484, 3485, 3486, 3487
Mineral License Held by Situates near On map sheet	020559M Quinlan, Marilyn Inspector Island, Central NL 02E/07		
Mineral License Held by	020565M Hurley, Peter		

Feb 21

MECHANICS' LIEN ACT

**NOTICE OF INTENTION TO RELEASE
MECHANICS' LIEN HOLDBACK
PURSUANT TO SECTION 12 OF THE
MECHANICS' LIEN ACT,
RSNL1990, cM-3 (THE "ACT")**

Pursuant to section 12 of the Act, and in relation to a contract A4VI-30-CA0017 entered into between VALE NEWFOUNDLAND AND LABRADOR LIMITED and Cahill Lindsay Partnership which contract is dated as of June 22, 2011, notice is hereby given of the intention of VALE NEWFOUNDLAND AND LABRADOR LIMITED, to the release of mechanics' lien holdback funds 30 days following the date of this notice.

Dated at Long Harbour, NL, this 31st day of January, 2014.

FLUOR CANADA LIMITED
Mario D. Rivera,
Project Contracts Manager
acting as Agent for Vale NL Limited

Feb 7, 14, 21 & 28

**URBAN AND RURAL PLANNING ACT, 2000
NOTICE OF REGISTRATION
MOUNT PEARL MUNICIPAL PLAN 2010
AMENDMENT NO. 6, 2013
MOUNT PEARL DEVELOPMENT
REGULATIONS 2010
AMENDMENT NO. 22, 2013
(WORRALL CRESCENT AMENDMENT)**

TAKE NOTICE that the MOUNT PEARL Municipal Plan Amendment No. 6, 2013 and the MOUNT PEARL Development Regulations 2010 Amendment No. 22, 2013, adopted by Council on the 5th day of November, 2013, have been registered by the Department of Municipal and Intergovernmental Affairs.

In general terms, the purpose of the MOUNT PEARL Municipal Plan 2010 Amendment No. 6, 2013 is to amend the future land use map by re-designating a portion of property situated at the south side of Park Avenue, immediately east of the property at 59 Park Avenue, and immediately west of the provincial T'Railway corridor from Open Space to Residential.

In general terms, the purpose of the MOUNT PEARL Development Regulations 2010 Amendment No. 22, 2013 is to amend the land use zoning map by rezoning a portion of property situated at the south side of Park Avenue, immediately east of the property at 59 Park Avenue, and immediately west of the provincial T'Railway corridor from Open Space (OS) to Residential – Medium Density (RMD).

The MOUNT PEARL Municipal Plan 2010 Amendment No. 6, 2013 and MOUNT PEARL Development Regulations 2010 Amendment No. 22, 2013 come into effect on the day that this notice is published in *The*

Newfoundland and Labrador Gazette. Anyone who wishes to inspect a copy of these Amendments may do so at the Mount Pearl City Hall, 3 Centennial Street, during normal working hours.

CITY OF MOUNT PEARL
Per: Michele Peach, Chief Administrative Officer

Feb 21

**NOTICE OF REGISTRATION
TOWN OF CAPE ST. GEORGE
MUNICIPAL PLAN 2012
AND DEVELOPMENT
REGULATIONS 2012**

TAKE NOTICE that the TOWN OF CAPE ST. GEORGE Municipal Plan 2012 and Development Regulations 2012, adopted on the 1st day of November, 2013 and approved on the 20th day of December, 2013, have been registered by the Minister of Municipal and Intergovernmental Affairs.

The CAPE ST. GEORGE Municipal Plan 2012 and Development Regulations 2012 come into effect on the day that this notice is published in *The Newfoundland and Labrador Gazette*. Anyone who wishes to inspect a copy of the CAPE ST. GEORGE Municipal Plan 2012 and Development Regulations 2012 may do so at the Town Office, Cape St. George during normal working hours.

TOWN OF CAPE ST. GEORGE
Ina Renouf, Town Clerk

Feb 21

**NOTICE OF REGISTRATION
TOWN OF PORTUGAL COVE-ST. PHILIP'S
DEVELOPMENT REGULATIONS
AMENDMENT No. 48, 2012
ST. JOHN'S URBAN REGION
REGIONAL PLAN
AMENDMENT No. 5, 2013**

TAKE NOTICE that the TOWN OF PORTUGAL COVE-ST. PHILIP'S Development Regulations Amendment No. 39, 2010, as adopted by Council on the 22nd day of October, 2013, has been registered by the Minister of Municipal and Intergovernmental Affairs.

In general terms, Development Regulations Amendment No. 48, 2012 will re-zone an area of land from Development Scheme Area 7, Old Broad Cove West, to Residential Medium Density.

St. John's Urban Region Regional Plan Amendment No. 5, 2013, will re-designate the same area of land as described in Development Regulations Amendment No. 48, 2012, from Rural to Urban Development.

The TOWN OF PORTUGAL COVE-ST. PHILIP'S Development Regulations Amendment No. 48, 2012, comes into effect on the day that this notice is published in *The Newfoundland and Labrador Gazette*. Anyone who wishes to inspect a copy of the Town of Portugal Cove-St. Philip's Development Regulations Amendment No. 48,

2012, may do so at the Town Office, Portugal Cove-St. Philip's during normal working hours.

TOWN OF PORTUGAL COVE-ST. PHILIP'S
Judy Squires, CMC, Town Clerk

Feb 21

LANDS ACT

NOTICE OF INTENT

Lands Act, c36, SNL 1991, as amended

NOTICE IS HEREBY given that H & D FABRICATION of Port Aux Basques, NL intends to apply to the Department of Environment and Conservation, two months from the publication of this notice, to develop within, pursuant to Section 7(2) of the said Act, to that piece of Crown land situated within ten (10) metres of the waters of Port Aux Basques Harbour in the Electoral District of Burgeo - LaPoile for the purpose of providing access to proposed marine marginal wharf infrastructure and being more particularly described as follows:

*Bounded on the North by H&D Fabrication
Grant pursuant to lease 94873
for a distance of 100 metres;
Bounded on the East by the
Shoreline Reservation
for a distance of 10 metres;
Bounded on the South by H&D Fabrication
Grant pursuant to lease 94873
for a distance of 100 metres;
Bounded on the West by the
Shoreline Reservation
for a distance of 10 metres;
and containing an area of
approximately 1,000 square metres.*

Any person wishing to object to the application must file the objection, in writing, within one month from the publication of this Notice, with reasons for it, to the Minister of Environment and Conservation, and mail to the nearest Regional Lands Office:

c/o Eastern Regional Lands Office, P.O. Box 8700, Howley Building, Higgins Line, St. John's, NL, A1B 4J6.

c/o Central Regional Lands Office, P.O. Box 2222, Gander, NL, A1V 1L7.

c/o Western Regional Lands Office, P.O. Box 2006, Sir Richard Squires Building, Corner Brook, NL, A2H 6J8.

c/o Labrador Regional Lands Office, P.O. Box 3014, Station "B", Happy Valley-Goose Bay, NL, A0P 1E0.

For further information on the proposed application, please contact: NEIL HUNT, Telephone Number: (709) 748-7175.

DISCLAIMER: *The Newfoundland and Labrador Gazette* publishes a NOTICE OF INTENT as received from the Applicant and takes no responsibility for errors or omissions in the property being more particularly described.

Feb 21

NOTICE OF INTENT

Lands Act, c36, SNL 1991, as amended

NOTICE IS HEREBY given that THOMAS POWER of Ocean Pond, NL intends to apply to the Department of Environment and Conservation, two months from the publication of this notice, to develop within, pursuant to Section 7(2)(e) of the said Act, to that piece of Crown land situated within fifteen (15) metres of the waters of Ocean Pond in the Electoral District of Placentia-St. Mary's for the purpose of a boathouse/wharf and being more particularly described as follows:

*Bounded on the North by property of Tom Power
for a distance of 35 metres;
Bounded on the East by Crown land
for a distance of 11 metres;
Bounded on the South by Ocean Pond
for a distance of 35 metres;
Bounded on the West by Crown land
for a distance of 11 metres;
and containing an area of
approximately 385 square metres.*

Any person wishing to object to the application must file the objection, in writing, within one month from the publication of this Notice, with reasons for it, to the Minister of Environment and Conservation, and mail to the nearest Regional Lands Office:

c/o Eastern Regional Lands Office, P.O. Box 8700, Howley Building, Higgins Line, St. John's, NL, A1B 4J6.

c/o Central Regional Lands Office, P.O. Box 2222, Gander, NL, A1V 1L7.

c/o Western Regional Lands Office, P.O. Box 2006, Sir Richard Squires Building, Corner Brook, NL, A2H 6J8.

c/o Labrador Regional Lands Office, P.O. Box 3014, Station "B", Happy Valley-Goose Bay, NL, A0P 1E0.

For further information on the proposed application, please contact: THOMAS POWER, Telephone Number: (709) 754-0306 or (709) 687-4400.

DISCLAIMER: *The Newfoundland and Labrador Gazette* publishes a NOTICE OF INTENT as received from the Applicant and takes no responsibility for errors or omissions in the property being more particularly described.

Feb 21

QUIETING OF TITLE ACT

**2014 01 G 0126
IN THE SUPREME COURT OF
NEWFOUNDLAND AND LABRADOR
TRIAL DIVISION (GENERAL)**

IN THE MATTER OF an Application of JOSHUA GLADNEY, of Portugal Cove-St. Philip's, Province of Newfoundland and Labrador, to have title to that piece or parcel of land situate and being on Neary's Pond Road, in the Town of Portugal Cove-St. Philip's, Province of Newfoundland and Labrador containing an area of 4.557 ha investigated and declared under the *Quieting of Titles Act*, RSNL1990 cQ-3.

NOTICE

NOTICE is hereby given to all parties that JOSHUA GLADNEY of Portugal Cove-St. Philip's in the Province of Newfoundland and Labrador (hereinafter called the "Owner") has applied to the Supreme Court of Newfoundland, Trial Division (General) to have investigated:

All that piece or parcel of land situate, lying and being on the west side of Portugal Cove Road and the northwest side of Neary's Pond Road, in the Town of Portugal Cove - St. Philips, in the Province of Newfoundland and Labrador, Canada and being more particularly described as follows, that is to say:

BEGINNING at a point, said point being in the western limit of Portugal Cove Road and having co-ordinates of North 5 275 636.917 metres and East 317 289.686 metres of the modified three degree transverse Mercator projection (Zone 1, NAD 83) for the Province of Newfoundland Labrador, Canada:

THENCE running along the aforementioned western limit of Portugal Cove Road S13°38'17"W a distance of 16.458 metres;

THENCE running by land of Martin Property S86°08'23"W a distance of 29.573 metres;

THENCE running S84°13'12"W a distance of 18.711 metres;

THENCE running following the arc of a curve (counter-clockwise) having a radius of 154.81 metres, an arc distance of 112.459 metres (chord bearing and distance being S66°06'20"W and 110.002 metres);

THENCE running S44°37'38"W a distance of 35.377 metres;

THENCE running S31°10'00"E a distance of 33.499 metres;

THENCE running by land of Inspiration Enterprises (Registration No. 555099, Registry of Deeds for Newfoundland and Labrador) following the arc of a curve (clockwise) having a radius of 15.24 metres, an arc distance of 5.376 metres (chord bearing and distance being S20°50'23"W and 5.348 metres);

THENCE running S31°20'00"E a distance of 30.480 metres;

THENCE running by land of George Richard Gollop (Civic No. 20-22 Neary's Pond Road- Registration No. 270922, Registry of Deeds for Newfoundland and Labrador) S32°10'00"E a distance of 58.470 metres;

THENCE running along the northwestern limit of Neary's Pond Road S55°42'31"W a distance of 3.653 metres;

THENCE running by land of Gerard & Mary McDonald (Civic 26-28 Neary's Pond Road-Roll 553 - Frame 152, Registry of Deeds for Newfoundland and Labrador) N32°08'46"W a distance of 27.230 metres;

THENCE running S57°11'24"W a distance of 22.640 metres;

THENCE running by land of Joshua Gladney (Civic No. 30-36 Neary's Pond Road - Registration No. 487051, Registry of Deeds for Newfoundland and Labrador) N32°06'55"W a distance of 0.702 metres;

THENCE running S63°47'53"W a distance of 45.980 metres;

THENCE running by land of Warren and Penney Fisher (Civic No. 38-46 Neary's Pond Road) N32°07'00"W a distance of 14.924 metres;

THENCE running S64°57'00"W a distance of 82.393 metres;

THENCE running by land of Victor and Vera Churchill (Civic No. 48-54 - Registration No. 444750, Registry of Deeds for Newfoundland and Labrador) N34°47'51"W a distance of 25.588 metres;

THENCE running by land of Inspiration Enterprises (Civic No. 6 Western Heights - Registration No. 490285, Registry of Deeds for Newfoundland and Labrador) N25°50'23"W a distance of 21.588 metres;

THENCE running by land of Morley Barker (Civic No. 8-10 Western Heights - Registration No. 444757, Registry of Deeds for Newfoundland and Labrador) N25°59'58"W a distance of 29.156 metres;

THENCE running by land of Michael and Madonna Melay (Civic 18-20 Western Heights-Roll 2459 - Frame 1142, Registry of Deeds for Newfoundland and Labrador) N09°22'01"E a distance of 14.519 metres;

THENCE running N41°43'21"E a distance of 19.154 metres;

THENCE running by land of Kenneth and Deanne Spurrell (Civic No. 22-24 Western Heights - Roll 1818 - Frame 88, Registry of Deeds for Newfoundland and Labrador) and by land of Scott and Josephine Marshall (Civic No. 26-28 Western Heights - Roll 1383 Frame 1385, Registry of Deeds for Newfoundland and Labrador) N38°20'34"E a distance of 39.861 metres;

THENCE running by land of Scott and Josephine Marshall (Civic No. 26-28 Western Heights - Roll 1383 - Frame 1385, Registry of Deeds for Newfoundland and Labrador)

and by land of Marion Bursey (Civic No. 30-32 Western Heights Roll 8821 - Frame 1641, Registry of Deeds for Newfoundland and Labrador) N30°47'15"E a distance of 41.492 metres;

THENCE running by land of Marion Bursey (Civic No. 30-32 Western Heights – Roll 8821 - Frame 1641, Registry of Deeds for Newfoundland and Labrador) N46°29'53"W a distance of 52.326 metres;

THENCE running N55°15'50"W a distance of 30.690 metres;

THENCE running N81°45'52"W a distance of 9.480 metres;

THENCE running by land of Inspiration Enterprises (Registration No. 490282, Registry of Deeds for Newfoundland and Labrador) N07°54'53"W a distance of 48.611 metres;

THENCE running N09°41'27"W a distance of 22.833 metres;

THENCE running N04°08'06"W a distance of 19.823 metres;

THENCE running by Properties Fronting Mercer's Road N46°54'32"E a distance of 31.102 metres;

THENCE running by land of Lester Greeley (Roll 1249 Frame 2164, Registry of Deeds for Newfoundland and Labrador) S21°35'54"E a distance of 31.380 metres;

THENCE running by land of Cheryl Brown (Registration No. 55110, Registry of Deeds for Newfoundland and Labrador), along the southwestern limit of a Right-Of-Way (Volume 3030 Folio 304-Registry of Deeds for Newfoundland and Labrador) and by land of Leonard A. Greeley Jr. (Civic No. 47-51 Old Cart Road, Registration No. 203992, Registry of Deeds for Newfoundland and Labrador) S21°59'44"E a distance of 76.488 metres;

THENCE running by land of Leonard A. Greeley Jr. (Civic No. 47-51 Old Cart Road, Registration No. 203992, Registry of Deeds for Newfoundland and Labrador) N29°58'52"E a distance of 30.667 metres;

THENCE running N30°10'11"E a distance of 28.145 metres;

THENCE running by land of Patricia and Cyril Greeley (Civic No. 37-45 Old Cart Road, Registration No. 561416, Registry of Deeds for Newfoundland and Labrador) N32°17'39"E a distance of 16.700 metres;

THENCE running N71°54'00"E a distance of 12.510 metres;

THENCE running N85°41'39"E a distance of 22.420 metres;

THENCE running by aforementioned land of Patricia and Cyril Greeley (Civic No. 37-45 Old Cart Road, Registration No. 561416, Registry of Deeds for and Newfoundland and Labrador) and by land of Donald Hodder (Registration No. 592743, Registry of Deeds for Newfoundland and Labrador) S80°41'52"E a distance of 28.792 metres;

THENCE running by land of Ralph & Donna Tucker (Roll 1204 - Frame 2098, Registry of Deeds for Newfoundland and Labrador) S02°03'57"W a distance of 35.826 metres;

THENCE running N84°11'00"E a distance of 64.620 metres;

THENCE running by land of Leonard Greeley (Portion of Volume 2730 - Folio 345, Registry of Deeds for Newfoundland and Labrador) N86°10'13"E a distance of 9.788 metres;

THENCE running N83°11'00"E a distance of 26.335 metres;

THENCE running S85°59'29"E a distance of 25.560 metres;

THENCE running by land of Darrin and Deborah Churchill (Civic 1-3 Old Cart Road, Roll 1930 – Frame 1030 Registry of Deeds for Newfoundland and Labrador) S08°24'44"W a distance of 40.410 metres;

THENCE running N84°13'12"E a distance of 18.866 metres;

THENCE running N85°23'11"E a distance of 34.880 metres, more or less, to the principal Point of Beginning.

The above described piece or parcel of land contains an area of 4.557 hectares, more or less, the same being more particularly described on the drawing hereto attached.

All bearings refer to Grid North (NAD 83).

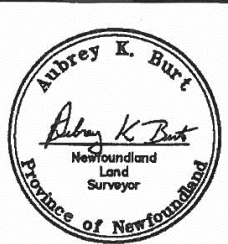
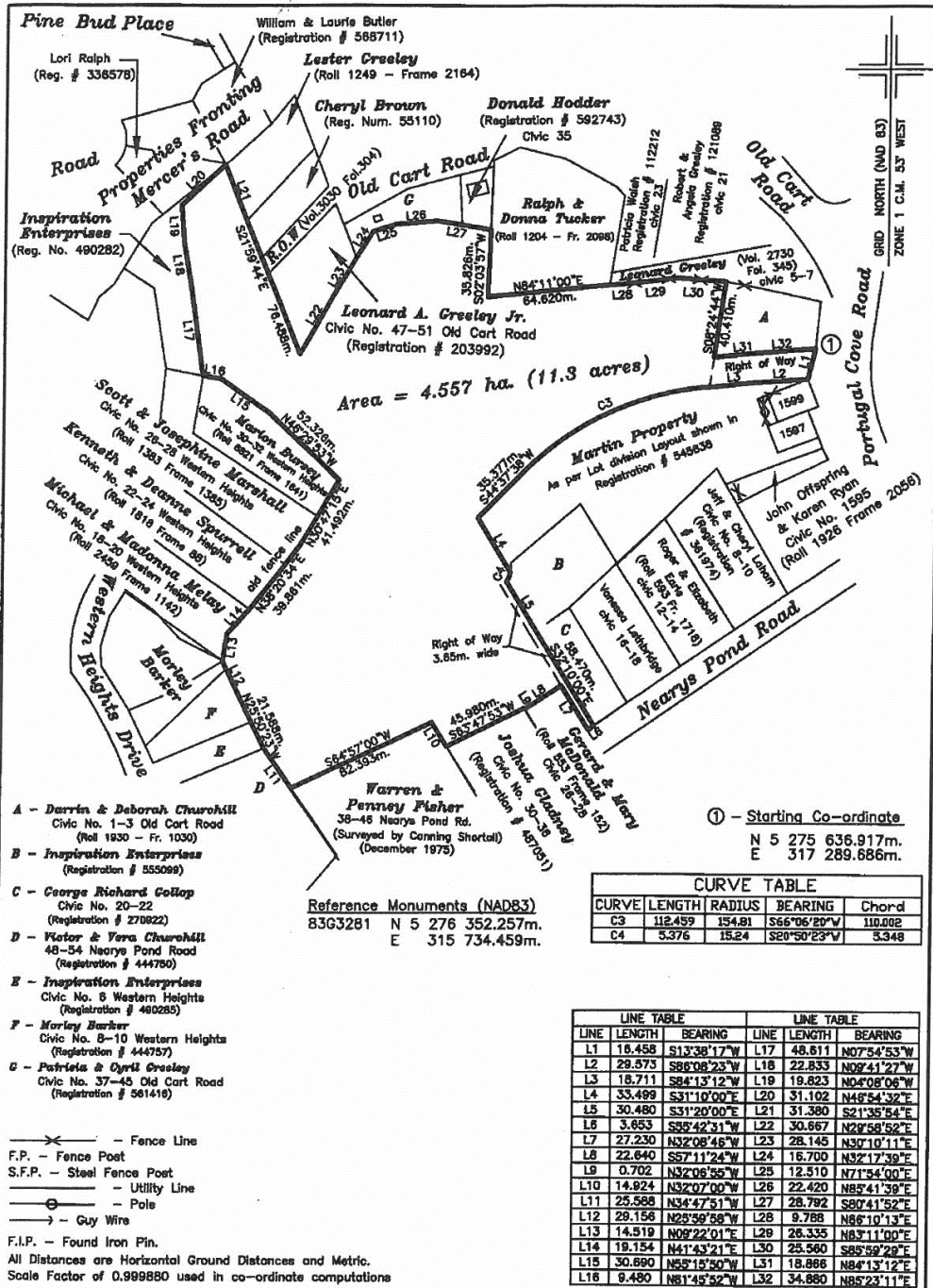
The said lot is SUBJECT-TO a RIGHT-OF-WAY for the benefit of access to Martin Property and also SUBJECT-TO a RIGHT-OF-WAY for the benefit of access to Inspiration Enterprises (Registration No. 555099, Registry of Deeds for Newfoundland and Labrador) as indicated on the attached plan.

All persons having title adverse to the said title claims by the Owner shall file in the Registry of the Supreme Court of Newfoundland and Labrador, Trial Division (General) particulars of such adverse claim and serve same, together with an Affidavit verifying same, to the undersigned, the Solicitors for the Applicant, on or before the 28th day of March, 2014, after which date no party having a claim shall be permitted to file same or be heard except by leave of the Court and subject to such conditions as the Court may deem just. All adverse claims shall then be registered in such manner as the Supreme Court may direct.

O'DEA, EARLE
Solicitors for the Petitioner/Applicant
PER: Gregory F. Kirby

ADDRESS FOR SERVICE:
323 Duckworth Street
P.O. Box 5955
St. John's, NL A1C 5X4

Tel: (709) 726-3524
Fax: (709) 726-9600



Aubrey K. Burt Surveys Ltd. Newfoundland Land Surveyor
 331 Indian Meal Line Torbay (709) 437-1088
 P.O. Box 1095, Torbay, NL, A1K 1K7 St. John's (709) 738-3363
 Email: aubrey@akbsurveyors.nf.net Facsimile: (709) 437-1084

Client: **Gladney's Bus Limited**
 Location: Portugal Cove/St. Philips, NL

Scale: 1 : 2500 Date: November 18, 2013
 Surveyed By: A.B., M.B. & M.D. Job No.: 2013-064

TRUSTEE ACT
ESTATE NOTICE

IN THE ESTATE of WILLIAM JOSEPH BENOIT, late of the Town of Stephenville Crossing, formerly of the Town of Cape St. George in the Province of Newfoundland and Labrador, Widower, Retired Logger, Deceased.

All persons claiming to be creditors of or who have any claims or demands upon or affecting the Estate of WILLIAM JOSEPH BENOIT, late of the Town of Stephenville Crossing, formerly of the Town of Cape St. George, deceased, are hereby requested to send the particulars of the same in writing, duly attested, to the undersigned Solicitor for the Executor of the Estate on or before the 24th day of March, 2014, after which date the said Executor will proceed to distribute the said Estate having regard only to the claims of which notice shall have been received.

DATED at Stephenville, Newfoundland and Labrador this 12th day of February, 2014.

MILLS LAW
Solicitors for the Executor
PER: David A. Mills, Q.C.

ADDRESS FOR SERVICE:
P.O. Box 447, 87 Gallant Street
Stephenville, NL A2N 3A3

Tel: (709) 643-5688
Fax: (709) 643-2906

Feb 21

ESTATE NOTICE

IN THE MATTER of the Estate of IVAN MICHAEL HUNTER-DUVAR, late of the Community of River of Ponds, in the Province of Newfoundland and Labrador, Deceased.

All persons claiming to be creditors of or who have any claims or demands upon or affecting the Estate of IVAN MICHAEL HUNTER-DUVAR, late of Community of River of Ponds, in the Province of Newfoundland and Labrador, deceased, are hereby requested to send particulars of the same in writing, duly attested to the undersigned Solicitor for the Executor of the Estate on or before the 14th day of March, 2014 after which date the said Executor will proceed to distribute the said Estate having regard only to the claims of which he shall then have had notice.

DATED at the Town of Deer Lake, Province of Newfoundland and Labrador, this 13th day of February, 2014.

JAMES GOUDIE LAW OFFICE
Solicitor for the Executor
PER: James Goudie

ADDRESS FOR SERVICE:
1A High Street
Deer Lake, NL A8A 1M6

Tel: (709) 635-4300
Tel: 1-800-815-8663
Fax: (709) 635-4301

Feb 21

ESTATE NOTICE

IN THE MATTER OF the Estate and Effects of late RONALD FAULKNER of the Community of Aspen Cove, in the Province of Newfoundland and Labrador, Retired Person, Deceased.

All persons claiming to be creditors of or who have any claims or demands upon or affecting the Estate of RONALD FAULKNER, the aforesaid deceased, who died at City of St. John's, in the Province of Newfoundland and Labrador on or about the 22nd day of December, 2012, are hereby requested to send particulars thereof in writing, duly attested, to the undersigned Solicitor for the Administratrix of the Estate on or before the 7th day of March, 2014 after which date the Administratrix will proceed to distribute the said Estate having regard only to the claims of which she shall then have had notice.

DATED at the Town of Gander, NL, this 13th day of February, 2014.

BONNELL LAW
Solicitor for the Administratrix
PER: R. Archibald Bonnell

ADDRESS FOR SERVICE:
P.O. Box 563
218 Airport Boulevard
Gander, NL A1V 2E1

Tel: (709) 651-4949
Fax: (709) 651-4951

Feb 21 & 28

ESTATE NOTICE

IN THE MATTER OF the Estate and Effects of late WALTER JAMES POND JR., of the Town of Gander, in the Province of Newfoundland and Labrador, Retired Person, Deceased.

All persons claiming to be creditors of or who have any claims or demands upon or affecting the Estate of WALTER JAMES POND JR., the aforesaid deceased, who died at Town of Gander, in the Province of Newfoundland and Labrador on or about the 8th day of February, 1995, are hereby requested to send particulars thereof in writing, duly attested, to the undersigned Solicitor for the Administratrix of the Estate on or before the 7th day of March, 2014 after which date the Administratrix will proceed to distribute the

said Estate having regard only to the claims of which he shall then have had notice.

DATED at the Town of Gander, Newfoundland and Labrador, this 13th day of February, 2014.

BONNELL LAW
Solicitor for the Administratrix
PER: R. Archibald Bonnell

ADDRESS FOR SERVICE:
P.O. Box 563
218 Airport Boulevard
Gander, NL A1V 2E1

Tel: (709) 651-4949
Fax: (709) 651-4951

Feb 21 & 28



THE NEWFOUNDLAND AND LABRADOR GAZETTE

PART II

SUBORDINATE LEGISLATION
FILED UNDER THE STATUTES AND SUBORDINATE LEGISLATION ACT

Vol. 89

ST. JOHN'S, FRIDAY, FEBRUARY 21, 2014

No. 8

NEWFOUNDLAND AND LABRADOR REGULATIONS

NLR 12/14
NLR 13/14
NLR 14/14
NLR 15/14
NLR 16/14
NLR 17/14



**NEWFOUNDLAND AND LABRADOR
REGULATION 12/14**

*Notice of Wellhead Protected Water Supply Area of the Local Service
District of Deep Bight, Number 1 Well, WS-G-0213
under the
Water Resources Act*

(Filed February 12, 2014)

Under the authority of section 61 of the *Water Resources Act*, I designate the area known as the *Wellhead Protected Water Supply Area, Number 1 Well, WS-G-0213* for the Local Service District of Deep Bight as a wellhead protected water supply area.

Dated at St. John's, February 7, 2014.

Joan Shea
Minister of Environment and Conservation

NOTICE

This area includes all lands in the Provincial Electoral District of Trinity North abutted and bounded as follows:

By a circle of 150 metres radius with its centre being the Local Service District's water supply # 1 Well, having UTM coordinates northing 5,331,104 metres and easting 280,493 metres.

All coordinates refer to Zone 22 of the NAD 83 Universal Transverse Mercator Projection.

© Queen's Printer



**NEWFOUNDLAND AND LABRADOR
REGULATION 13/14**

*Notice of Wellhead Protected Water Supply Area of the Local Service
District of Deep Bight, Number 2 Well, WS-G-0213
under the
Water Resources Act*

(Filed February 18, 2014)

Under the authority of section 61 of the *Water Resources Act*, I designate the area known as the *Wellhead Protected Water Supply Area, Number 2 Well, WS-G-0213* for the Local Service District of Deep Bight as a wellhead protected water supply area.

Dated at St. John's, February 7, 2014.

Joan Shea
Minister of Environment and Conservation

NOTICE

This area includes all lands in the Provincial Electoral District of Trinity North abutted and bounded as follows:

By a circle of 150 metres radius with its centre being the Local Service District's water supply #2 Well, having UTM coordinates northing 5,331,141 metres and easting 280,491 metres.

All coordinates refer to Zone 22 of the NAD 83 Universal Transverse Mercator Projection.

©Queen's Printer



**NEWFOUNDLAND AND LABRADOR
REGULATION 14/14**

*Notice of Wellhead Protected Water Supply Area of the Local Service
District of Deep Bight, Number 3 Well, WS-G-0213
under the
Water Resources Act*

(Filed February 18, 2014)

Under the authority of section 61 of the *Water Resources Act*, I designate the area known as the *Wellhead Protected Water Supply Area, Number 3 Well, WS-G-0213* for the Local Service District of Deep Bight as a wellhead protected water supply area.

Dated at St. John's, February 7, 2014.

Joan Shea
Minister of Environment and Conservation

NOTICE

This area includes all lands in the Provincial Electoral District of Trinity North abutted and bounded as follows:

By a circle of 100 metres radius with its centre being the Local Service District's water supply # 3 Well, having UTM coordinates northing 5,331,214 metres and easting 280,350 metres.

All coordinates refer to Zone 22 of the NAD 83 Universal Transverse Mercator Projection.

©Queen's Printer



**NEWFOUNDLAND AND LABRADOR
REGULATION 15/14**

*Notice of Wellhead Protected Water Supply Area of the Local Service
District of Marysvale, Drilled Well, WS-G-0449
under the
Water Resources Act*

(Filed February 18, 2014)

Under the authority of section 61 of the *Water Resources Act*, I designate the area generally known as the *Wellhead Protected Water Supply Area, Drilled Well, WS-G-0449*, for the Local Service District of Marysvale as a wellhead protected water supply area.

Dated at St. John's, February 7, 2014.

Joan Shea
Minister of Environment and Conservation

NOTICE

This area includes all lands in the Provincial Electoral District of Harbour Main abutted and bounded as follows:

By a circle of 250 metres radius with its centre being the Local Service District of Marysvale water supply Drilled Well, having UTM coordinates northing 5,262,395 metres and easting 332,244 metres.

All coordinates refer to Zone 22 of the NAD 83 Universal Transverse Mercator Projection.

©Queen's Printer



**NEWFOUNDLAND AND LABRADOR
REGULATION 16/14**

*Repeal of Notice of Wellhead Protected Water Supply Area of the
Town of Millertown, Millertown Wellfield, WS-G-0864
under the
Water Resources Act*

(Filed February 18, 2014)

Under the authority of section 61 of the *Water Resources Act*, I
give the following notice.

Dated at St. John's, February 7, 2014.

Joan Shea
Minister of Environment and Conservation

NOTICE

***The Notice of Wellhead Protected Water Supply Area of the Town of
Millertown, Millertown Wellfield, WS-G-0864, Newfoundland and
Labrador Regulation 2/06, is repealed.***

©Queen's Printer



NEWFOUNDLAND AND LABRADOR REGULATION 17/14

Maritime Link Transmission Construction Special Project Order
under the
Labour Relations Act
(O.C. 2014-037)

(Filed February 20, 2014)

Under the authority of section 70 of the *Labour Relations Act*, the Lieutenant-Governor in Council makes the following Order.

Dated at St. John's, February 20, 2014.

Julia Mullaey
Clerk of the Executive Council

REGULATIONS

Analysis

- | | |
|---|------------------------------------|
| 1. Short title | 6. Collective agreement |
| 2. Definition | 7. Diversity plan |
| 3. Special project declared | 8. Hiring priority |
| 4. Scope of work and geographic site | 9. Labour Relations Agency liaison |
| 5. Parties who may bargain collectively | 10. Duration of order |

Short title **1.** This Order may be cited as the *Maritime Link Transmission Construction Special Project Order*.

Definition **2.** In this Order, "agreement" means the collective agreement dated January 28, 2013 and entered into between the Maritime Link (NL) Transmission Construction Employers' Association Inc., the International Brotherhood of Electrical Workers, and International Brotherhood of Electrical Workers, Local 1620.

Special project
declared

3. It is declared that the undertaking with respect to the construction of transmission, related infrastructure and related activities for the Maritime Link, more particularly described in Schedule A of the agreement, is a special project.

Scope of work and
geographic site

4. (1) The scope of work governed by this Order is described in Schedule A of the agreement.

(2) The geographic site governed by this Order is designated in Schedule B of the agreement.

Parties who may
bargain collectively

5. The parties that may be involved in collective bargaining in relation to employment on the special project are the Maritime Link (NL) Transmission Construction Employers' Association Inc., as the employers' organization acting for and on behalf of all contractors and subcontractors carrying out the work on the special project, and International Brotherhood of Electrical Workers and International Brotherhood of Electrical Workers, Local 1620, as the union acting for and on behalf of employees employed on the special project.

Collective
agreement

6. The agreement is the collective agreement for the purpose of the special project.

Diversity plan

7. This Order acknowledges the commitment contained in section 5.2 of the Maritime Link Transmission Project Industrial and Employment Benefits Agreement to implement and abide by a Diversity Plan approved by the Minister Responsible for the Status of Women.

Hiring priority

8. This Order acknowledges that the commitments respecting hiring priority contained in the Maritime Link Transmission Project Industrial and Employment Benefits Agreement have application to the special project.

Labour Relations
Agency liaison

9. This Order acknowledges the commitment of the parties to the agreement to liaise with a representative of the Labour Relations Agency on labour relations matters relating to the special project.

Duration of order

10. This order remains in effect for the duration of the work, including mobilization and demobilization by the contractors, or as otherwise provided in the agreement.

©Queen's Printer

Index

PART I

Highway Traffic Act – Notice	41
Lands Act – Notices.....	45
Mechanics’ Lien Act – Notice	44
Mineral – Notice	42
Quieting of Titles Act – Notice.....	46
Trustee Act – Notices	49
Urban and Rural Planning Act, 2000 – Notices	44

PART II

CONTINUING INDEX OF SUBORDINATE LEGISLATION

Title of Act and Subordinate Legislation made thereunder	CNLR or NL Reg.	Amendment	NL Gazette Date & Page No.
Labour Relations Act			
Maritime Link Transmission Construction Special Project Order	NLR 17/14	New Extraordinary Gazette Feb 20/14	Feb 21/14 p. 67
Water Resources Act			
Notice of Wellhead Protected Water Supply Area of the Local Service District of Deep Bight, Number 1 Well, WS – G-0213	NLR 12/14	New	Feb.21/14 p. 57
Notice of Wellhead Protected Water Supply Area of the Local Service District of Deep Bight, Number 2 Well, WS – G-0213	NLR 13/14	New	Feb.21/14 p. 59
Notice of Wellhead Protected Water Supply Area of the Local Service District of Deep Bight, Number 3 Well, WS – G-0213	NLR 14/14	New	Feb.21/14 p. 61

Title of Act and Subordinate Legislation made thereunder	CNLR or NL Reg.	Amendment	NL Gazette Date & Page No.
Notice of Wellhead Protected Water Supply Area of the Local Service District of Marysvale, Drilled Well, WS – G-0449	NLR 15/14	New	Feb.21/14 p. 63
Repeal of Notice of Wellhead Protected Water Supply Area of the Town of Millertown, Millertown Wellfield, WS – G-0864	NLR 16/14	New	Feb.21/14 p. 65

The Newfoundland and Labrador Gazette is published from the Office of the Queen's Printer.

Copy for publication must be received by **Friday, 4:30 p.m.**, seven days before publication date to ensure inclusion in next issue.

Advertisements must be submitted in either PDF format or as a MSWord file. When this is not possible, advertisements must be either typewritten or printed legibly, separate from covering letter. Number of insertions required must be stated and the names of all signing officers typewritten or printed.

Copy may be mailed to the address below, faxed to (709) 729-1900 or emailed to queensprinter@gov.nl.ca.

Advertising rates are available upon request. Subscription rate for *The Newfoundland and Labrador Gazette* is \$125.00 for 52 weeks plus applicable tax (\$131.25). Weekly issues of \$3.00 per copy, plus tax payable in advance.

All cheques, money orders, etc., should be made payable to THE NEWFOUNDLAND EXCHEQUER ACCOUNT and all correspondence should be addressed to: Office of the Queen's Printer, P. O. Box 8700, Ground Floor, East Block, Confederation Building, St. John's, NL A1B 4J6. Telephone (709) 729-3649. Fax: (709) 729-1900.

Web Site: <http://www.servicenl.gov.nl.ca/printer/index.html>

**Place your order by contacting:
Office of the Queen's Printer
Confederation Building, East Block
St. John's, NL A1B 4J6
Telephone: (709) 729-3649 Fax: (709) 729-1900
email: queensprinter@gov.nl.ca**

**Government Information Product
Publication Rate Mail
G.S.T. # R107442683**

All requests for Subscription and Legislation MUST be prepaid.